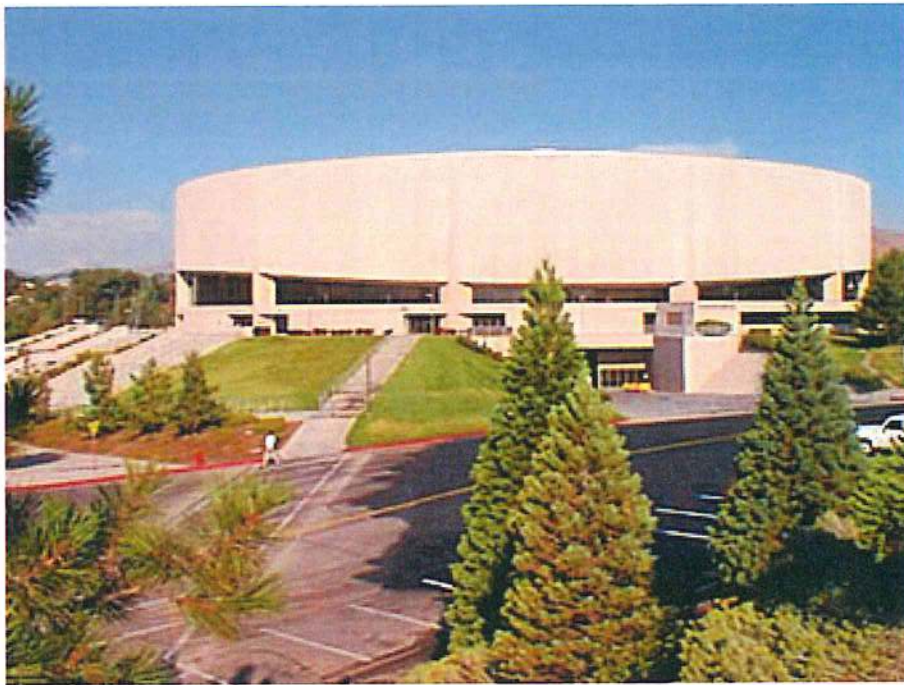


# LAWLOR EVENTS CENTER



# LAWLOR EVENTS CENTER

## PROMOTER PACKET

### A. FACILITY HIGHLIGHTS

- 12,000 seat multipurpose arena, home to top-ranked Nevada Wolf Pack basketball
- Largest venue in Northern Nevada
- Visually striking facility on the beautiful University of Nevada campus located next to Mackay Stadium, the Joe Crowley Student Union, and academic buildings within walking distance to downtown Reno
- Arena offers excellent sightlines for all seats in all areas
- In-house full-service catering and beverage service
- Highly trained Event Services staff dedicated to providing a memorable and safe experience for all guests.
- In-house sales department for event promotion and ticket sales
- President's Room (2,400 square feet) and Silver and Blue Ballroom (6,750 square feet), fully carpeted meeting rooms which can be configured into 1 - 4 rooms. These areas can be used for VIP hospitality rooms, production offices, and overflow offices.
- A Daktronics marquee (DVX-500-16MT-HC-176x330) is on the corner of North Virginia and 15<sup>th</sup> Street (right in front of the Lawlor Events Center). Promotional graphics are sized 1280 x 720 pixels
- Located adjacent to two large level paved parking complexes with dedicated handicapped parking spaces

### B. DIMENSIONS

- Facility covers 201,400 square feet.
- Main floor area measures 74'x184' with a 62-foot-high ceiling.
- Concourse provides 24,300 square feet of space for crowd movement and exhibits.

### C. LOADING AREA

- Sloping ramp leads to a single roll up door that is large enough to accommodate a single semi-trailer.
- Tunnel into the building allows for a single semi-truck to back up to the arena floor.
- No loading docks. All gear must be fork lifted or ramped off of the truck.

### D. RIGGING

- 72' x 160' grid - dead hang points on saddles
- 78' from floor
- Low Steel points radiate from center cluster at 64' to outside walls at 76'
- 2000 lbs. per point
- Center hung scoreboard - 35' x 35'
- Trims at 48'

### E. STAGING

- Stage Right with 117 decks (8' x 4')
- 4 Sets of Stairs
- "H" frames (40), adjustable from 4' – 6'

- Stage Railings: (18) 8' open, (4) 4' open, (3) 8' closed, (6) 4' closed
- Misc. FOH / drum risers
- 2 ADA handicap ramps
- 1 handicap lift to 4'

## F. BARRICADES

- Blow Through Barricade: 12 pieces at 6' each
- Bicycle Barricade: 60 pieces at 8' each
- Stanchions: 180 pieces

## G. SHOW VEHICLE PARKING

- All show and production parking will be advanced with Lawlor Events Center coordinators
- Show parking needs will be coordinated between Lawlor Events Center and University Parking Services for space suitable on campus

## H. ELECTRICAL

### **Building Power Tie in - Cam Locks**

- 1 x 800 Amp/3 Phase at stage left
- 2 x 400 Amp/3 Phase stage left and right
- 1 x 200 Amp/3 Phase at stage left
- 1 x 50 Amp at stage right

### **Loading Ramp**

- 2 x 200 Amp/3 Phase at stage right

## I. DRESSING ROOMS

- 2 Star
- 2 Support Act
- 2 Small / Individual

All dressing rooms have separate restroom facilities

## J. CURTAINS & DRAPES:

- Blue Pipe & Drape (200')
- Black Pipe & Drape (100')
- Black Velour Curtains (8) 30'h x 20'w and (2) 30'h x 10'w

## K. PRODUCTION LIGHTING

- Spotlights: (2) Xenon Super Trouper 2

## L. COMMUNICATIONS

- In house intercom system (Clear Com)

## M. MEETING ROOMS

- Florescent and dimmable incandescent lighting
- AV / Staging / Chair / Table packages available
- In Room PA / Inputs around entire room
  - Can be configured into 1 - 4 rooms

### SILVER & BLUE \*

- 200 Amp, 208V/120V 3 phase available
- In ceiling projection screen
  - A - 63' x 37'
  - B - 56' x 32'
  - C - 38' x 33'
  - D - 43' x 32'

#### Seating Style

#### Capacity of one room configuration

- Theater: 500
- 5' Rounds of 8: 400
- Classroom: 300

### PRESIDENT'S \*

- #1. 33' x 20'
- #2. 33' x 20'
- #3. 33' x 20'
- #4. 33' x 13'

#### Seating Style

#### Capacity of one room configuration

- Theater: 200
- 5' Rounds of 8: 200
- Classroom: 125

\*Dimensions and seating capacity for meeting rooms are approximate

## O. OTHER EVENT SERVICES

- Catering and Concessions: Sodexo
- Ticketing System: TicketsWest (using the Paciolan ticketing platform)
- Stage Labor: IATSE and In-House
- Security: CSC
- Guest Services: In-House

### Individual Dressing Room #1

#1 on attached map

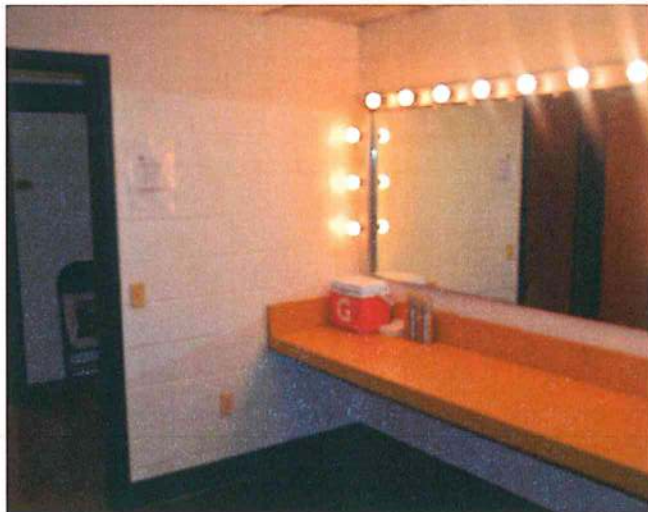
9' x 8' (72 sf) not including bathroom/shower



### Individual Dressing Room #2

#2 on attached map

11' x 11' (121 sf) not including bathroom/shower



## Group Dressing Room #1

#3 on attached map

14' x 18' (252 sf) not including  
bathroom/showers



## Group Dressing Room #2

#4 on attached map

14' x 16' (224 sf) not including  
bathroom/showers



## Multi-use Room

#5 on attached map

24' x 15' (360 sf)



## Silver and Blue Room

A

#6 on attached map

63' x 37' (2,331 sf)



## Silver and Blue Room B

#7 on attached map  
56' x 32' (1,792 sf)



## Silver and Blue Room C

#8 on attached map  
38' x 33' (1,254 sf)





## Silver and Blue Room D

#9 on attached map  
43' x 32' (1,376 sf)



## President's Room #1

#10 on attached map  
33' x 20' (660 sf)



## President's Room #2

#11 on attached map

33' x 20' (660 sf)



## President's Room #3

#12 on attached map

33' x 20' (660 sf)



## President's Room #4

#13 on attached map

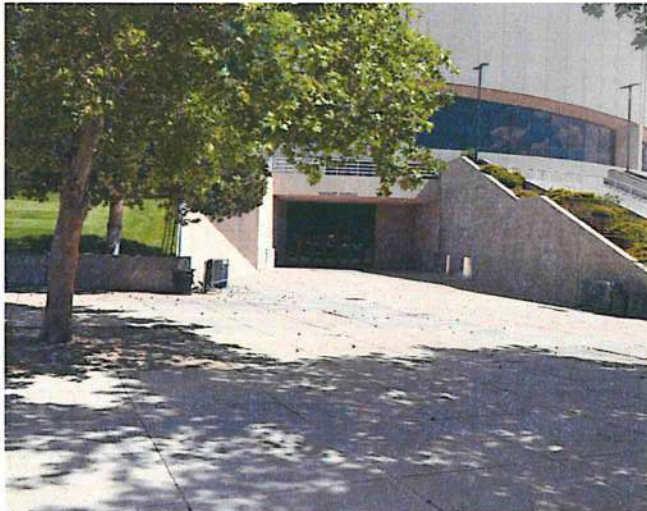
33' x 13' (429 sf)

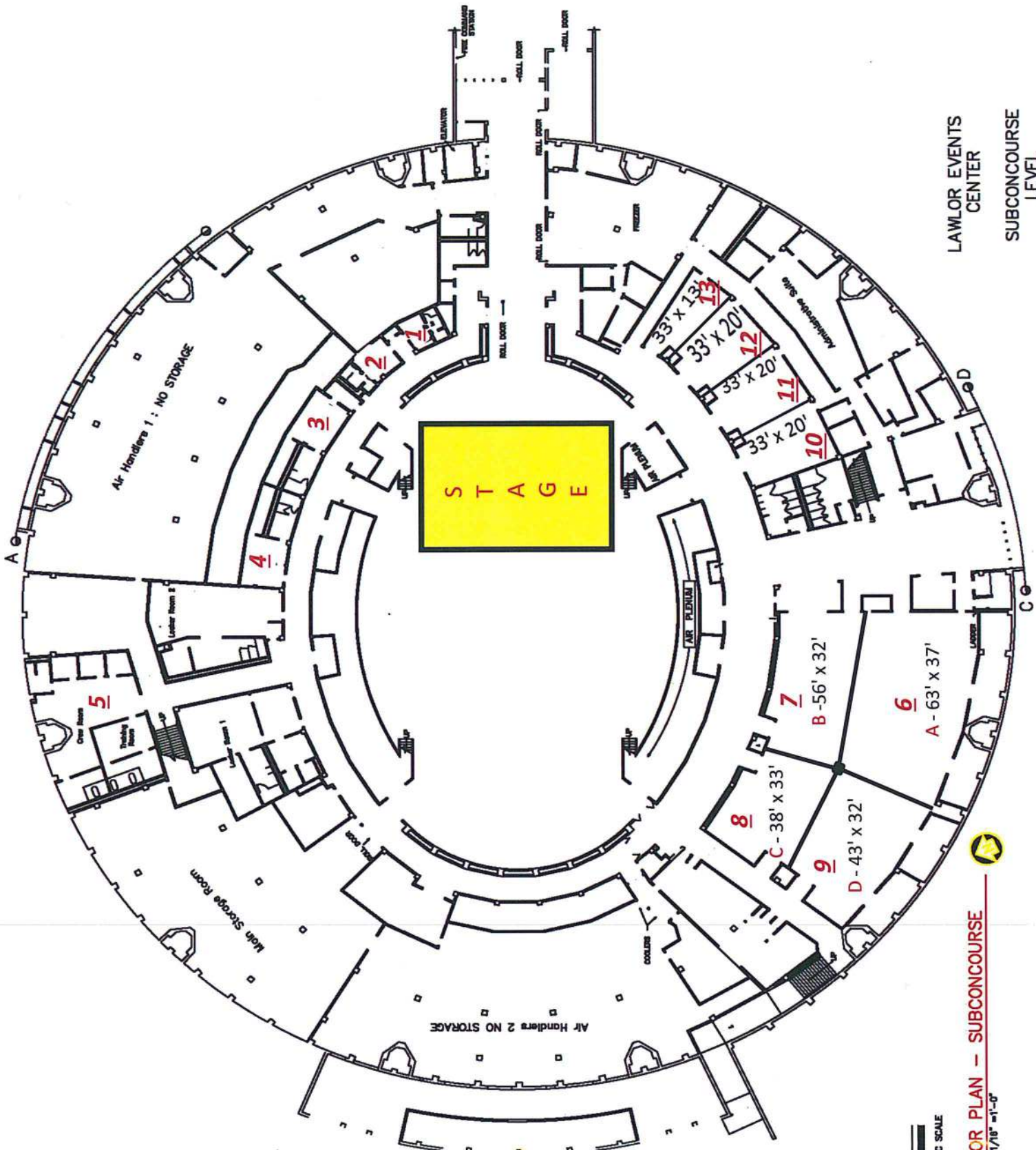


## South Lobby Entrance

Located next to Silver and Blue Room A

May be used to expedite Loading and Unloading of equipment onto trucks





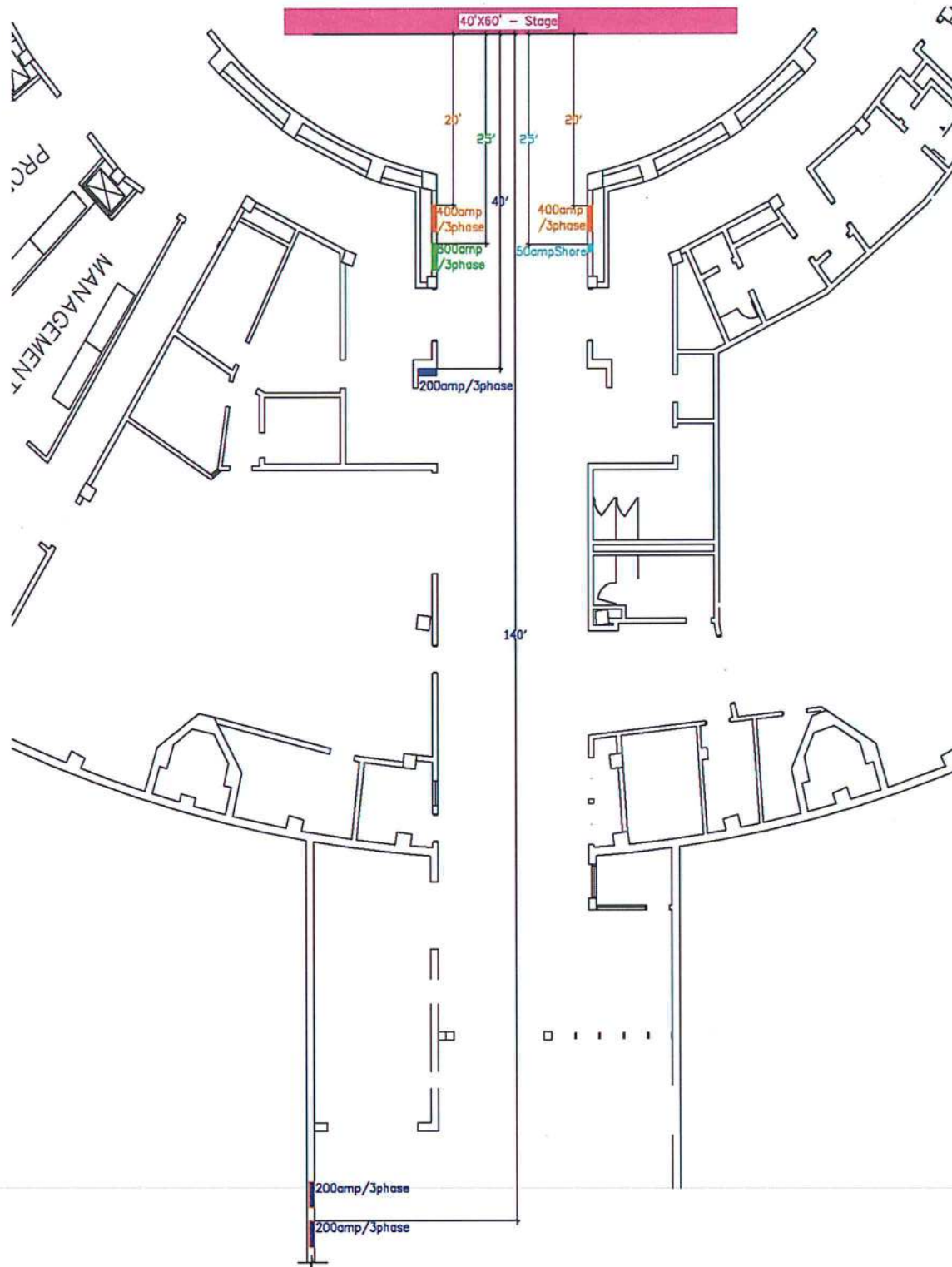
LAWLOR EVENTS  
CENTER  
SUBCONCOURSE  
LEVEL

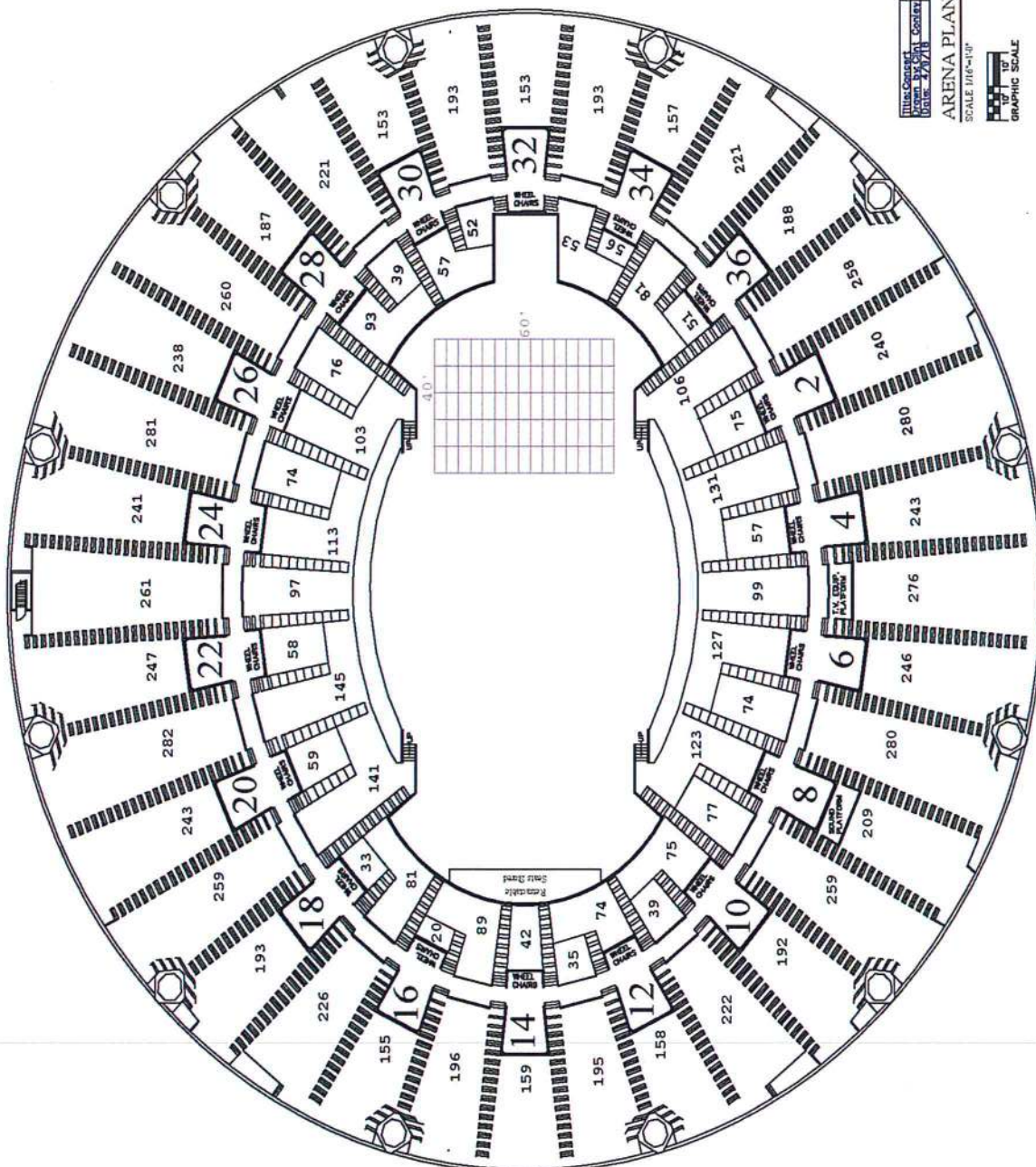


**FLOOR PLAN — SUBCONCOURSE**

SCALE 1/16" = 1'-0"








  
 THE UNIVERSITY OF NEVADA, RENO

ARENA PLAN

SCALE 1/8" = 1'-0"

