



EagleBank Arena
Fairfax, Virginia
Technical Rider

UPDATED 04/2023

TABLE OF CONTENTS

EagleBank Arena Contacts	Page 2
Directions, Loading Area, Parking	Page 3
In-House Labor	Page 5
Dimensions & Staging	Page 5
Rigging	Page 9
Lighting & Electric	Page 15
Audio & Video	Page 17
Dressing Rooms	Page 18
Hospitality Room	Page 19
Security & Medical	Page 20
Local Vendors	Page 21

CONTACTS AT EAGLEBANK ARENA

Monumental Sports & Entertainment provides management for George Mason University's EagleBank Arena.

<p>GENERAL MANAGER & BOOKING, Eric Cuthbertson ecuthber@gmu.edu 703-993-3009</p>	<p>BUILDING ENGINEER & ELECTRICIAN, Charles Shelby cshelby2@gmu.edu 703-993-3023</p>
<p>■ DIRECTOR OF EVENTS, Kevin Fitzpatrick kfitzpa8@gmu.edu 703-993-3008</p>	<p>SENIOR DIRECTOR, BOX OFFICE, Mandi Greene mgreene2@gmu.edu 703-993-3012</p>
<p>■ ASSISTANT MANAGER, EVENTS, Ambrozzine “Bam” Ayers aayers4@gmu.edu 703-993-3055</p>	<p>ASSISTANT MANAGER, BOX OFFICE, 703-993-3543</p>
<p>■ ASSISTANT MANAGER, EVENTS, Ethan Harker eharker@gmu.edu 703-993-3029</p>	<p>MANAGER, ARENA MARKETING, Erin Mitchell Martin emartin@monumentalsports.com 202-527-7510</p>
<p>SENIOR DIRECTOR, OPERATIONS, Tim Todd ttodd5@gmu.edu 703-993-3014</p>	<p>ASSISTANT MANAGER, OPERATIONS, Dani Vera dvera1@gmu.edu 703-993-3062</p>
<p>CONCESSIONS MANAGER, Jehovanny Aviles-Mejia Jehovanny.Aviles-Mejia@sodexo.com 703-993-3059</p>	<p>MERCHANDISE MANAGER, Harry Block HBI711@verizon.net 301-261-3046</p>

■ *Production advance contacts*

MAILING ADDRESS

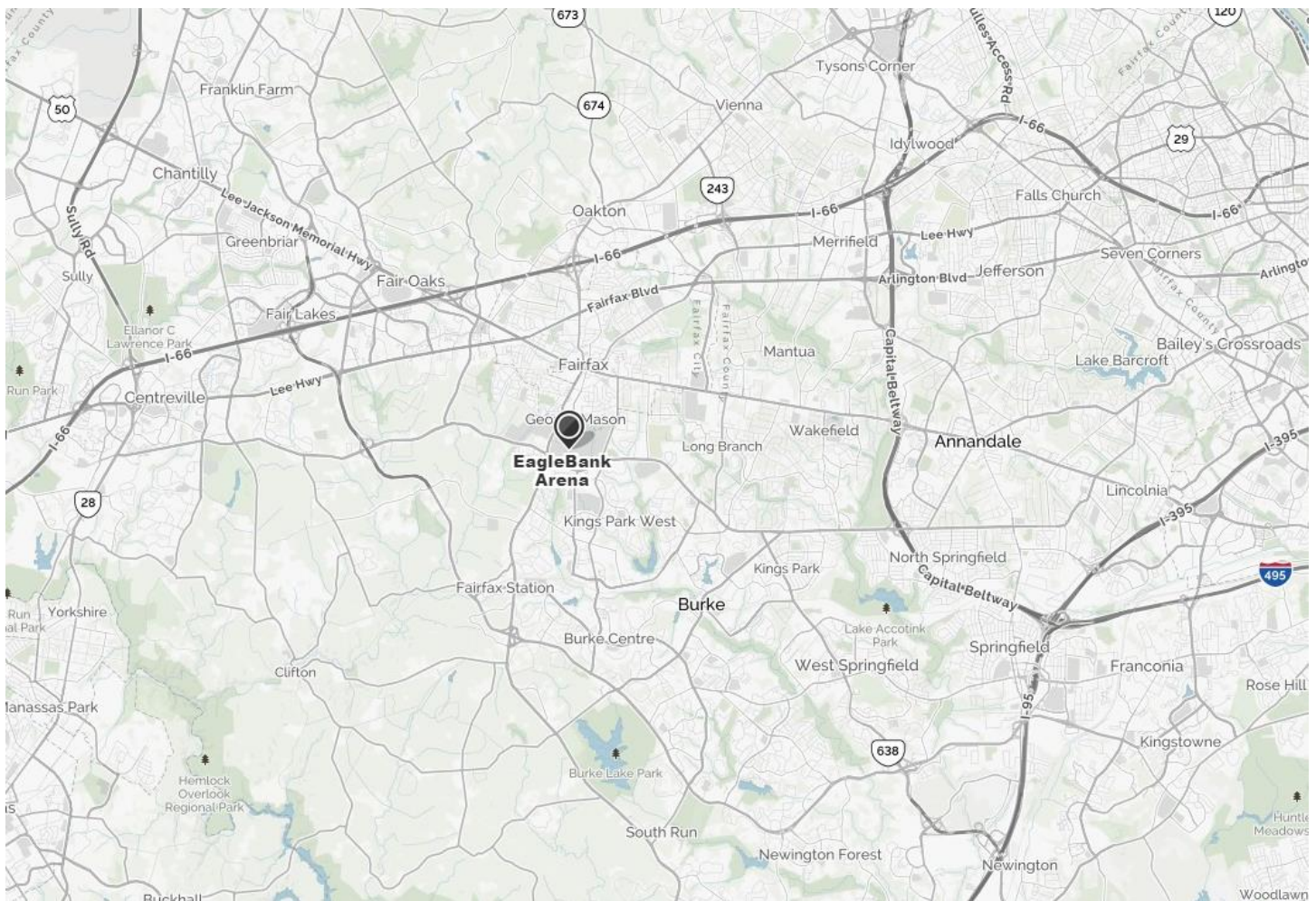
EagleBank Arena
 4400 University Drive - MSN 2C8
 Fairfax, VA 22030

DIRECTIONS, LOADING AREA, PARKING

From I-95 North and the Beltway (I-495): Take Exit 4 onto I-495 west to Fairfax. Get off at Exit 54A (Braddock Road West), go six miles and turn right on Roanoke Lane into the George Mason University campus. EagleBank Arena is the first building on the right.

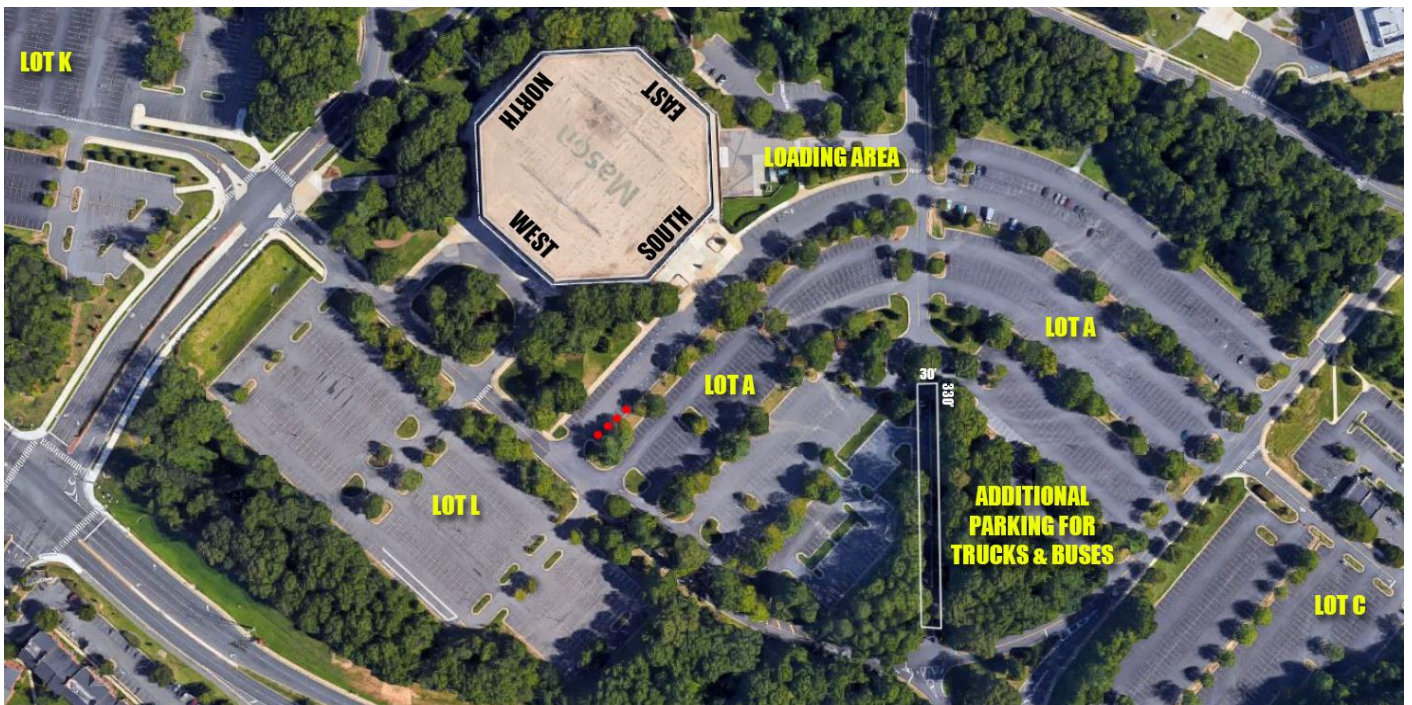
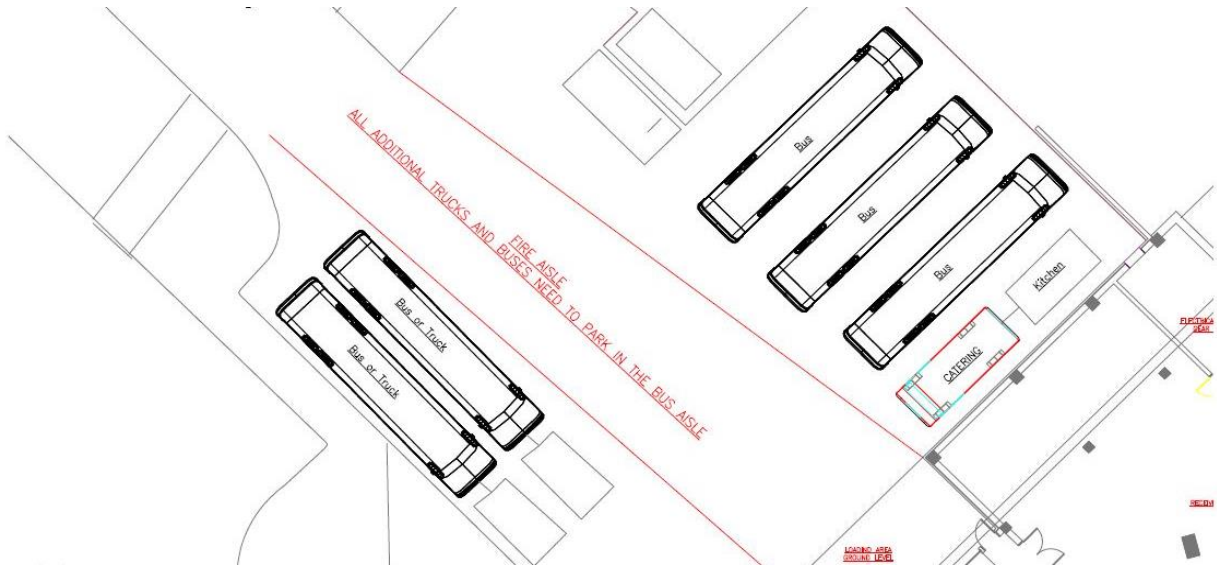
From I-95 South and the Beltway (I-495): Take Exit 27 onto I-495 west to Fairfax. Get off at Exit 49W (I-66 West) and go five miles to Exit 60 (123 South). Take Route 123 south three miles through Fairfax city to Braddock Road. Turn left onto Braddock Road. Go one block and turn left onto Roanoke Lane. EagleBank Arena is the first building on the right.

GPS Address: 4500 Patriot Circle, Fairfax, VA 22030



DIRECTIONS, LOADING AREA, PARKING

The loading area is located on the lower East side of the building and is large enough to accommodate the loading of two trailers at one time. There is no loading dock. The loading door is approximately 14' wide x 12' high, and located 35' from the arena floor. Shore power is available for four buses in the loading area. All other vehicles must be parked out of the loading area in a specified location (30' x 330') approximately 150 yards from the building.



IN-HOUSE LABOR

EagleBank Arena stagehands and wardrobe personnel are a mix of professional stagehands and students drawn from the Washington, DC area and George Mason University. EagleBank Arena is a non-union facility.

House stagehands have a minimum of 4-hours for the first call of the day and 3-hours for every call thereafter. They will receive time and one half after 8 hours, excluding the show calls. They will receive time and one half on any company recognized holiday.

DIMENSIONS & STAGING

Arena floor is 200' x 85' wall to wall.

Sample set up diagrams are available on the next three pages.

Venue has StageRight staging consisting ME3750 units (20) and 4x8 decks (108) with tech stage/gray carpet surfaces. Minimum 48" to maximum 78" stage height. Staging rolls and can be placed after rigging. Maximum stage size (including sound wings) is 72' wide by 48' deep. There must be at least 6' fire aisles on either side of the stage.

STAGE STEPS

There are two sets of matching StageRight stage stairs available:

There are also two sets of 4' x 4' wooden steps available. These two sets are masked on one side only and can be assembled to be 8' wide.

MASKING CURTAINS & SKIRTING

EagleBank Arena has black masking curtains that range from 25'-40' tall, which can be used to mask behind the stage and up into the seating areas or to mask from the front of the stage up into the seating area. The use of these curtains must be requested in advance as there is an additional rental fee.

Black velveteen stage skirting is available and adjustable from 4' – 7' in length.

STAGE RAILING

150' of railing for the stage is available in 4' and 8' sections.

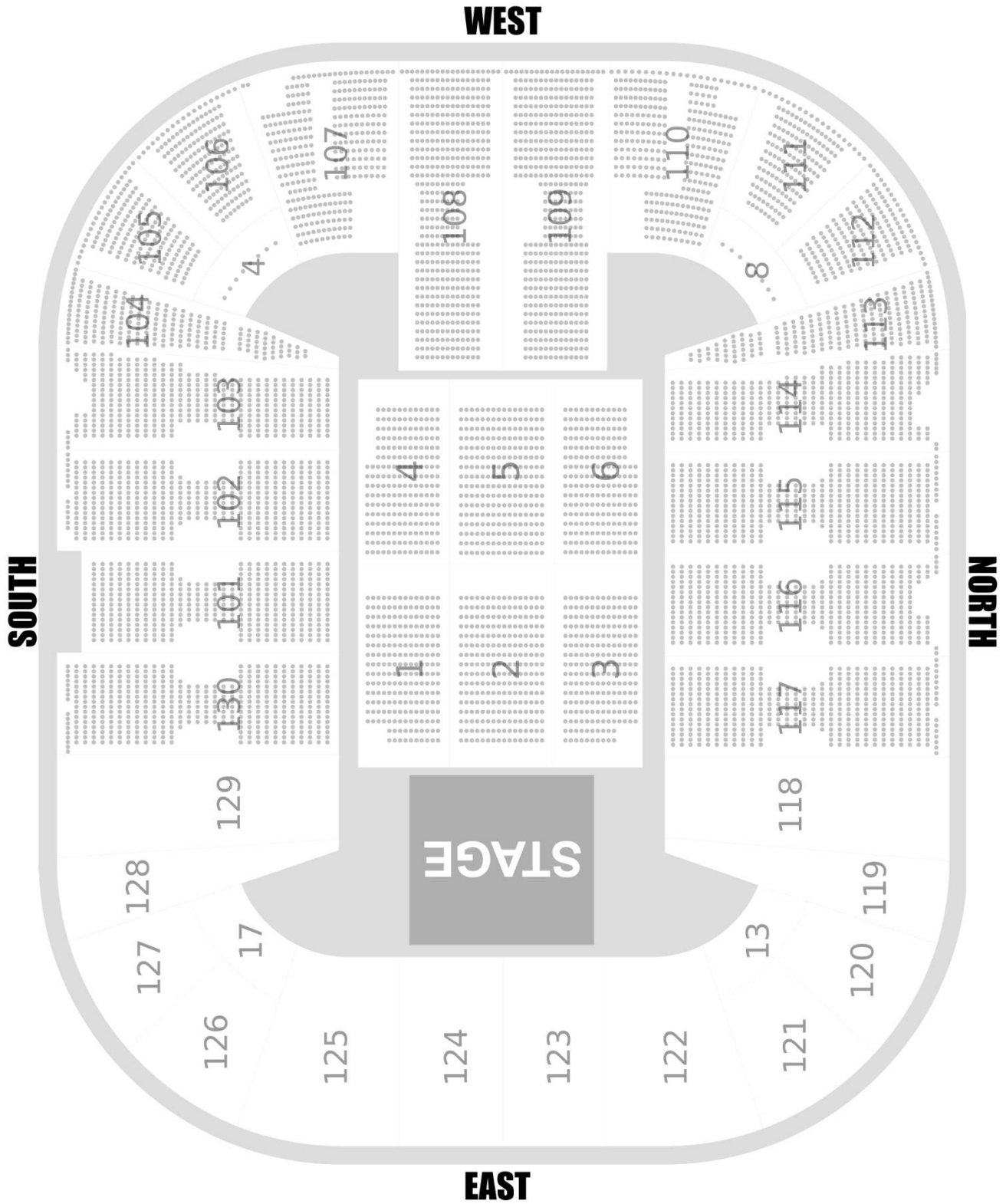
BARRICADE

160' of free-standing barricade is available upon request. It is 4' StageRight perforated front barricade with 4' floor plates.

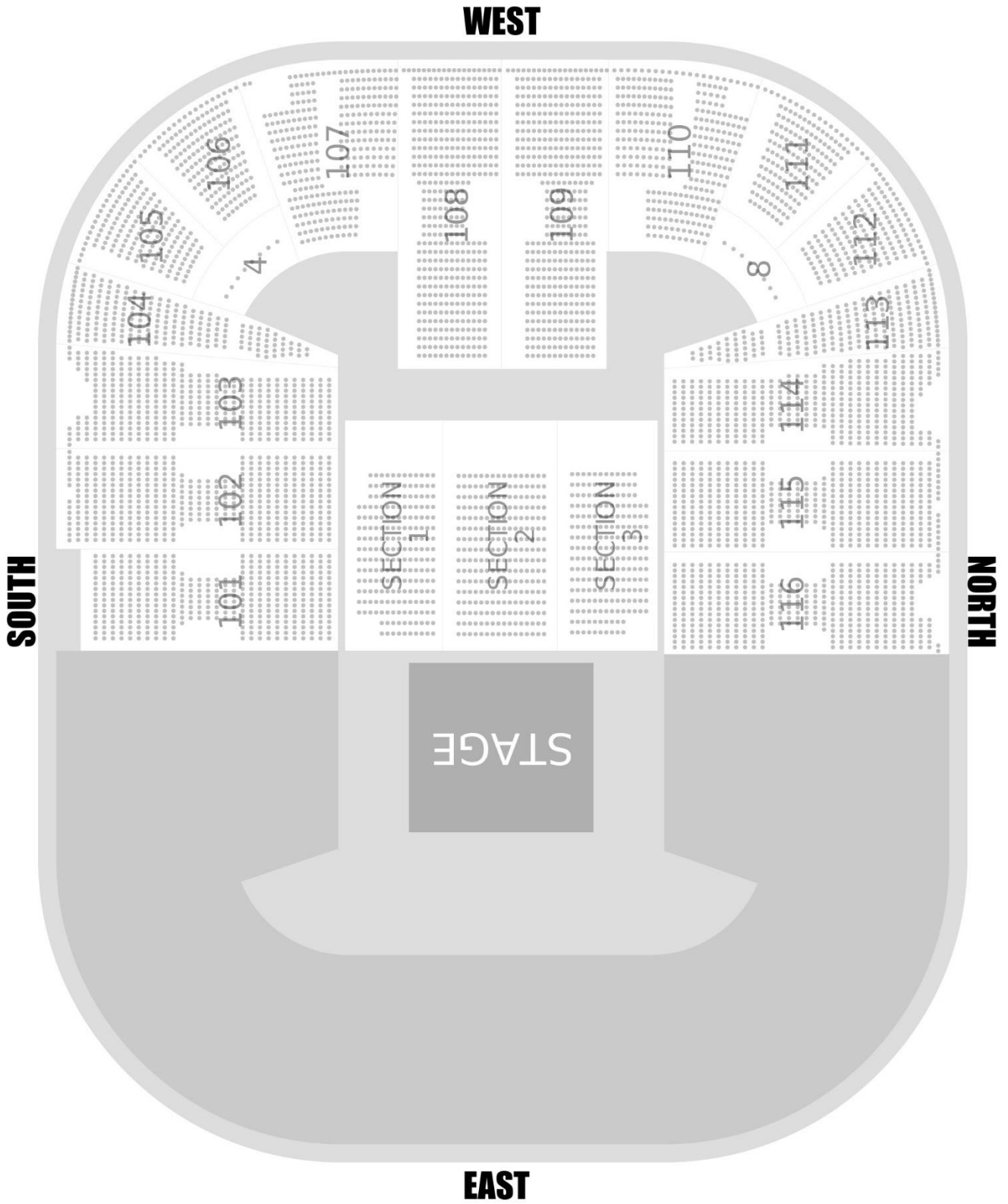
FORKLIFT

1 Hyundai 2530L-7A 6,000 lb. capacity forklift with 7' fork extensions is available. The fork blades are 4" wide and the extensions are 7" wide. This must be operated by a licensed member of EagleBank Arena staff.

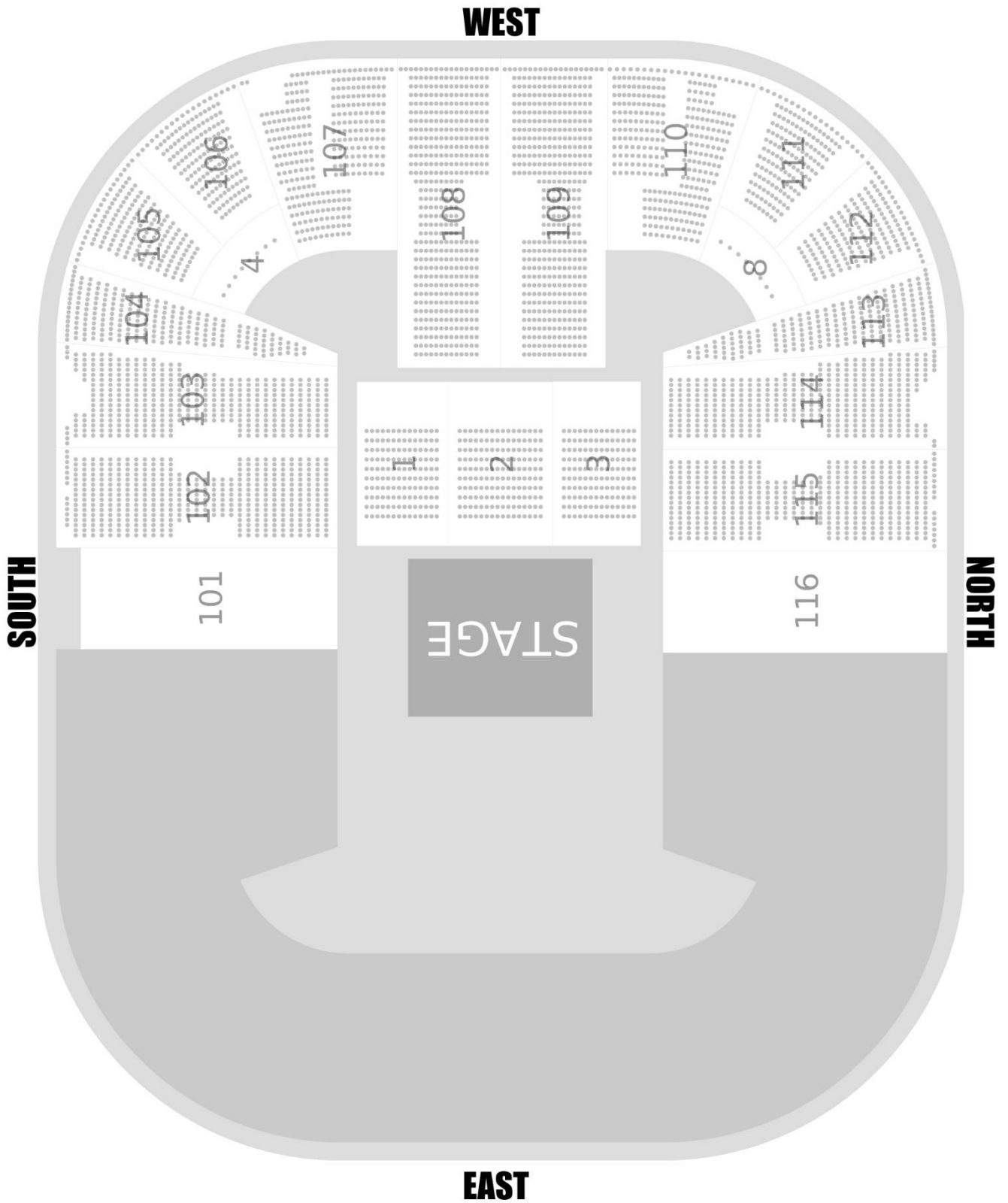
END STAGE SET UP



HALF HOUSE SET UP



SHOWCASE SET UP



RIGGING

The structural engineers have provided the following guidelines for concert/show rigging at EagleBank Arena and all rigging must conform to these limitations. Please make a note of them and plan the rigging of your show accordingly. EagleBank Arena is a difficult venue in which to rig, unless your show is a very simple one, we suggest that you set your rigging call one hour earlier than usual or plan for the number of riggers as suggested by the Director of Operations once he has received your rigging plot.

All loads must be hung from the bottom chord (steel) of the trusses. This means no rigging from the high steel in the ceiling. No baskets may be made around any vertical member. All loads must be hung only from the panel points of a truss and attached at the gusset plate. All loads hung between the trusses must be bridled only from panel point to panel point. No exceptions.

Rigging cables must be secured to the bottom chord of the trusses at either end of the gusset plate at the panel points.

For the T-4 trusses see diagram RG1 for loads and formula.

On the T-1 and T-2 trusses one load not to exceed 1,000 lbs. may be dead hung from any point between panel points on the bottom chord. What this means is that there are very specific points at which the rigging cables must be attached. These restrictions force us to bridle most of our points and makes moving points short distances difficult.

MEASUREMENTS

The measurements from the arena floor to the bottom chord (steel) of the trusses are as follows:

T-1 & T-2 Trusses	60'
T-3 Trusses	70'

WEIGHT LIMITATIONS

T-1 Trusses: 10,000 lb. per panel point not to exceed a total of 30,000 lb. per truss.

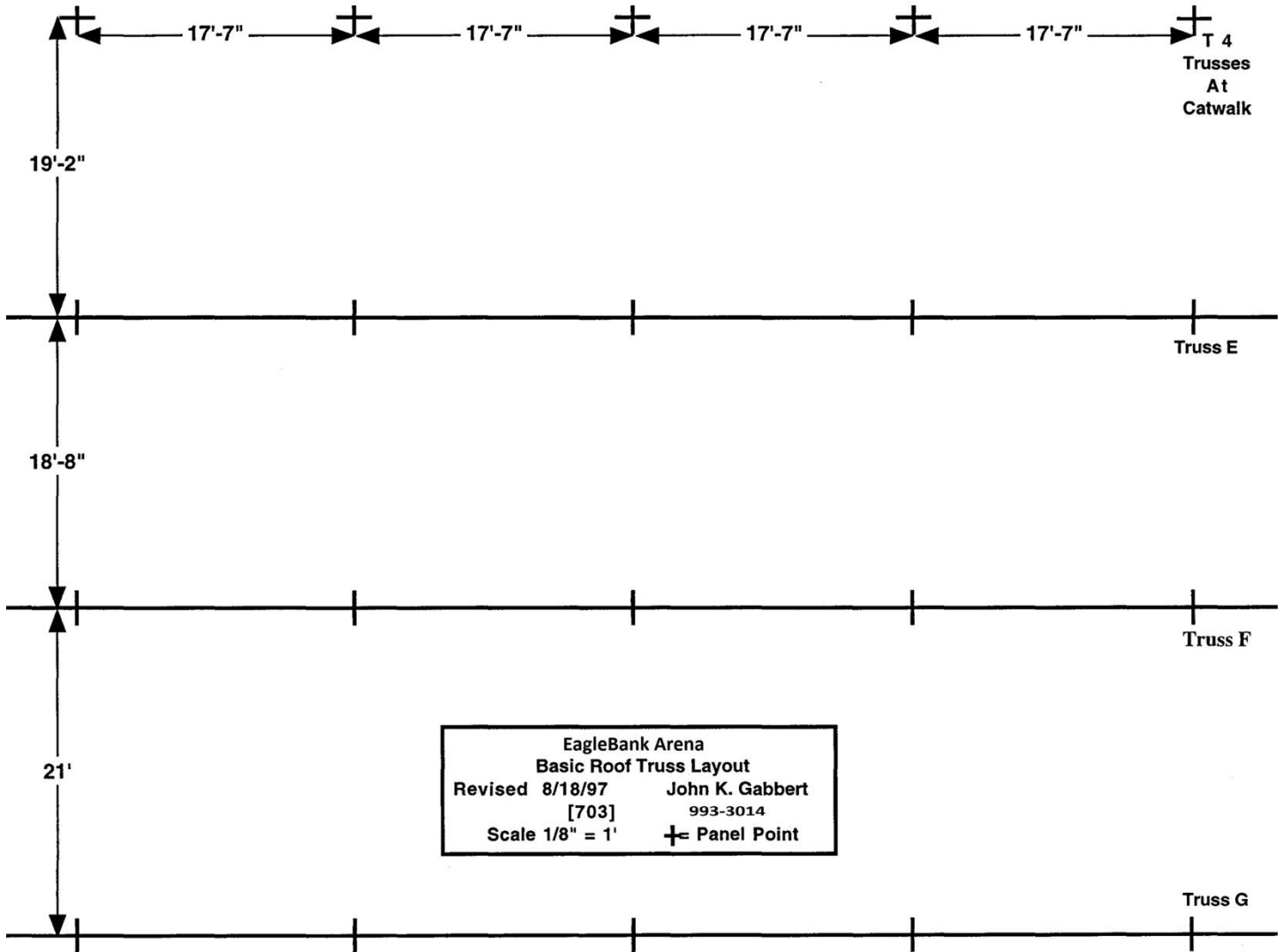
T-2 Trusses: 6,000 lb. per panel point not to exceed a total of 18,000 lb. per truss. There are points at the scoreboard location which are rated less and are noted on the drawing of the full arena.

OBSTRUCTIONS

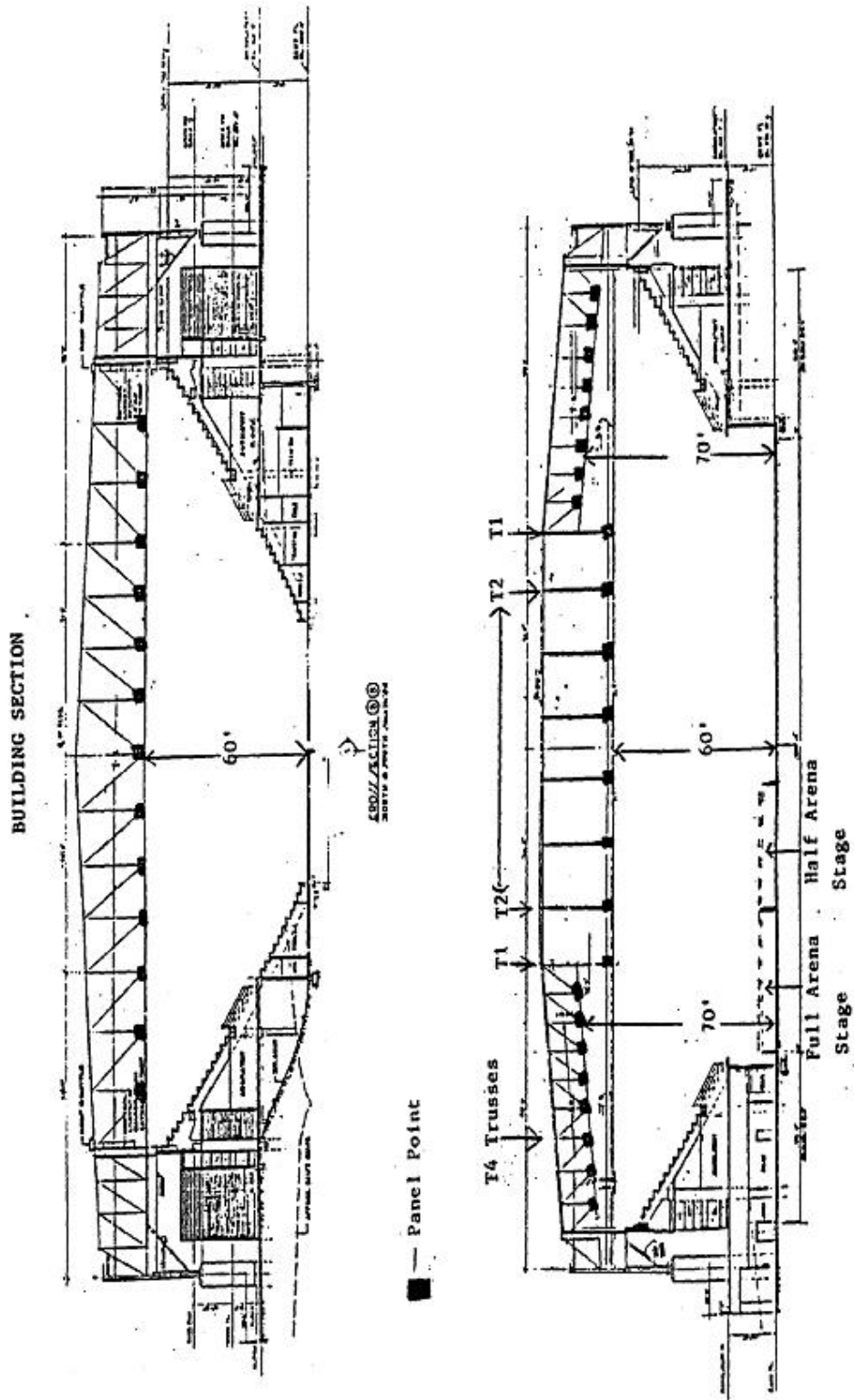
Be advised that for a half house or showcase set-up the center-hung scoreboard, which trims at 46', may sometimes require adjustments to the show rigging.

These guidelines and weight limitations are presented to you in advance so we can work on any problems that your show may have in rigging at EagleBank Arena. We realize that the proscribed rigging methods may require additional riggers and time, all of which will be made available to you upon request. What we ask in return is that you provide us with a current rigging plot far enough in advance that we can see what solutions can be worked out in order to safely and efficiently rig your show.

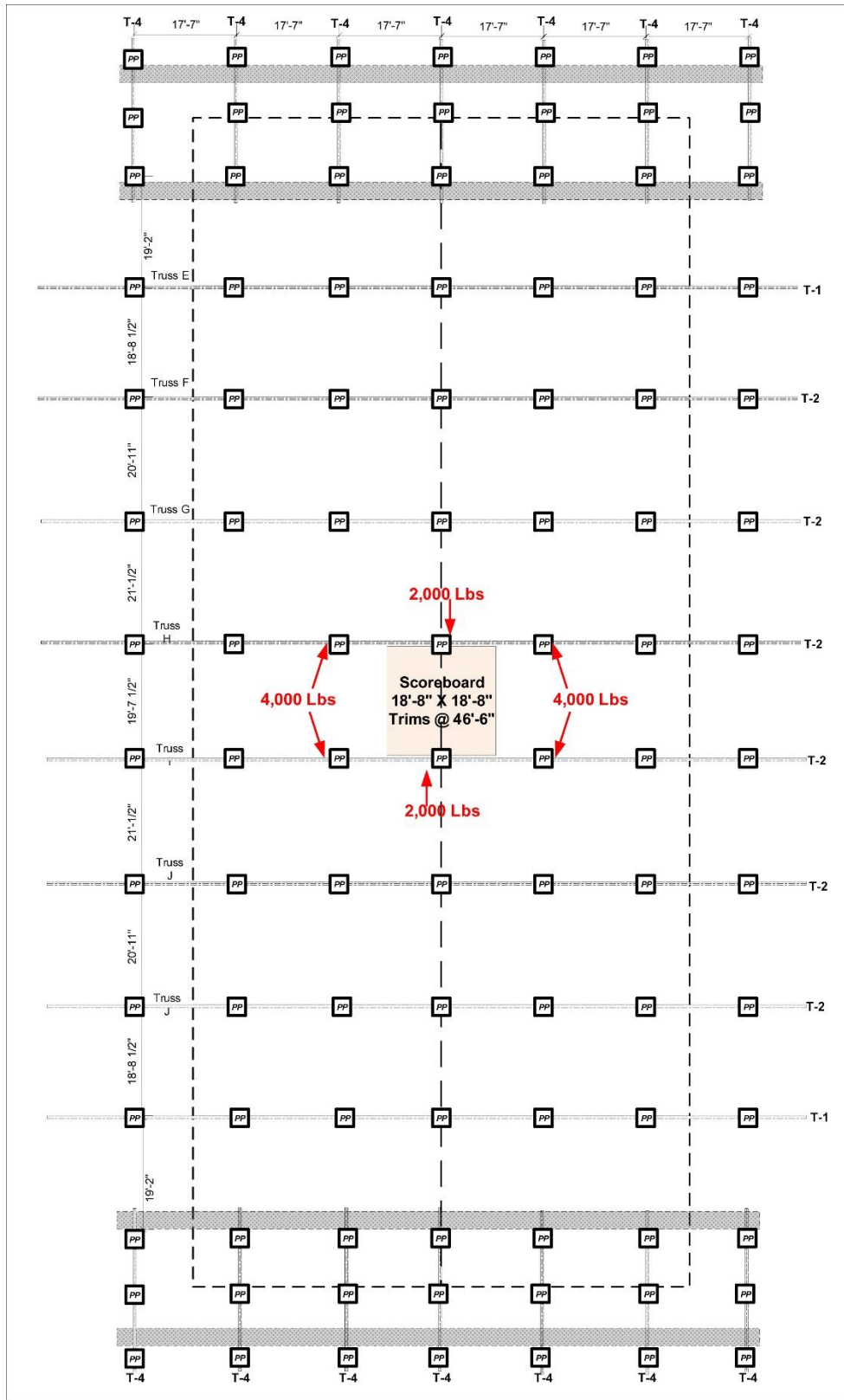
BASIC ROOF TRUSS LAYOUT



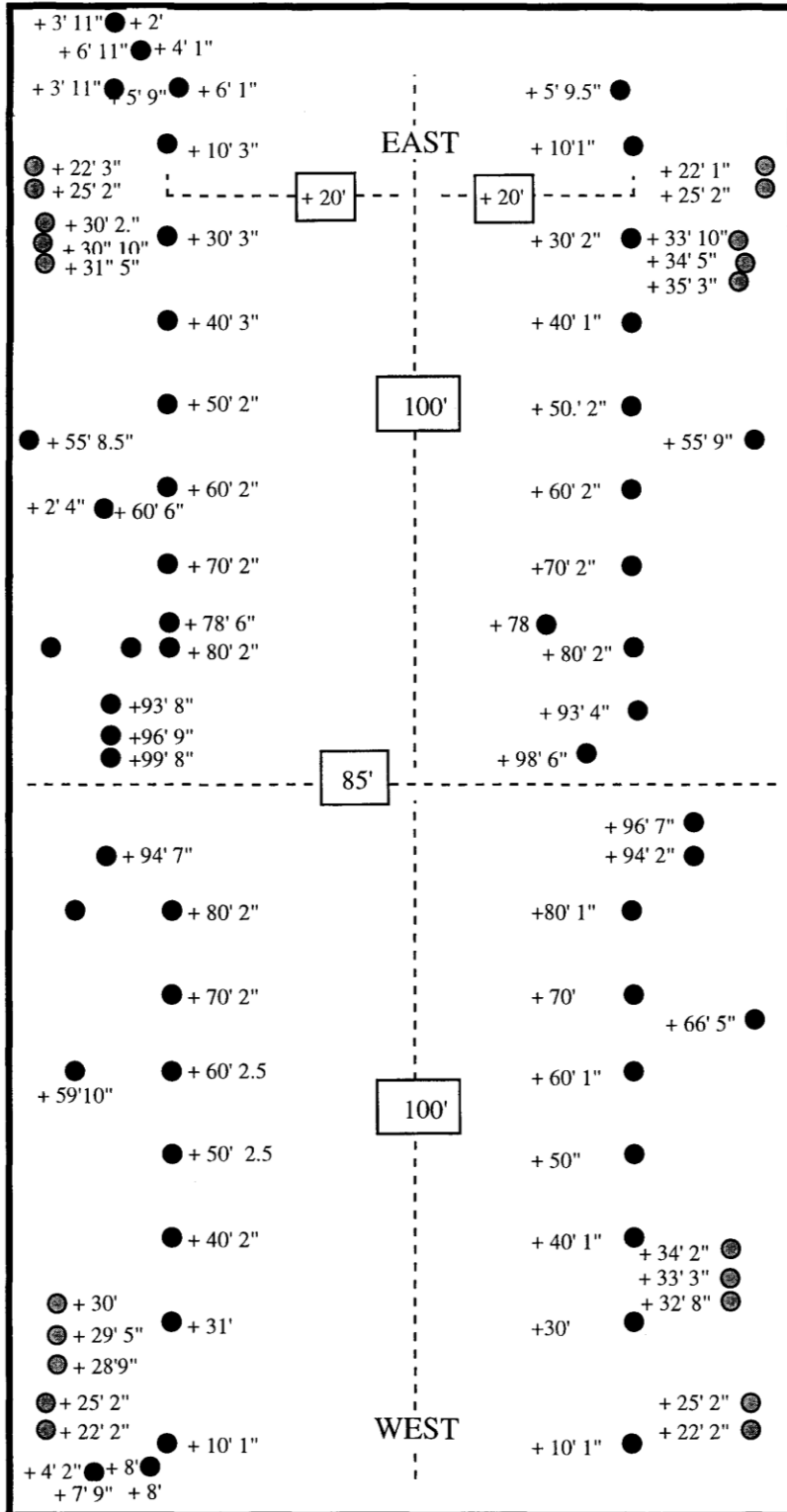
BUILDING SECTION DIAGRAM



RIGGING OVERVIEW DIAGRAM



FLOOR ANCHORS



NOTES

THE FLOOR ANCHORS ARE A COMBINATION OF HILTI ADHESIVE ANCHORS SET TO A DEPTH OF 5", AND RED HEAD EXPANSION BOLTS.

BOTH ARE RATED AT 3,000 LBS VERTICAL PULL. THE ARENA HAS 1/2" EYE BOLTS, WITH SHOULDERS, RATED AT 10,000 LBS SHEAR FOR EACH HOLE.

ADDITIONALLY THE ARENA HAS PLATES CUT TO FIT THE HOUSE LEFT HIGH WIRE ANCHOR HOLES. THE PLATES ARE DESIGNED TO DISTRIBUTE THE TENSION OF THE HIGH WIRE OVER ALL THREE HOLES.

FOR FURTHER INFORMATION PLEASE CONTACT:

JOHN K. GABBERT,
DIRECTOR OF OPERATIONS
[703] 993-3014

CHARLES SHELBY
BUILDING ENGINEER
[703] 993-3023

KEY



HIGH WIRE ACTS



TRAPEEZE & NETS

LIGHTING & ELECTRIC

ELECTRICAL POWER

6 – 400 AMP 3 Phase 120/208 Volt Disconnect
2 – 200 AMP 3 Phase 120/208 Volt Disconnect

One electrical disconnect is located near the loading entrance. Electrical disconnects are located: three 400-amp services and one 200-amp service stage left and three 400-amp services and one 200-amp service stage right approximately 65' from stage center when the arena is set up for an end stage concert. When the arena is set up for a "half house" concert the disconnects are approximately 85' from upstage center.

Power distribution for conventions, trade shows, and exhibitions on the arena floor and concourse level is available by prior arrangement, and may be subject to additional costs.

HOUSE LIGHTS

The house lights are controlled from two locations. For concerts the house lights will be controlled from backstage on the stage left side. For sporting events the house lights will be controlled from the control booth in section 101. Both locations have headset stations.

FOLLOW SPOTS

6 – 2,500-watt Robert Juliat, Merlin follow spots are available. The follow spots are permanently mounted in sections 101, 103, 107, 110, 114, and 116. The follow spot diagram is located on the next page.

PYROTECHNICS

A permit for use of any pyrotechnics or flame effects is required and must be obtained through the Virginia State Fire Marshal's Office (SFMO). All permit applications should be submitted to the SFMO at least 10 working days prior to the event. The venue should also receive copies of the pyro rider and technician's certification. SFMO requires that the technician be licensed in VA or that a local shooter be utilized as well.

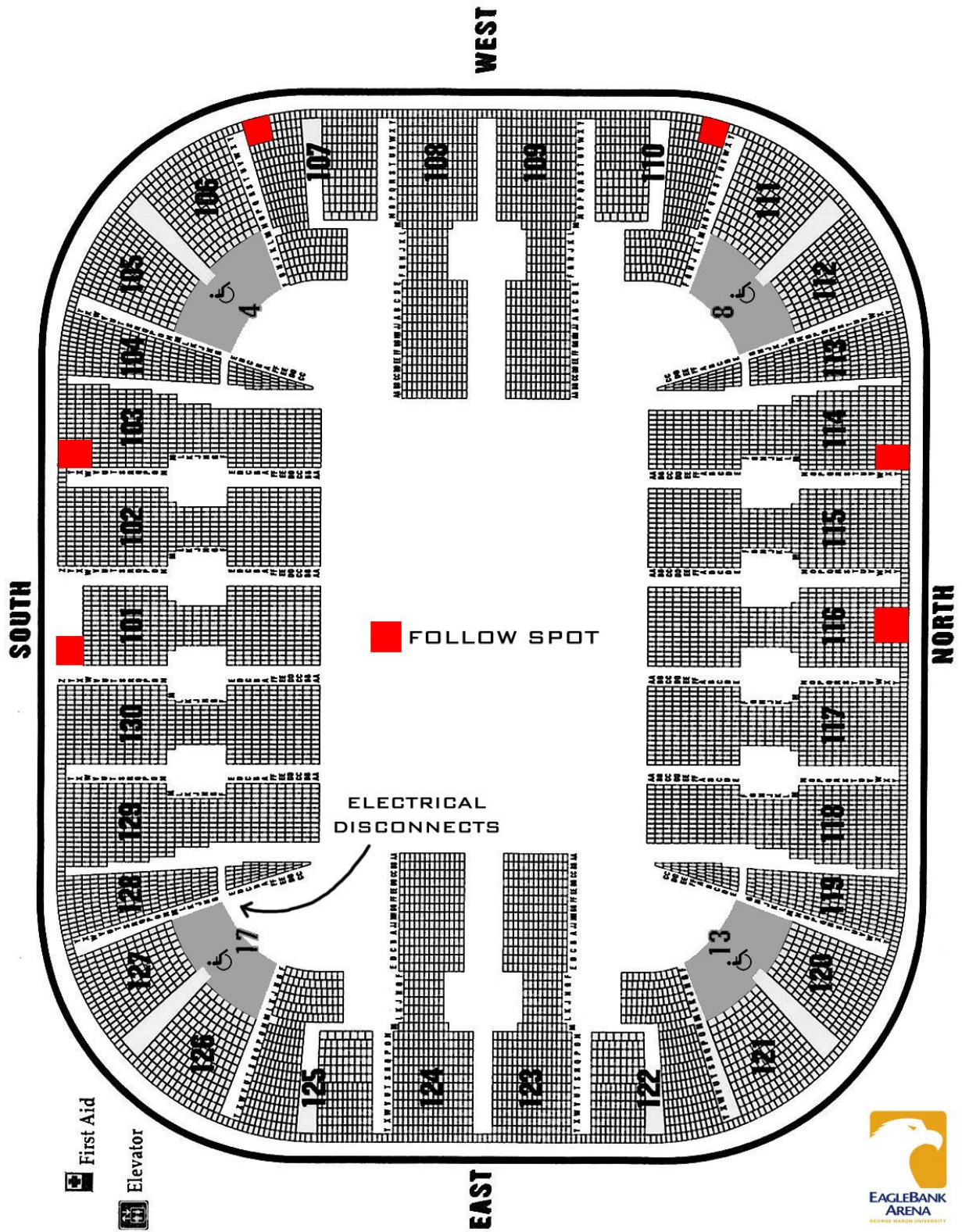
For application and other information:

<https://www.vafire.com/state-fire-marshals-office/permits/fireworks-and-flame-effects/>

CONFETTI

An additional cost may occur if confetti or show debris is generated. This must be advanced.

FOLLOW SPOT LOCATIONS



AUDIO & VIDEO

EagleBank Arena has a house PA system suitable for announcements during sporting events and reinforcement of live speech. There is also a portable sound system suitable for use on the concourse or in the hospitality room for small events, which can be made available upon request.

INTERCOM

The intercom is a clear-com system with a model PS-452 power supply. This two-channel system is capable of supporting 100 headsets. The power AMP is rack mounted in the amplifier room on the concourse level. Permanent headset stations are installed at the follow spot positions, catwalk, control booth, and house light positions. Productions may use their own communication equipment and utilize EagleBank Arena wiring if desired. There are 13 headsets and belt packs in-house.

MIX LOCATIONS

In general, for an end stage concert the last rows of section 5 on the arena floor are held for lighting and sound mix. For a half arena concert the mix location is behind the last rows of section 2. Risers are available for mix platforms at the following heights:

Six – 4' x 8' x 8"

Six – 4' x 8' x 16"

Six – 4' x 8' x 24"

FIRE SAFETY ANNOUNCEMENT

EagleBank Arena has a custom Fire Safety Announcement that must be played 10-15 minutes before the event begins. The announcement is available in both English and Spanish. The announcement can be given to FOH via flash drive on the day of show or emailed in advance.

DAKTRONICS SCOREBOARD AND MESSAGE CENTER

The centerhung scoreboard is utilized for sporting events. There are IPTV units on the concourse which will accept and display a static or animated image. Graphics should be saved in a jpeg format for static display or AVI for moving displays. All graphics must be approved by arena management and received at least 10 business days prior to an event.

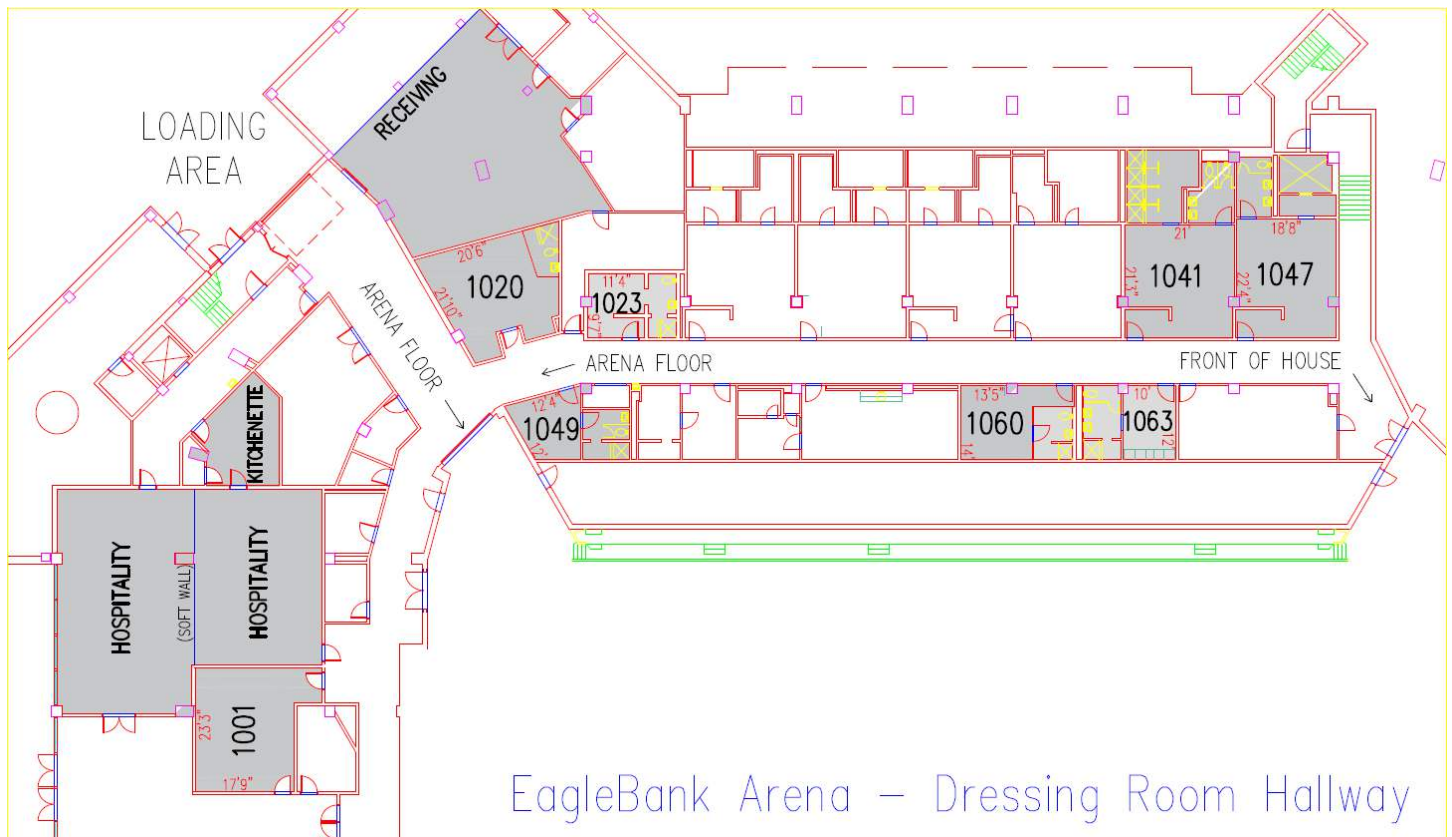
INTERNET

The building is equipped with wireless internet capability. The network password will be provided on the day of the event. Hardwire internet can be provided in most rooms throughout the building. This service will incur an additional cost and must be requested in advance.

DRESSING ROOMS

Rooms 1020, 1041, and 1047 are the three largest dressing rooms. All dressing rooms have showers and toilet facilities, with the exception of 1001 (nearest restrooms are immediately outside the room to the left). Three sets of upholstered furniture are available. All other décor is the responsibility of the promoter.

EagleBank Arena has a limited amount 8' draping in various colors. Please advance pipe and drape requests.



Additional dressing room photos are available upon request.

PRODUCTION OFFICE

The production office (1001) is available nearby the arena floor and loading dock. This room can also be used for press conferences during sporting events.

STORAGE

Per the Virginia State Fire Marshal, road case parking and/or storage of any kind (tables, wardrobe racks, etc.) in the back hallways and dressing room hallway is prohibited unless authorized by EagleBank Arena management.

ELEVATOR

There is one elevator located backstage, adjacent to the loading area. It is not a freight elevator. The door is 3.5' wide, with interior dimensions of 6'-9" x 4'-8". This elevator can be used to take merchandise or other smaller items to the concourse level.

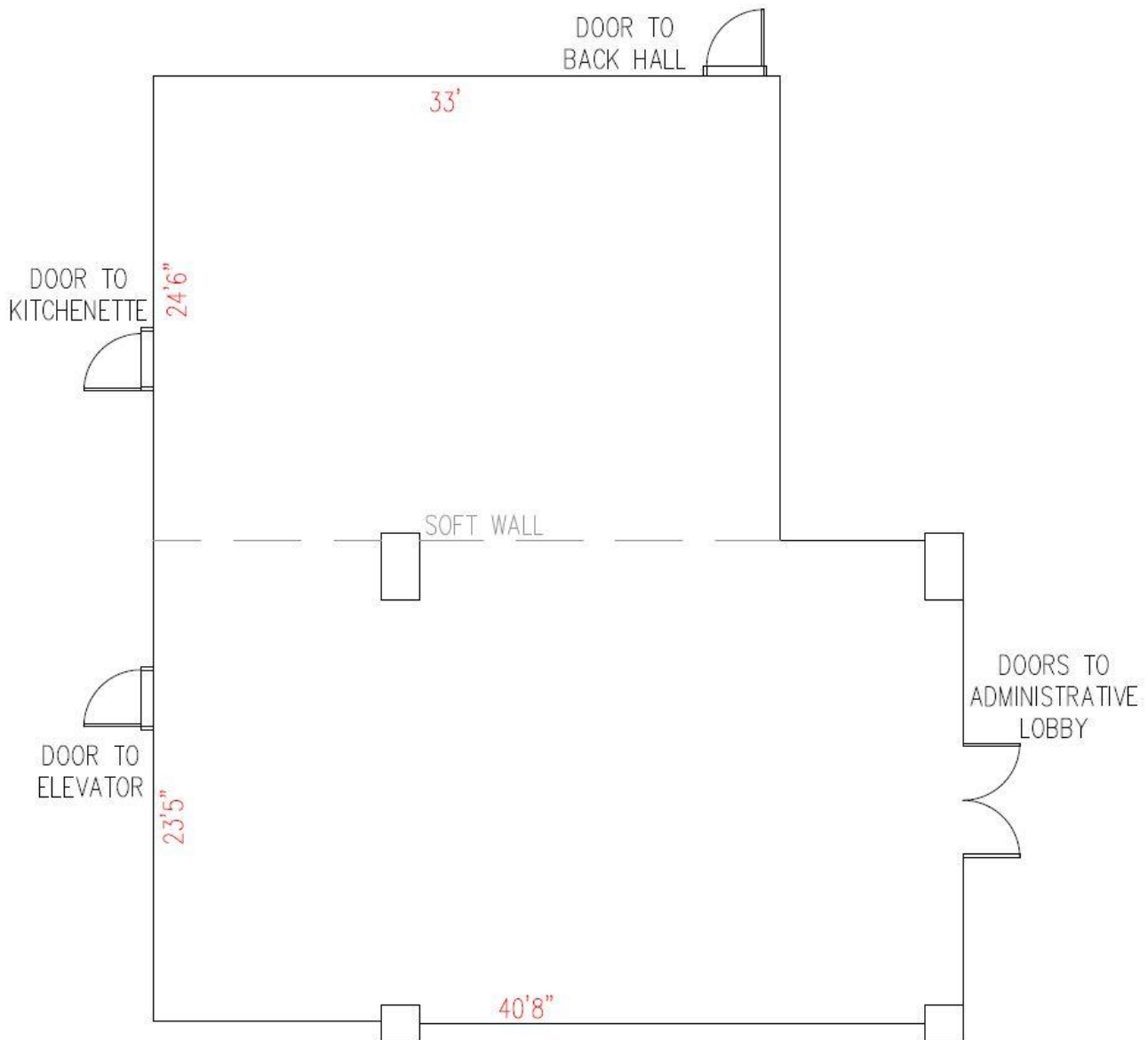
HOSPITALITY ROOM

There is one room available for VIP events, parties, catering, meetings, etc. This room is located on the arena floor level, behind the stage. The maximum capacity at standing room only is 260 people. The maximum capacity with tables and chairs is 120 people. There is a partition wall available to divide the room in half. Diagram below.

All VIP events must be advanced, as additional costs may occur to cover staffing, security, and set up requirements.

KITCHENETTE

The kitchenette is located next to the Hospitality Room and includes a sink, ice maker, and preparation space. There are no heating or cooking components.



Additional Hospitality Room photos are available upon request.

SECURITY & MEDICAL

SECURITY

EagleBank Arena has an overnight security guard on duty from 5:00 pm - 8:30 am daily.

Event security is provided by Contemporary Services Corporation (CSC). EagleBank Arena requires all security riders and requests to be received a minimum of six weeks prior to an event, in order to ensure proper staffing. A bag check is conducted on all patrons entering the arena. Additional security measures may be added with advance notice and at the cost of the promoter.

George Mason University police are onsite during event hours only. Per EagleBank Arena protocol, these officers are the lead to make 911 calls, as well as to handle arrests and respond to bomb threats, active shooters, and any other emergency issues. Additional police requests may be added with advance notice and at the cost of the promoter.

MEDICAL

EagleBank Arena has one medical staff, either an RN or EMT, on site during event hours only. Additional medical standby teams or ambulance units can be added with advance notice and at the cost of the promoter.

The closest medical facility is INOVA Emergency Room, located 5 minutes from the arena at 4315 Chain Bridge Rd, Fairfax, VA 22030 (703-877-8200). The normal response time for 911 calls is less than 5 minutes or so – if they come from the local station which is 1.5 miles away.

LOCAL VENDORS

AUDIO

EventEQ	www.eventeq.com	410-242-5050
RCI Systems	www.rcisystems.com	301-931-9001
Maryland Sound	www.marylandsound.com	410-448-1400
Southard Audio	www.southardaudio.com	540-234-0529

CATERING

Taste Event Catering	jessieritz@gmail.com	443-927-6123
Laurrapin Caters	catering@laurrapin.com	410-939-3394
Sodexo Catering	catering@gmu.edu	703-993-3302
Glory Days Catering	pdevine@glorydaysgrill.com	703-895-1276

DRY ICE

Roberts Oxygen	www.robertsoxygen.com	301-948-8100
Air Gas	www.airgas.com	703-393-1832

FORKLIFT

Sunbelt Rentals	www.sunbeltrentals.com	703-356-6262
Rentals Unlimited	www.rentalsunlimited.com	301-294-6066

GENERATORS

Sunbelt Rentals	www.sunbeltrentals.com	703-356-6262
-----------------	--	--------------

LIGHTING

EventEQ	www.eventeq.com	410-242-5050
Atmosphere Inc.	www.atmospherelighting.com	301-585-2100
Kinetic Artistry	www.kineticartistry.com	301-270-6666

PROJECTIONS/AV

Mirador Video	Shahid Islam	202-412-2682
Advanced Visual	www.avpric.com	804-747-4777
American AV	www.aavevents.com	703-573-6910

RIGGING

Gridmonkie LLC	www.gridmonkie.com	804-675-1932
Potomac Steel	www.potomacsteel.com	703-550-7300
I and I Slings	www.iandisling.com	703-550-9405

RUNNER

Eddie Villagomez	bandrunner83@yahoo.com	703-216-0301
------------------	--	--------------

STAGING

All Stage & Sound	www.allstageandsound.com	301-977-3686
-------------------	--	--------------

THEATRICAL SUPPLIES

Kinetic Artistry

Bergmann's Cleaning Inc.

www.kineticartistry.com

www.bergmanns.com

301-270-6666

703-247-7600