



KeyBank Center

Address:	One Seymour H. Knox III Plaza, Buffalo, NY 14203
Main Telephone:	(716) 855-4100, FAX - (716) 855-4110
Operations Fax:	(716) 855-4168
Event Booking:	(716) 855-4123
Box Office:	(716) 855-4444, FAX - (716) 855-4134
TicketMaster:	1-800-653-8000 (Customer Service Number)
Catering:	716-855-4552
Arena Security:	(716) 855-4414 (24 Hours)



TABLE OF CONTENTS

Phone Numbers and Contact Information	Page 3
General Building Information	Page 4
Seating Capacities	Page 5
Advertising and Promotions	Page 6
Security	Page 6
Medical	Page 6
Telephones & Internet	Page 6
Show Parking	Pages 7-8
Utilities	Page 9
Lighting	Page 10
Follow Spots	Page 10
Camera Platform	Page 10
Pyrotechnics	Page 10
Intercom	Page 10
Sound System & Scoreboard	Page 11
Load-In	Page 12
Stagehands	Page 12
Freight Elevator	Page 12
Rigging Diagrams & Notes	Pages 13-14
Equipment	Page 15
Dressing Rooms	Page 16
Concessions, Banquet and Meeting Rooms	Page 17
Arena Productions	Pages 17-18
Television Production Patch Bay	Page 18
Directions to KeyBank Center	Pages 19-20
Public Parking and Transportation & Road Closures	Page 21
Local Suppliers	Page 22
Local Vendors	Page 23
Local Restaurants	Pages 24-25
Local Hotels	Page 26
Transportation	Page 27

**BUILDING CONTACTS**

TITLE	NAME	PHONE	EMAIL
VP Operations	Stan Makowski	716-855-4520	Stan.Makowski@sabres.com
Director of Live Events	Rob Crean	716-855-4123	Rob.Crean@sabres.com
Director of Ticket Operations	Marty Maloney	716-855-4568	Marty.Maloney@sabres.com
Sr. Director of Arena Operations	Beth Guiliani Gatto	716-855-4281	Beth.Guiliani@sabres.com
Director of Building Services	Dennis Hooper	716-855-4598	Dennis.Hooper@sabres.com
Director of Security	Marc Brenner	716-855-4551	Marc.Brenner@sabres.com
Event Manager	TJ Roward	716-855-4471	Thomas.Roward@sabres.com
Event Manager	Alex Fusani	716-855-4424	Alex.Fusani@sabres.com
Security Manager	Todd Zwifka	716-855-4522	Todd.Zwifka@sabres.com
Technical Comm. Manager	Ken Dowd	716-855-4570	Kenneth.Dowd@sabres.com
Technical Comm. Manager	Jake Nowak	716-855-2701	Jake.Nowak@sabres.com
VP of Ticket Sales and Service	Frank Batres-Landaeta	716-855-4560	Frank.Batres-Landaeta@sabres.com
Marketing Manager	Vilona Trachtenberg	716-855-4240	Vilona.Trachtenberg@sabres.com
Merchandise Manager	Jeff Smith	716-855-4478	Jeff.Smith@sabres.com
VP Hospitality	Dom Verni	716-855-4552	dominic.verni@topshelfmgmt.com



GENERAL INFORMATION

- * The KeyBank Center consists of a rectangular arena seating area with 19,070 seats.
- * The KeyBank Center is located just off a major interstate system. The arena is also a stop for the Metro Rail rapid transit system.

Hockey / Lacrosse / Basketball	19,070
In-the-round	20,419
End Stage	16,612
Reduced House Configurations	5,500-10,579

Doors Open: 60 minutes prior to show time.

Concessions: SportService – Delaware North.

Catering: see Catering – pg. 18

Merchandise: KeyBank Center supplies stands & staff.

Pyrotechnics Allowed: City of Buffalo Permits Required (See pyrotechnics – pg. 9)

Building Rental Period: Normal license agreement is based on a 3-1/2 hour performance but can be altered to accommodate a longer show.

Fire Prevention / Floor Plans: All floor plans must be submitted 30 days prior to on sale for approval by the Fire Marshall. Local Law requires 7 square feet per person for a GA floor.

- * Packages can be received and held at Security Base.
- * Shipping & Receiving hours are Monday-Friday 9am-5pm.
- * **Pyrotechnics are not to be forwarded to the building.**



SEATING CAPACITIES

Hockey/ Soccer/ Lacrosse:	19,070
Basketball:	19,500
Center Stage:	19,468
End Stage 360:	18,827
End Stage 270:	14,711
End Stage 180:	13,556
Reduced House Configurations:	5,000 – 10,579

KeyBank Center is ADA compliant. Seating is available for wheelchair patrons.



ADVERTISING & PROMOTION

KeyBank Center has a full service, in-house marketing department that can provide a comprehensive advertising and promotions campaign to ensure the success of your event. We combine media buying, public relations and promotions, with our knowledge of the market, to create a customized program that is right for your targeted audience.

FACILITY SECURITY

- The Arena employs 24 hr. building security that can be reached by phone at 716-855-4414.
- Additional security can be arranged through the Director of Security.
- Requests for Police Escorts should be directed to the building Director of Security.

MEDICAL SERVICES

- EMT personnel are on site for all events from doors opening through walk out for Arena patrons.
- The First Aid Emergency Room is located in the Backstage Area. This room meets or exceeds all NYS Department of Health requirements.
- Special requests for medical services should be arranged with the Event Manager.

TELEPHONE & INTERNET

- Telephone service can be provided throughout the arena by prior arrangement with the Event Manager. Service is also available to show vehicles. Cost is \$150 per line.
- IT lines can be provided in various locations. Please contact the Event Manager. IT lines are \$250 per line per day. Dedicated WiFi Networks can be set up for \$300 per network per day. Please contact the Event Manager.
- *Please note- rates are subject to change. Please contact Event Manager for the current rates.*

WI-FI

EXTREME NETWORKS ARENA-WIDE WI-FI SOLUTION:

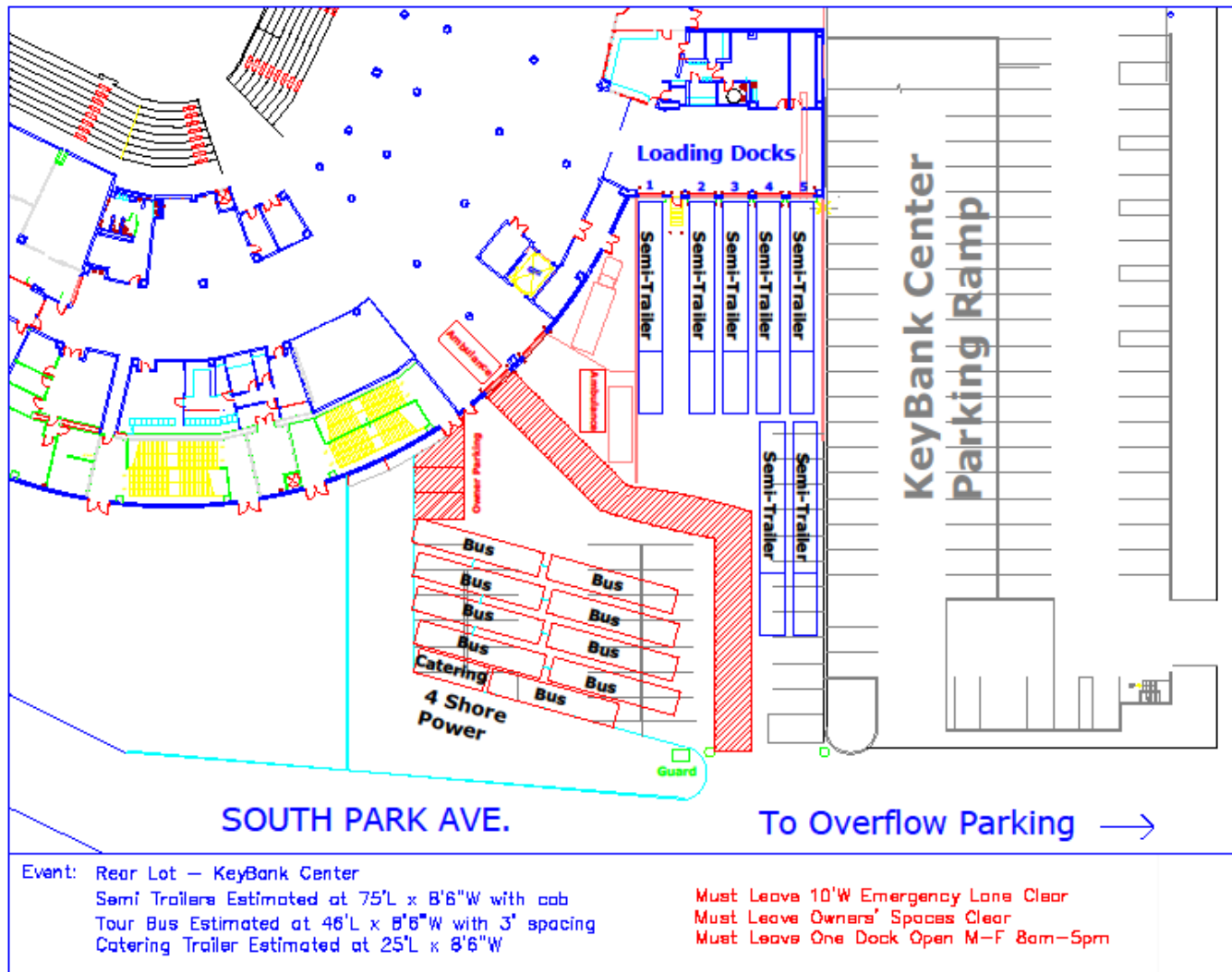
The KeyBank Center deploys Extreme's full connectivity and analytics solutions, which includes 450 ExtremeWireless™ access points and wireless controllers, ExtremeManagement™, ExtremeControl™, and ExtremeAnalytics™ to enhance Wi-Fi connectivity, improve game-day operations and support mobile services such as ticketing and concessions. The deployment serves as the industry's first 802.11ac Wave 2 implementation to be completed in an arena environment.

KeyBank Center was outfitted with **Extreme's flow-based 802.11ac Wave 2 technology**, including new access points that deliver [location-based application analytics](#) and upgraded speed, as well as additional capacity and enhanced security.



SHOW PARKING

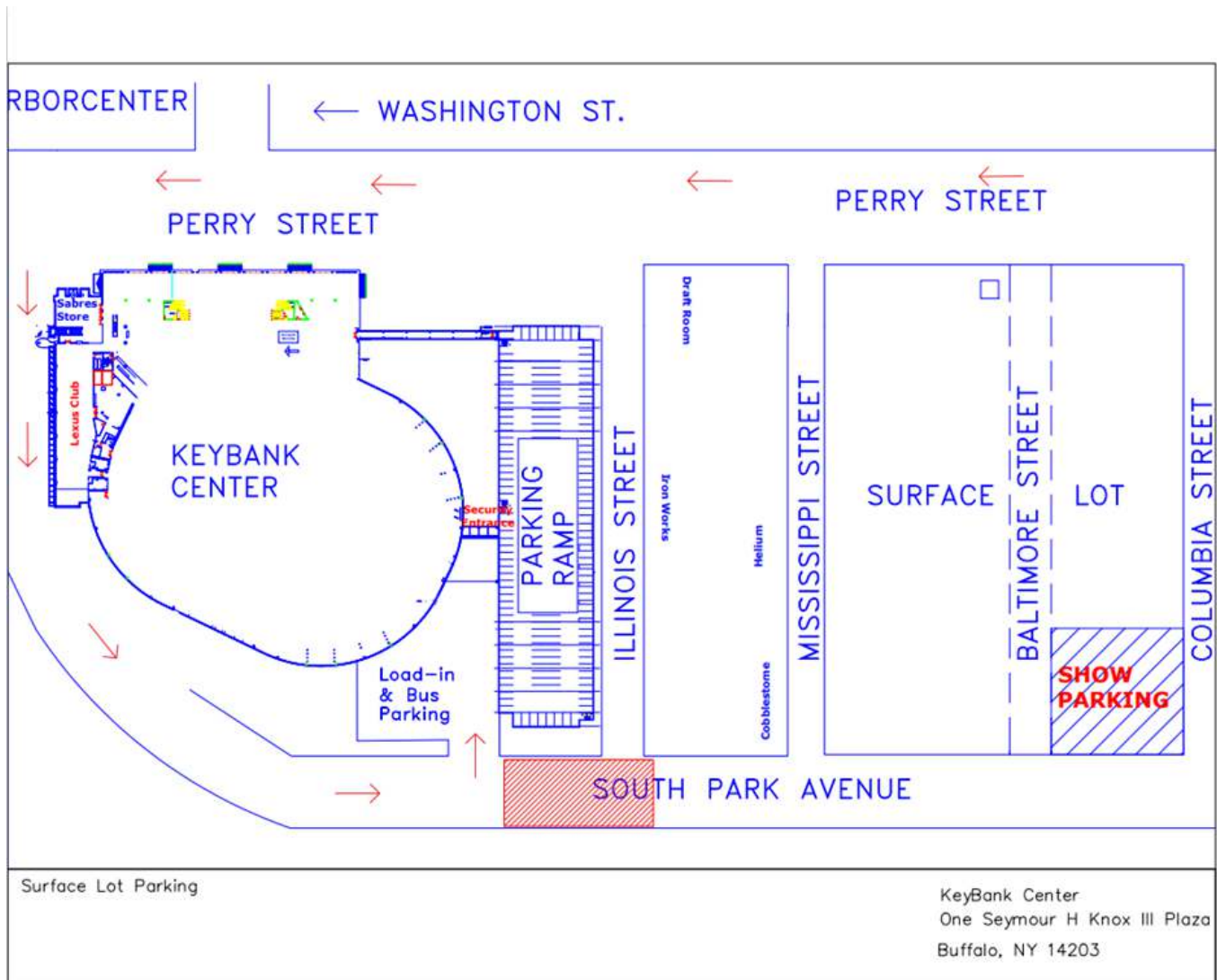
Show Parking (including trucks and buses) is available in the rear lot of the KeyBank Center, located off of South Park Ave. This lot can accommodate a combination of 14 trucks and or buses.





KeyBank  Center

Overflow Parking is available in the surface lot located off South Park Ave. between Baltimore and Columbia. Show will be billed per spot they occupy in the surface lot at the designated rate for the event. Please contact Event Manager for any parking needs.





UTILITIES

Electrical –

- Arena Floor/Dressing Room – 20 amp, 110V service throughout
- Show Power-
Up Stage Left
 - o (4) 400 amp/5 wire/208/3 phase with cam lock connectors (Lighting)
 - o (1) 400 amp/208/ 3 phase for sound (Isolation Transformer)
 - o (1) 100 amp/208/120V
- (1) 100 amp/208/120V used for washer & dryer plugs at Zamboni pit.

Up Stage Right
 - o (1) 400 amp/208/3 phase
 - o (1) 200 amp/208/3 phase located in Catering Room
- Rear Parking lot – (2) 100 amp/208/single phase, (1) 60 amp/208/3 phase. 5 buses can be powered.
- TV Truck Interface - (2) 200 AMP; (3) 400 AMP* - 3 PHASE 120/208 VOLT Disconnects
 - o ***One of the 400amp services in this room is powered from the show power room.**
- The Up Stage Left electrical closet is approximately 30 feet from the Up Stage Left corner of the stage when the arena is set for an End Stage show. Up Stage Right electrical panel is approximately 30' from Up Stage Right Corner of the stage when arena is set for an End Stage show. The TV Truck Interface power is approximately 200 feet from upstage center when set for an End Stage show.
- When the arena is set for a Center Stage show the, disconnects are approximately 150 feet from the stage.
- Power distribution for conventions, trade shows, and exhibitions on the arena floor and concourse levels are available.



LIGHTING

Bowl Lights: Eaton's advanced Ephesus LED sports lighting and controls system.

The solid-state lighting system features Ephesus Arena Pro luminaires with color temperature tuning capabilities and a wired DMX control system that interfaces with the arena's existing control system. It is the only LED system with 100 percent dimming capabilities.

Photo Strobe Lights: One complete system available for rent, including six (6) Speedotron 2,400 watt units, with sync panels located throughout the Event Level. There are three additional power and sync systems available.

FOLLOWSPOTS

Eight (8) – 3,000 watt Strong TM Gladiator III follow spots are available. There are four lights distributed in two baskets above sections 326 & 327 in the upper catwalk. There are also spotlights in lower baskets above section 304 & 322 (downstage positions) and 308 & 318 (upstage positions).

Additional follow spot locations can be provided if advanced and rental spotlights brought in to accommodate.

CAMERA PLATFORM

Television camera platform is located at center ice of the 200 level concourse and is 150 feet from the stage. This platform is 5' deep by 29' wide.

PYROTECHNICS

KeyBank Center is subject to City of Buffalo Fire Regulations. City of Buffalo Fire Marshals may request a demonstration of effects. Inquiries should be directed to the City of Buffalo Fire Department, Fire Prevention Office at (716) 851-5707. All plans are subject to approval of building management.

INTERCOM

- The intercom system is a Clear-Com system with a model Ps-452 power supply. This is a (2) channel system capable of supporting 100 headsets.
- Permanent headset stations are installed at the following positions:
- Catwalk, Dressing Rooms, Sound/Lighting booth, Event Floor, and all Follow Spot locations.
- Productions may use their own communication equipment and interface with the building's system, if desired.

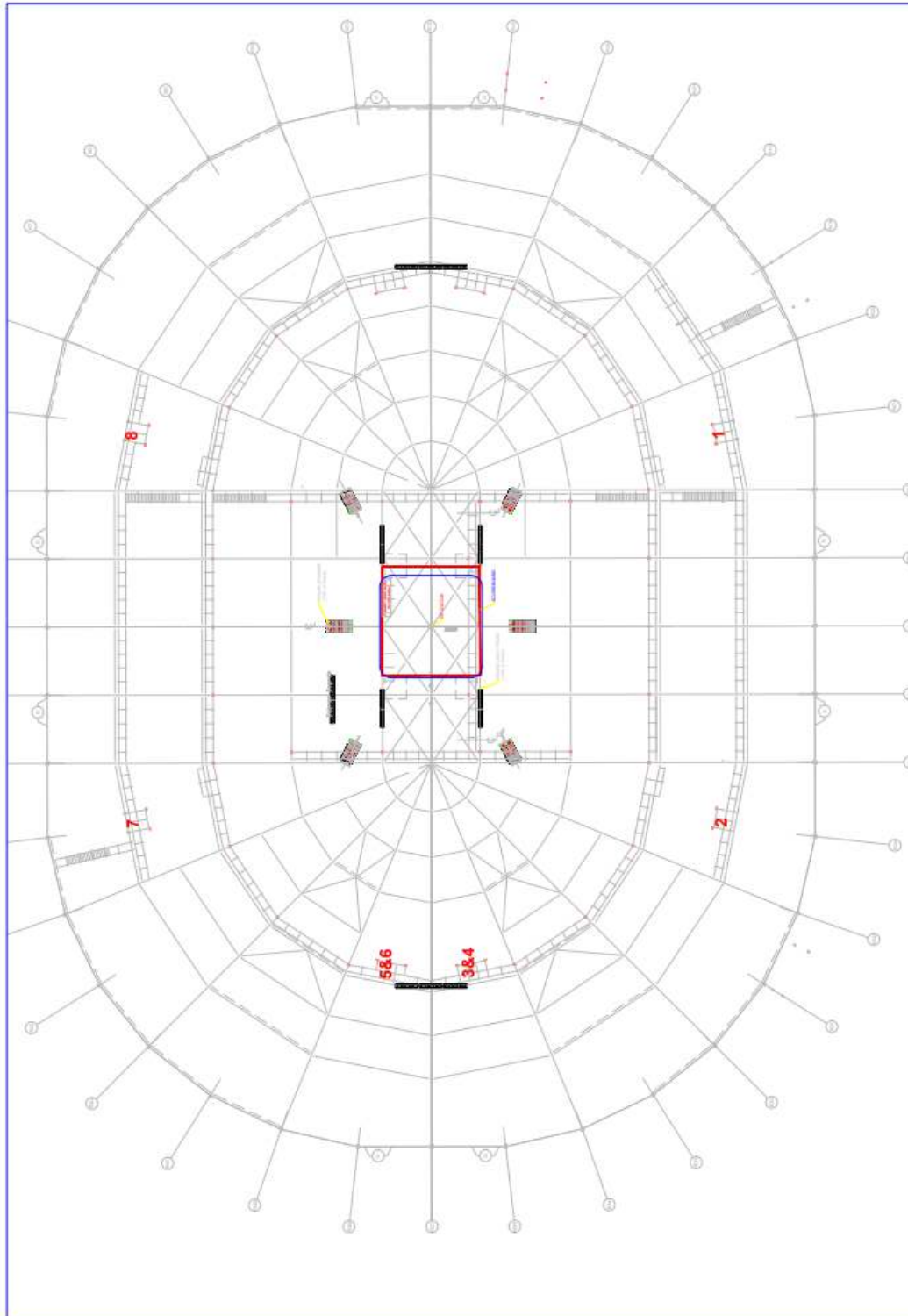


SOUND SYSTEM

- The Arena is equipped with a state-of-the-art sound system in the seating area and the concourses. The system can be zoned and distributed to different areas of the building. Microphones, stands and basic audio/visual services are provided in-house.
- This sound system is suitable for announcements and music during sporting events and reinforcement of live speech and musical events.
- JBL line array speakers designed by Clair Brothers. 88 ASC amps ranging from 1250-4000 watts per channel. It is approximately 75' feet from the arena floor to the bottom of the speaker cluster. Speaker clusters cannot be raised.
- The 70-volt distributed sound system services the marshaling area, pavilion, 100 level KeyBank Club, Blue Zone Sports bar, and other areas of the building.
- The main speaker system is powered and run from the Press Level Sound and Lighting booth. The amplifiers are located on the center Catwalk. The distributed system is controlled from the Audio/Video Control room on the Event Level.

VIDEOBOARD AND MESSAGE CENTERS

- One LED mass that can be four-sided, Video Display & Scoreboard are center hung, high-definition integrated video with 27'9"H x 43'W screens on each side. Arrangements can be made to use these boards for events at cost. Specs are as follows:
 - o Upper Halo: 3120 x 290
 - o Main: 16:9 VB, 1920 x 1080
 - o Wedge: 576 x 1430
- The computer driven message centers are capable of being programmed to display announcements, advertising, or game related graphics. Everything must be pre-programmed with all files sent to venue prior to the event for uploading.
- Arrangements can be made to use the ribbon boards for events. 360-degree integrated LED board on the Suite Level fascia.
 - o 360 Ribbon Board is 4K.
 - o **7776 (W) x 96 (H)**
 - o Recommended Static File Format: .png
 - o Other Acceptable Static File Formats: .png .bmp .gif .jpg .tga .mp4
 - o Display Ready Animated File Format: MP4 with H.264 Codec
- Cable TV Service is available throughout the facility including backstage and dressing rooms.
 - o For further information, contact the Technical communications Manager @ (716)-855-4570.



KeyBank Center – Buffalo, NY – Rigging Grid Notes

High Steel approximately 128' & slopes to 119' at stage end

Speakers are dead hung & cannot be moved.

8 spotlights. 4 in lower baskets, 4 at north end



LOAD-IN

- KeyBank Center has five (5) loading dock bays – The loading dock is at standard tractor-trailer height, four of the five bays have adjustable loading ramps, and all have truck-loading lights.
 - o **** One loading dock bay is reserved for deliveries M-F 8am-5pm***
- It is approximately 150 feet from the loading dock to the End Stage position on the arena floor.
- KeyBank Center has one (1) accessible loading bay door at Grade/Event Level, which allow tractor-trailer access into the building directly backstage.
- The loading bay door is approximately 100 feet to the End Stage position.
- There is over 21,000 square feet of space available backstage.
- Located adjacent to the facility with shore power and telecommunications capabilities, the truck and bus parking area can accommodate different combinations of up to 14 trucks and buses. Please contact the Event Manager with any questions.

STAGEHANDS

IATSE Stagehands – KeyBank Center has a working agreement with IATSE Local 10. All needs should be coordinated with the Event Manager. There is a 6 hour minimum for load in and load out, with the exception of loaders who have a 5 hour minimum for the load in. All staff must be cut or fed by the 5th hour to avoid meal penalty. Any employee who is not cut by this time will be paid double time until cut or given a meal. A minimum of 5 department heads (Steward, Electrician, Head Carpenter, Head Property Man, and Head Sound) must be on a call when work is being done. Show call is considered 30 minutes before ticketed start time and is a 4 hour minimum.

FREIGHT ELEVATOR

1 – 10,000 lb. capacity freight elevator is located directly adjacent to the loading dock.



RIGGING

GENERAL GUIDELINES:

The structural engineers have provided the following mandatory guidelines for concert/show rigging at KeyBank Center.

All rigging **must** conform to these guidelines. Please make note of them and plan the rigging for your show accordingly.

- 1) The overall rigging shall not exceed 120,000 lbs.
- 2) Rigging loads shall only be applied to the bottom chord level members marked with an "A" or "B" (See drawing next page). No other steel members such as roof joints, Truss Top Chords, Roof Beams, Catwalk Framing etc. shall be used to suspend rigging loads.
- 3) The maximum total load on any single span beam or truss bottom chord shall be 6,000 lb. for members marked with an "A" and 7,500 lb. for members marked with a "B".
- 4) The maximum angle of applied rigging loads shall not exceed 45 degrees vertical.
- 5) The total load distribution to any single truss T1, T2, T3, T4, T5, T6, OR T7 shall not exceed 20,000 lb. per truss. The total load distribution to truss T3A shall not exceed 10,000 lb.
- 6) Members designated as rigging beams are identified with 2" tall letters painted on each side of the web at the center of the span as follows:

A- Beams "Rigging Beam Total Max. Load = 6,000 lb."

B- Beams "Rigging Beam Total Max. Load = 7,500 lb."

Arena Rigging – Open steel throughout the Arena. Steel is 130 ft. from the floor at center and 117 ft. from floor at back wall.

The video scoreboard is situated in the center of the arena and can be raised. It is approximately 65 feet in storage position, from the arena floor to the bottom of the video board.

Additionally, all production rigging is required to conform to current OSHA mandated safe rigging guidelines and laws, with respect to rigging cables, sling types, methods of attachment, and use of personal safety devices and appliances.



KeyBank  Center

RIGGING GRID

***Double-Click for Enlarged View**



EQUIPMENT

Barricade-

- Eighty (80) linear feet of 4' high MOJO G2 Aluminum Barricade; unpainted.
- Eighty (80) linear feet of 4' high Stage Right TM Barricade with a 4' floor plate is available. This barricade has a cage like structure so that sound passes through it.

Risers: All risers are 3' x 8'.

- (20)-4" high, (20)- 6" high, (20)-8" high, (20)-12" high, (20)-16" high& (20)-24" high

Cushioned Folding Chairs: 2,000

Tables: 8' x 30" rectangle tables

8' x 18" rectangle tables

6'x 30" rectangle tables

6' round tables

Bicycle Barricade: 120 pieces 8' x 4'

Miscellaneous: Table and Stage skirting, Pipe and Drape, Podiums.

Staging:

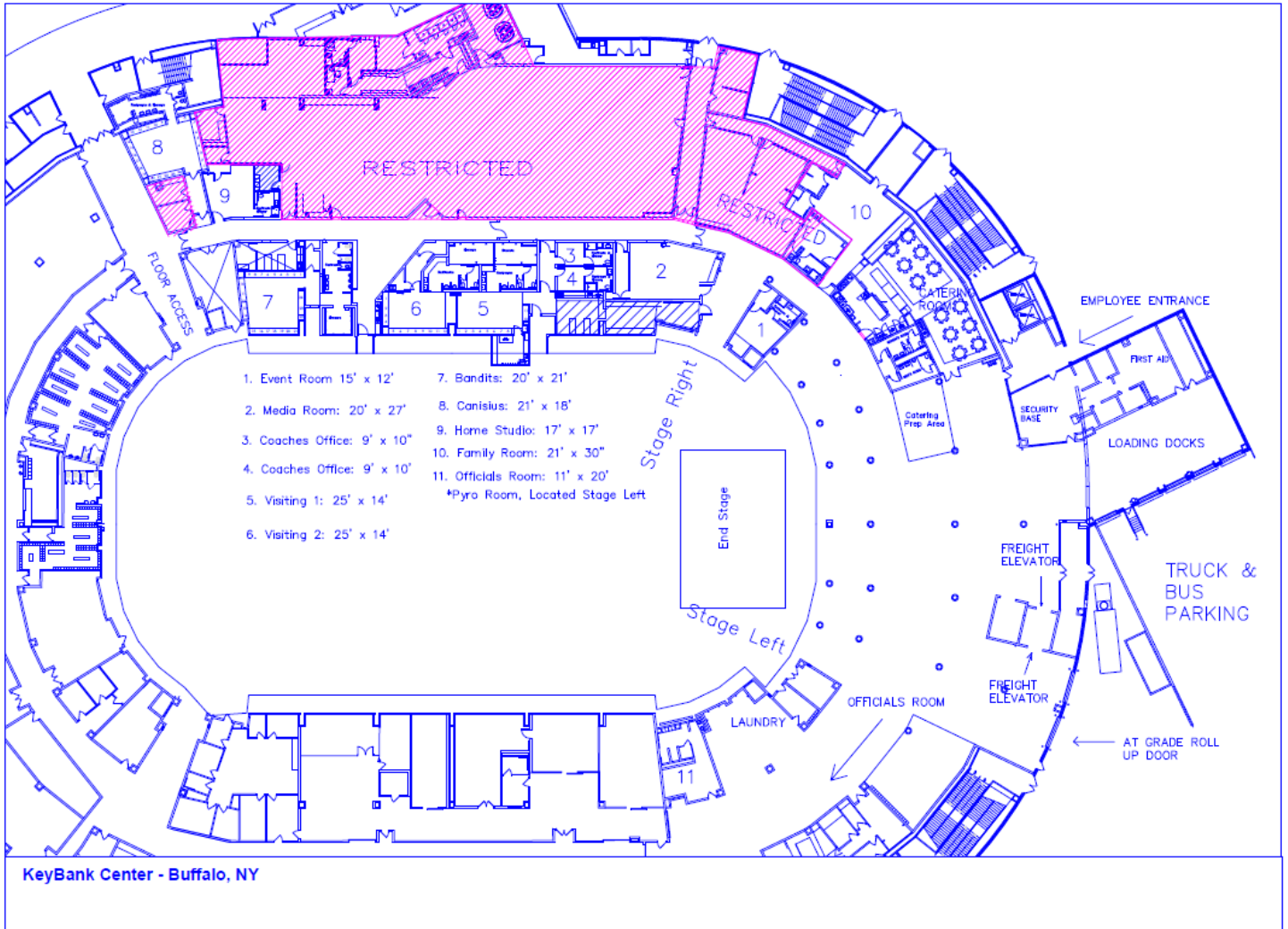
- Stage Right TM brand stage consisting of 90 – 4'x8' units. All units are adjustable from 4' to 6' high in 4" increments. **Maximum stage size is 72' wide by 40' deep.** There are also four sets of adjustable stairs. Set-up and use of house staging is included in the building rent.
- Robbins Sports Floor covering is used to cover the ice during the hockey season.

Forklifts:

- Forklifts are included in the building rent assuming the in-house lifts meet the requirements of the show. Additional lifts can be rented and reimbursed through settlement. Forklift Operators need to be included in the stagehand call.
- 2 – Clark (5,000) lb. capacity, 1 – Clark (3,700) lb. capacity
- 1 – Set 7' fork extensions, 1 – Carpet Attachment



DRESSING ROOMS & BACK OF HOUSE





ARENA CONCESSIONS

The Key Bank Center concessions are managed by Delaware North. Delaware North also manages other spacing in the venue including the Lexus Club and the KeyBank Club 200, which are spaces that can be used for smaller events and meetings. Catering can also be arranged with Delaware North for these spaces, and for the general events at the arena. Please speak with an event manager to arrange any catering needs or use of the Lexus Club or KeyBank Club 200.

CATERING NEEDS

The KeyBank Center has options available for any catering needs that arise for an event. Please speak with an event manager to discuss options available for catering in the venue.

BANQUET & MEETING ROOMS

	<u>Banquet Seating</u>	<u>Cocktail Reception</u>
Lexus Club	375	550
KeyBank Club 200	200	300
Pavilion	800	1,200

ARENA PRODUCTIONS

POST-PRODUCTION FACILITIES

- State of the art production equipment available in the Video Board control room located on the Event Level (Stage Left)

PRODUCTIONS

- Studio or location packages, equipment crews
- Multiple TV Studios
- Ikegami Chip Cameras w/studio or handheld configurations
- Digital Control Room Interface to Fiber transmission services
- Five bay mobile production truck facilities



ARENA PRODUCTIONS CONTINUED

VIDEO CONFERENCING

- Conferencing available for groups of all sizes up to 19,000
- HD Video Board & Double Halo Display presentations (located above and below Video Board)
- Full in and out bound circuit Fiber transmission
- State of the art studios & meeting rooms
- Catering service available for business lunch or dinner conferencing

TRANSMISSION SERVICES

- Fiber Optic Link to the World
- VYVX and HTN Transmission Services
- Full Bandwidth audio transmission and reception over ISDN phone lines.
- Direct video/audio connectivity to local TV Studios, Cable Providers, and National Networks

OTHER SERVICES

- Live Shots, Talk back interviews and Tape Feed
- Video or Halo graphics Design
- Computer Graphics
- Other services available upon request

For further information, contact the VP of Broadcast Services by phone at (716) 855-4476.

TELEVISION PRODUCTION PATCH BAY

Located in the vomitory, 30 ft. Up Stage left near the electrical closet:

4 – Co-Axial Risers

6 – Female RCA Risers

2 – Tri-Axial Risers

6 – Male RCA Risers



DIRECTIONS TO KEYBANK CENTER

From the North (Including Canada):

Take 190 South; you may take either of two exits:

Recommended

- Exit 5 (Louisiana Street): At the bottom of the exit, turn left onto Louisiana Street. Turn right onto Perry Street (1st light) or onto South Park (2nd light). KeyBank Center is straight ahead. Parking is available just past Michigan Street.

Alternate

- Exit 6 (Elm Street): As you Exit 190, bear left to the ramp and turn right onto Seneca Street. Take Seneca Street to the first light and turn right onto Michigan. Take Michigan over the bridge and look for KeyBank Center on right. Parking is available in the lot and ramp off both Perry and South Park Streets.

From the South, East and West (via Thruway):

Take Interstate 90 (Thruway) to Exit 53, which is 190 North. You may take either of two exits:

Recommended

- Exit 5 (Hamburg Street): At the exit turn right onto Hamburg Street. Turn right onto Perry Street (1st light) or onto South Park (2nd light). KeyBank Center is straight ahead. Parking is available just past Michigan Street.

Alternate

- Exit 6 (Elm Street): As you Exit 190, bear left to the ramp and turn right onto Seneca Street. Take Seneca Street to the first light and turn right onto Michigan. Take Michigan over the bridge and look for KeyBank Center on right. Parking is available in the lot and ramp off both Perry and South Park Streets.

From the East:

Recommended

- From Interstate 90 (Thruway): take route 33 West to downtown Buffalo. Route 33 turns into Oak Street. Continue on Oak all the way to 190 South and exit immediately at Exit 5 (Louisiana Street). At the bottom of the exit, turn left. Turn right onto Perry Street (1st light) or onto South Park (2nd light). KeyBank Center is straight ahead on the right. Parking is available just past Michigan.

Alternate

- From Interstate 90 (Thruway): Take Route 33 West to downtown Buffalo. Exit onto Oak Street and proceed to Swan Street. Turn right on Swan and left onto Washington. KeyBank Center is straight ahead.



KeyBank  Center

DIRECTIONS TO KEYBANK CENTER

From the South (Lakeshore):

Take Route 5 over the Skyway. Exit onto Route 190 South. Take either of two exits:

Recommended

- Exit 5 (Louisiana Street): At the bottom of the exit, turn left onto Louisiana Street. Turn right onto Perry Street (1st light) or onto South Park (2nd light). KeyBank Center is straight ahead. Parking is available just past Michigan Street.

Alternate

- Exit 6 (Elm Street): As you Exit 190, bear left to the ramp and turn right onto Seneca Street. Take Seneca Street to the first light and turn right onto Michigan. Take Michigan over the bridge and look for KeyBank Center on right. Parking is available in the lot and ramp off both Perry and South Park Streets.



KeyBank  Center

PUBLIC PARKING & TRANSPORTATION

Parking Ramp

- Directly adjacent to the arena is a 1,100 space-parking ramp. Surface lots for ample parking surround the facility.

Public Transportation

- The KeyBank Center is conveniently located on 2 major bus routes and on the NFTA's Metro Rail rapid transit system, which services the city of Buffalo. Please visit the NFTA website at metro.nfta.com/ for the most up to date information on bus and metro rail services.



KeyBank  Center

LOCAL SUPPLIERS

SOUND EQUIPMENT & THEATRICAL SUPPLIES

Advanced Production Group

10722 Bennett Rd
Dunkirk, NY 14048
(877) 366-5090

NorthEastern Productions

PO Box 23199
Rochester, NY 14692
(585) 427-8760

Indigo Productions

313 Kensington Ave
Buffalo, NY 14214
(716) 836-2930

BAV Services

10 Sonwil Drive
Buffalo, NY 14225
1-800-264-5010



LOCAL VENDORS

Irish Carbonic - (Effects Gases)

1444 Clinton Street
Buffalo, NY 14206
(716) 827-2727

Don's Welding

6100 Transit Road
Depew, NY 14043
(716) 683-5649

Admar Supply

1394 Military Road
Buffalo, NY 14217
(716) 873-8000

Premier Rental Purchase

1268 Abbott Rd. Plaza
Buffalo, NY 14218
(716) 822- 7368

Deaf Access Services – Sign Language Interpreters

2495 Main Street
Buffalo, NY 14212
(716) 833-1637

Consumer's Beverages

Vendor for Bagged Ice
716-570-3899

Niagara Fire Extinguisher Services

7512 Porter Rd.
Niagara Falls, NY 14030
(716) 282-0191

Hale Northeastern

828 East Ferry Street
Buffalo, NY 14211
(716) 896-6170

All Season Party & Tent Rental

5885 Transit Road
Depew, NY 14043
(716) 688-9531

Maureen's Buffalo Wholesale Flower

441 Ellicott Street
Buffalo, NY 14203
(716) 852-4600



LOCAL RESTAURANTS

Casual Dining

Anchor Bar

1047 Main St.
(716) 886-8920
(716) 883-1134 (takeout)
Anchorbar.com

Chef's Italian

291 Seneca St.
(716) 856-9187
llovechefs.com

***Pearl Street Brewing Co.**

76 Pearl St.
Buffalo, NY 14202
(716) 856-2337
Pearlstreetgrill.com

The Chocolate Bar

114 West Chippewa
Buffalo, NY 14202
(716) 332-0484
Originalchocolatebar.com

***Buffalo Iron Works**

49 Illinois St.
(716) 200-1893
BuffaloIronWorks.com

***Southern Tier Brewery**

7 Scott St.
Buffalo, NY 14203
(716) 763-5479 x 200

TGI Fridays

601 Main St.
Buffalo, NY 14202
(716) 854-6000

Key

*Walking Distance from Arena



LOCAL RESTAURANTS CONTINUED

Fine Dining

Buffalo Chophouse

282 Franklin St.
(716) 842-6900
BuffaloChophouse.com

31 Club

31 N Johnson Park
Buffalo, NY 14201
(716) 332-3131
<http://www.the31club.com/>

***Panorama on Seven**

7th Floor LECOM Harborcenter Marriott
Buffalo, NY 14202
(716) 852-0049
panoramaonseven.com/

Take-Out

Carbone's Pizza (Delivery Available)

568 South Park Ave.
Buffalo, NY 14204
(716) 855-1749

New Dragon Express Chinese

525 Main St.
Buffalo, NY 14203
(716) 842-0909

Salsaritas Fresh Cantina

110 W. Chippewa
Buffalo, NY 14202
(716) 845-5237

Subway Restaurant

120 W Chippewa St.
Buffalo, NY 14202
(716) 856-0194

Jim's Steakout (Late Evening Hours-Check Web)

92 W. Chippewa
Buffalo, NY 14202
(716) 854-6666

La Nova Pizza (Delivery Available)

371 West Ferry Street
Buffalo, NY 14213
(716) 881-3303

Starbucks Coffee

Delaware Ave.
Buffalo, NY 14202
(716) 853-2356

Tim Hortons Café & Bake Shop

1 Scott St.
Buffalo, NY 14203
(716) 855-4540

- DoorDash and GrubHub will deliver to the arena.



LOCAL HOTELS

Buffalo Marriott at LECOM HarborCenter

95 Main Street
Buffalo, NY 14203
(716) 852-0049

[Marriott Harborcenter](#)

* Walking Distance to KeyBank Center

Courtyard Buffalo Downtown/Canalside

One Canalside, 125 Main Street
Buffalo, NY 14203
(716) 840-9566

* Walking Distance to KeyBank Center

Wyndham Garden Buffalo Downtown

125 High St.
Buffalo, NY 14203
(716) 845-0112

Embassy Suites – Buffalo

200 Delaware Ave
Buffalo, NY 14202
(716) 842-1000

Hilton Garden Inn Downtown

10 Lafayette Square
Buffalo, NY 14203
(716) 848-1000

Hampton Inn & Suites

220 Delaware Ave
Buffalo, NY 14202
(716) 855-2223

Holiday Inn Express & Suites Downtown

601 Main Street
Buffalo, NY 14203
(716) 854-5500

Best Western on the Avenue

510 Delaware Avenue
Buffalo, NY 14202
(716) 886-8333

Hyatt Regency Buffalo

2 Fountain Plaza
Buffalo, NY 14202
(716) 856-1234
[Hyatt Regency](#)

Hotel @ the Lafayette

391 Washington St.
Buffalo, NY 14202
(716) 853-1505
[Hotel Lafayette](#)



LOCAL TRANSPORTATION

Buffalo Niagara International Airport (716) 630-6000

Passenger Airlines

American Airlines, Inc.	(800) 433-7300
Delta Airlines	(800) 221-1212
Frontier Airlines	(801) 401-9000
JetBlue Airways	(800) 538-2583
Southwest	(800) 435-9792
United Airlines	(800) 241-6522
Vacation Express	(800) 309-4717

Cargo Airlines

FedEx	(800) 463-3339
Southwest Cargo	(716) 631-5237
UPS	(800) 742-5877
Worldwide Flight Services	(716) 634-5441

Niagara Falls International Airport (716) 297-4494

Buses

Bedore Tours	(800) 538-8433
First Student Charter Bus	(716) 897-5798
Grand Tours Charter Buses	(716) 625-9214
Greyhound Bus Lines	(800) 231-2222

Limousine Service

Buffalo Limo	(716) 835-4997
Status Limousine	(716) 833-7292

Taxicab Service

Airport Taxi Service	(716) 633-8294
Queen City Taxi	(716) 874-5050
Liberty Yellow Buffalo	(716) 877-7111

Truck Repair and Service

Buffalo Truck Center	(716) 821-9920
Dr. Trailer Repair Inc.	(716) 605-6409
John's Towing & Storage	(716) 877-1988