

# LEGACY ARENA

## TECHNICAL GUIDE



**BIRMINGHAM, ALABAMA**

# TABLE OF CONTENTS

*Click on header to jump to page.*

<b>STAFF DIRECTORY</b>	<b>4</b>	<b>BROADCAST</b>	<b>15</b>
<b>ADDRESS</b>	<b>5</b>	<b>PRODUCTION</b>	<b>16</b>
MAILING ADDRESS	5	CURTAINING SYSTEM	16
SHIPPING ADDRESS	5	RIGGING	16
		ROOF FRAMING LAYOUT	17
		UPPER BOWL CURTAIN MAP	18
		ARENA FLOOR ACCESS MAP	19
<b>PARKING</b>	<b>6</b>	<b>DIGITAL MEDIA</b>	<b>20</b>
PARKING MAP	6	CONTENT SPECIFICATIONS	20
		DISPLAY SPECIFICATIONS	20
<b>TICKETING</b>	<b>7</b>	<b>ARENA EQUIPMENT</b>	<b>22</b>
TICKETMASTER	7	ADDITIONAL EQUIPMENT	22
BOX OFFICE	7	SET UP STAFF	22
		LAUNDRY FACILITIES	22
<b>QUICK FACTS</b>	<b>8</b>	<b>ARENA INVENTORY</b>	<b>23</b>
<b>LOADING</b>	<b>8</b>	CHAIRS	23
LOCATION	8	TABLES	23
LOADING	8	RISERS	23
ELEVATORS	8	BARRICADES	23
<b>SECTIONS</b>	<b>9</b>	<b>STAGING</b>	<b>23</b>
SECTION MAP	9	STAGE SPECIFICATIONS	23
SECTION CAPACITIES	10		
<b>BACK OF HOUSE</b>	<b>11</b>	<b>POLICIES &amp; GUIDELINES</b>	<b>24</b>
ROOMS	11	EVENT STAFFING	24
BACK OF HOUSE PLAN	12	PRODUCTION LABOR	24
		SIGNAGE	24
<b>POWER</b>	<b>13</b>	SPONSORSHIPS	24
ELECTRICAL SUPPLY	13	FOOD & BEVERAGE	25
		PYROTECHNICS	25
<b>INTERNET</b>	<b>13</b>	CONFETTI	25
INTERNET CONNECTIVITY	13		
<b>LIGHTING</b>	<b>13</b>	<b>ABOUT THE BJCC</b>	<b>26</b>
HOUSE LIGHTING	13		
<b>AUDIO</b>	<b>14</b>		
HOUSE SOUND SYSTEM	14		



# LEGACY ARENA

AT THE BJCC

Welcome to Legacy Arena at the BJCC. The newly modernized 18,000-capacity arena stands ten-stories high and hosts national and international touring concerts, productions, and a variety of sporting events each year. The arena has a curtaining system that allows the space to scale to a 6,200-capacity theater and is available for private events of all types.

*It's nice*  
TO HAVE YOU IN  
**BIRMINGHAM**



# STAFF DIRECTORY

## DIRECTOR OF EVENTS

Bobby Breedlove

[bobby.breedlove@bjcc.org](mailto:bobby.breedlove@bjcc.org)

205.623.9589

## ARENA PRODUCTION MANAGER

Stacey Walton

[stacey.walton@bjcc.org](mailto:stacey.walton@bjcc.org)

205.234.0662

## EVENT MANAGER

Erik Jones

[erik.jones@bjcc.org](mailto:erik.jones@bjcc.org)

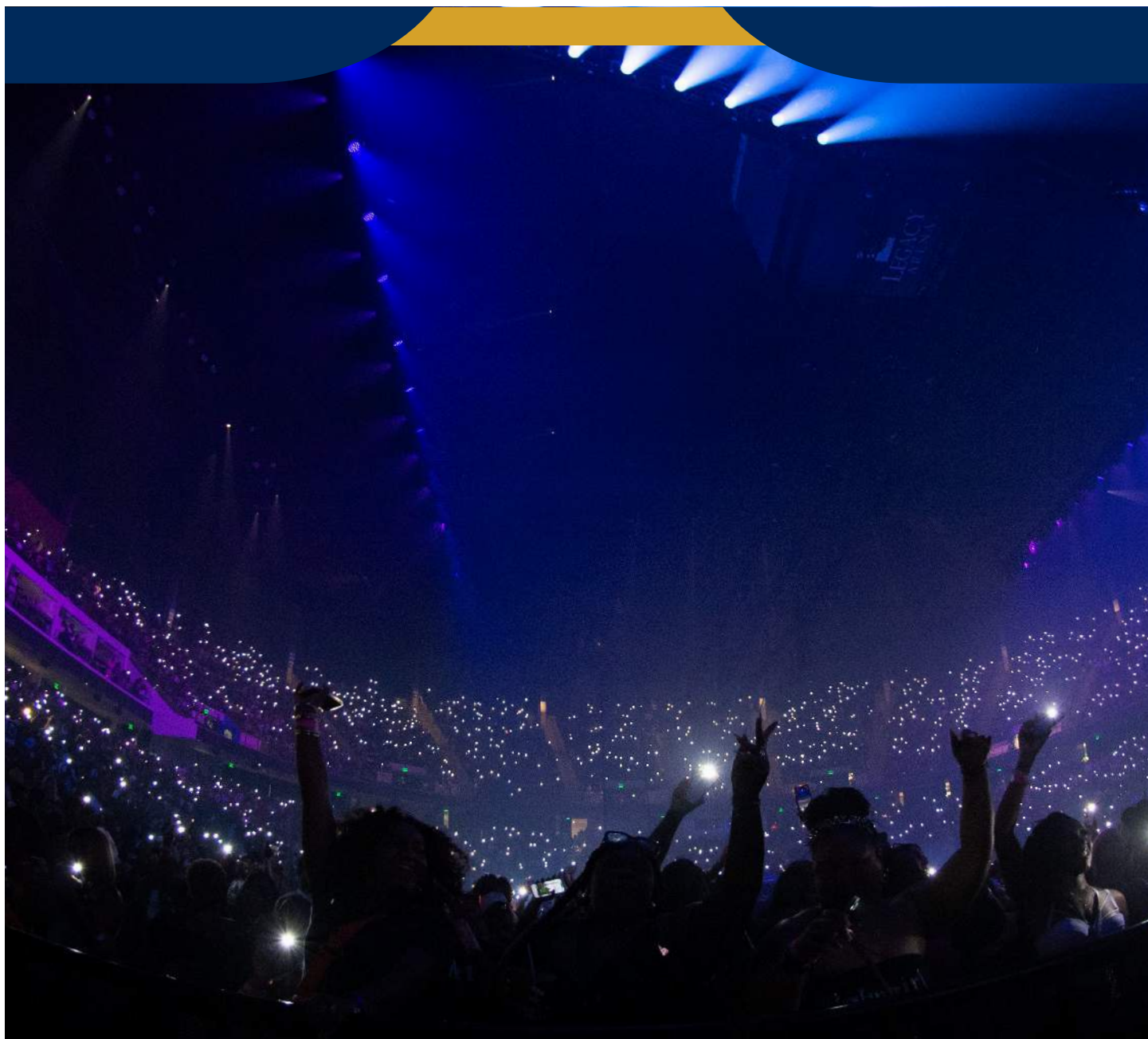
205.917.9789

## SR DIRECTOR OF SALES & MARKETING

Nicole Klein

[nicole.klein@bjcc.org](mailto:nicole.klein@bjcc.org)

205.458.8441



# ADDRESS

## MAILING ADDRESS:

2100 Richard Arrington Jr. Blvd N, Birmingham, AL 35203 ([Map It](#))

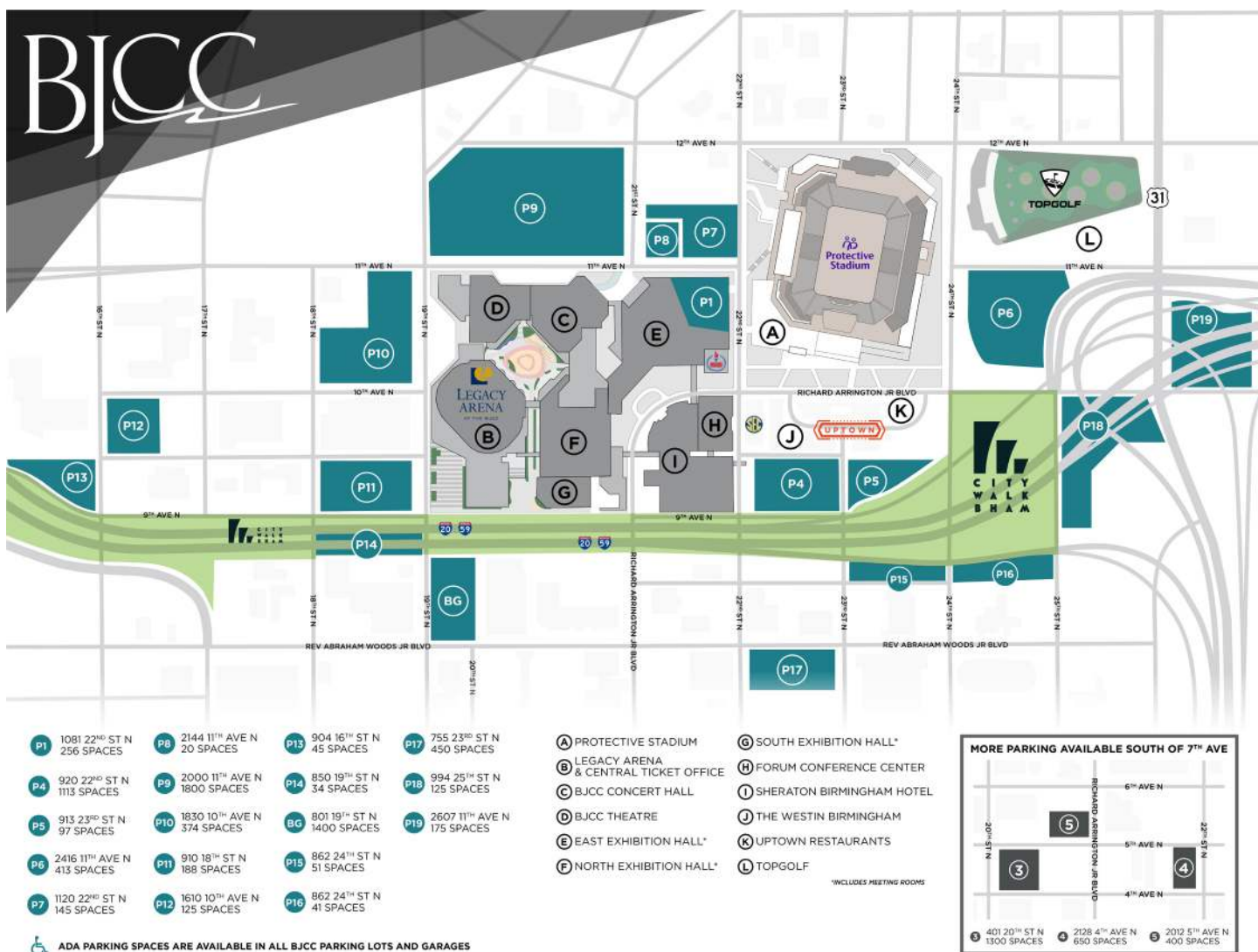
## SHIPPING ADDRESS:

Legacy Arena Dock #7  
Attn: Bobby Breedlove  
2100 Richard Arrington Jr. Blvd. N, Birmingham, AL 35203



# PARKING

A true downtown and urban venue, Legacy Arena parking is a mix of BJCC owned parking areas and facilities as well as local partners used to supplement major crowds. Please consult with your Event Manager early in your planning process to account for standard guest parking as well as oversized vehicles (trucks, buses, RVs, etc.) parking, shuttle services, and traffic modifications or road closures as may be necessitated by the size of your event.





# TICKETING

## TICKETMASTER:

Legacy Arena exclusively uses Ticketmaster as its ticketing platform for all complex events. No other ticketing company or third party can be used to sell tickets on behalf of the Licensee through outlets, internet, phone or otherwise. Ticketed events held at Legacy Arena will utilize Ticketmaster and be serviced by the BJCC Box Office staff including all applicable fees as set forth in the rental agreement.

## BOX OFFICE:

The BJCC maintains a Central Ticket Office for daily in-person sales at Legacy Arena located at 1001 19th Street N, Birmingham, AL 35203.



**CENTRAL TICKET OFFICE**

# QUICK FACTS

## GENERAL CONTRACTOR:

**BL Harbert**

## PRINCIPAL ARCHITECT:

**Geddes, Brecher, Qualls, Cunningham** for original design.  
**Populous** was principal architect for Arena renovation project completed in 2021.

## GROUNDBREAKING:

Originally completed in 1976.  
\$125M modernization / renovation project in 2021.

# LOADING

## LOCATION:

The Legacy Arena loading dock can be accessed via 19th St. N.

## LOADING:

With close proximity to the stage, Legacy Arena has (1) internal dock with (2) bays available, and (1) external dock that is covered with (4) bays available and automatic dock levelers. These docks will provide you with drive on floor access (27" w x 13" h).

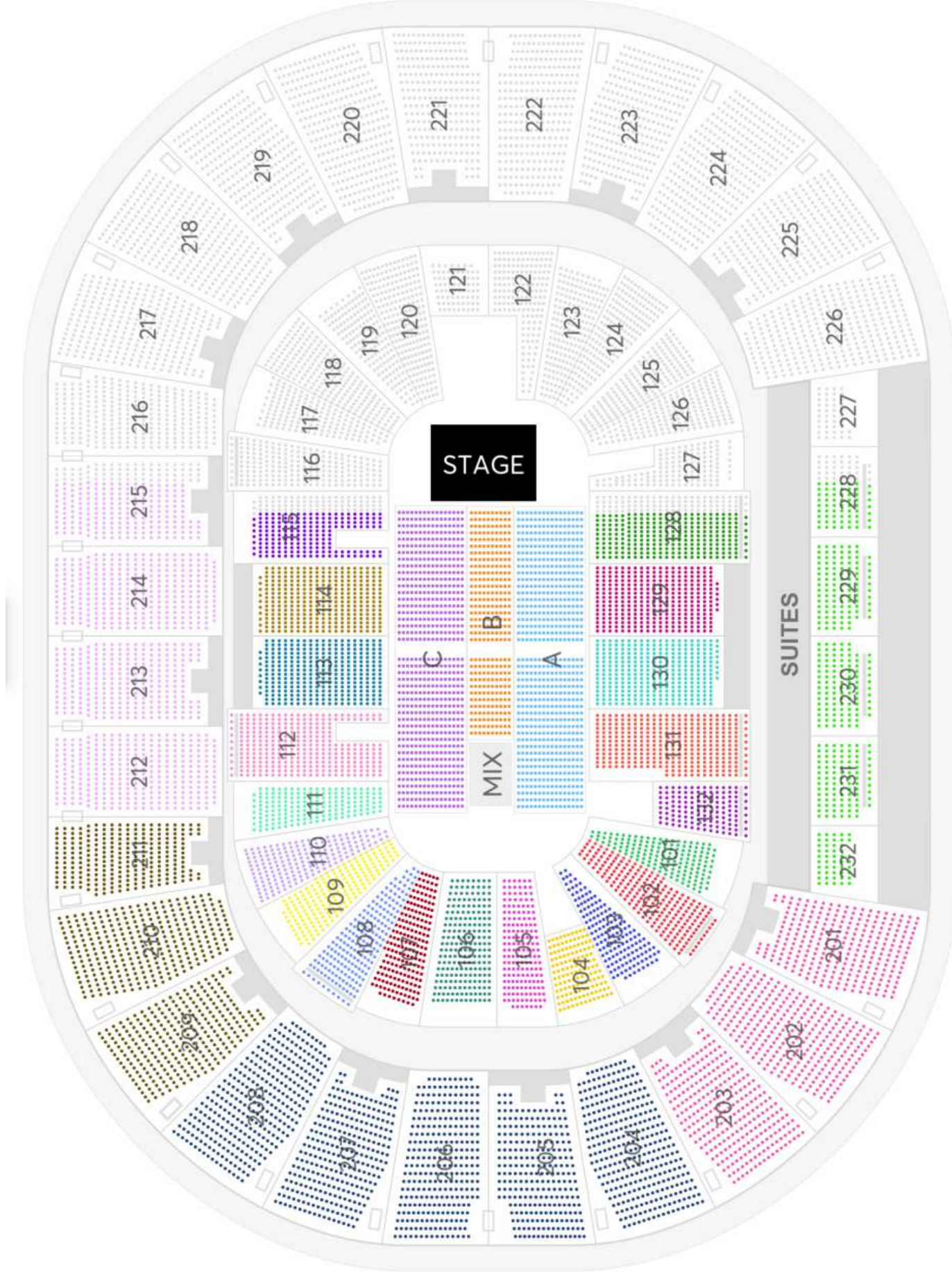
## ELEVATORS:

Freight and Service elevators are available at the loading dock.

11'5" L  
7'11" H  
7'11" W  
8000 lb capacity



SECTION MAP



# SECTION CAPACITIES

Price Level	Base Price	Total Capacity	Kills	Sellable Capacity	Total
FL A	-	688	0	688	\$0.00
FL B	-	320	0	320	\$0.00
FL C	-	688	0	688	\$0.00
101	-	155	0	155	\$0.00
102	-	229	0	229	\$0.00
103	-	155	0	155	\$0.00
104	-	134	0	134	\$0.00
105	-	168	0	168	\$0.00
106	-	209	0	209	\$0.00
107	-	187	0	187	\$0.00
108	-	196	0	196	\$0.00
109	-	187	0	187	\$0.00
110	-	188	0	188	\$0.00
111	-	175	0	175	\$0.00
112	-	315	0	315	\$0.00
113	-	312	0	312	\$0.00
114	-	314	0	314	\$0.00
115	-	187	0	187	\$0.00
128	-	255	0	255	\$0.00
129	-	310	0	310	\$0.00
130	-	312	0	312	\$0.00
131	-	333	0	333	\$0.00
132	-	132	0	132	\$0.00
Suites	-	411	0	411	\$0.00
LSIDUP	-	900	0	900	\$0.00
CTR UP	-	1,477	0	1,477	\$0.00
RR UP	-	865	0	865	\$0.00
RL UP	-	1,097	0	1,097	\$0.00
Unassigned Seats	-	6,232	0	-	-
<b>Total</b>	<b>Avg / seat: \$0.00</b>	<b>17,131</b>	<b>0</b>	<b>10,899</b>	<b>\$0.00</b>

Diagram above represents seating configuration in the round.  
Additional configuration diagrams available on request.

180\* Endstage capacity:  
240\* Endstage capacity:  
270\* Endstage capacity:



# BACK OF HOUSE

Featuring all of the square footage needed for any major touring production, Legacy Arena has ample back of house space for multi-team or multi-day events.

## ROOMS:

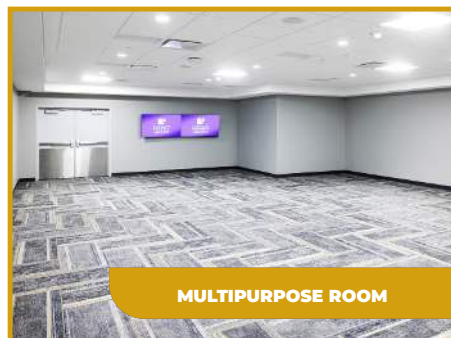
Two (2) star dressing rooms, equipped with private bathroom and showers.

Four (4) small dressing rooms, equipped with private bathroom and showers.

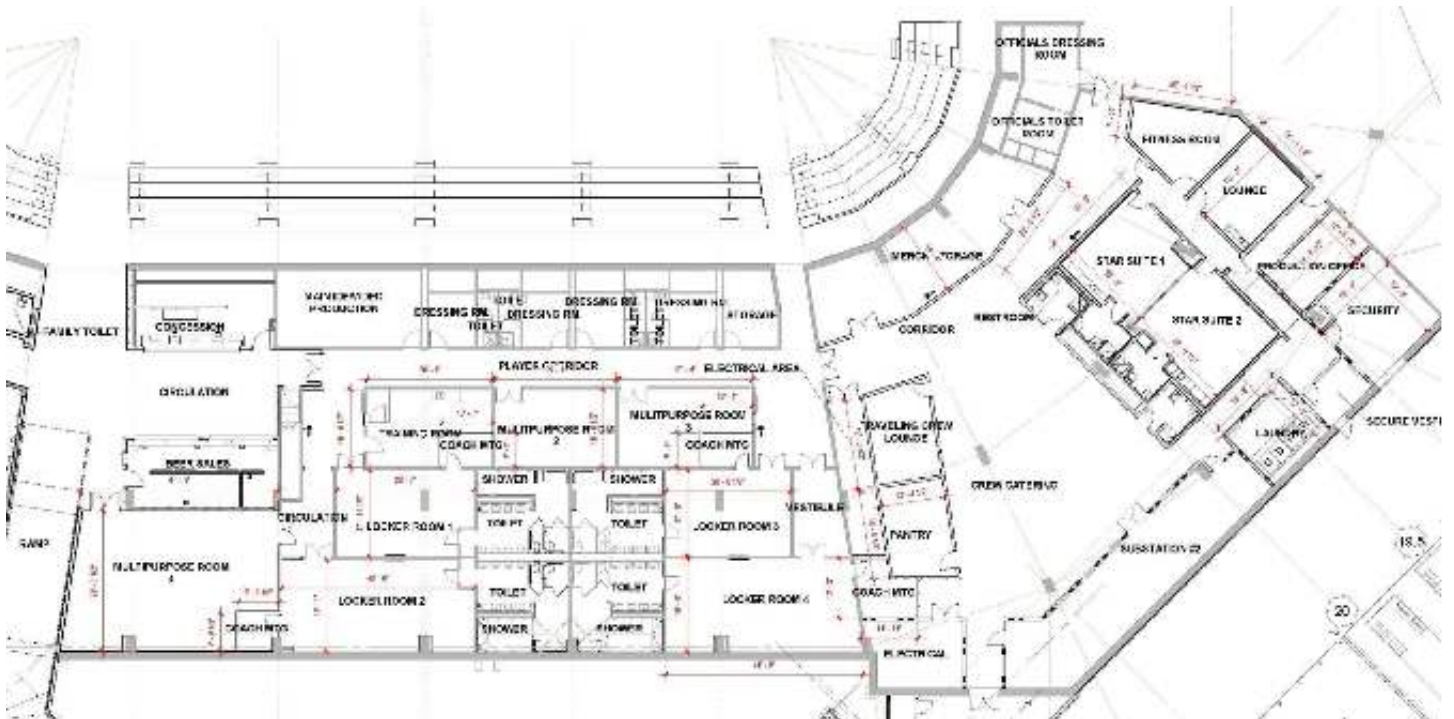
Four (4) large team locker rooms, with bathroom and showers.

Four (4) multipurpose rooms.

One (1) large crew catering area with pantry and crew lounge.



## BACK OF HOUSE PLAN





# TECHNICAL INFORMATION

After complete modernization in 2021, Legacy Arena's core technical systems were designed to utilize the latest technology and to give event production and broadcast staff the tools they need to create an amazing fan experience.

## POWER

### ELECTRICAL SUPPLY:

Legacy Arena has been wired with 3 phase, (2) 600 amp, (2) 400 amp, and (7) 200 amp panels. All panels are individually transformer isolated. The 600 amp panels are equipped with double lugs to accept bare wire tails. All other panels are equipped with camlocks. Distance to USE Center is approximately 70' for a typical End Stage setup. 3 Phase, 200 amp available for catering upon request. Inside the pantry at catering there is (1) 200 amp 3PH 4 Wire. Externally, there is also (4) 200 amp 3PH 4 Wire, (2) 50 amp 125/250v, (2) 30 amp 125v, and (8) 20 amp 120v quad boxes on the exterior wall facing the loading dock. (3) Bus pedestals with each pedestal containing (1) 30 amp 125v, (1) 50 amp 125/250v, and (1) 20 amp 120v quad box on loading wall facing 19th St.

## INTERNET

### INTERNET CONNECTIVITY:

Legacy Arena provides in-house information technology and telecommunications support. The BJCC's infrastructure supports connection speeds up to one gigabyte. Services can be accessed via CAT6 UTP and wireless connectivity exists throughout the complex.

## LIGHTING

### HOUSE LIGHTING:

Floor and Bowl lighting are covered by (136) EPHESUS Lumadapt 8 Sports Lighting fixtures. The lights are non-dimmable and are controlled by a PARADIGM pre-set touch panel from the control booth on concourse level. Additional lighting looks and cues may be programmed by scheduling a programming session with our in-house lighting director for an additional fee.

# AUDIO

## HOUSE SOUND SYSTEM:

Legacy Arena is outfitted with (8) centrally hung line arrays to serve the BOWL area.

### **Each array consist of:**

- (14) RCF HDL-28A HIGH/MID speakers
- (3) RCF HDL-36AS SUB speakers

There are (64) RCF C3108-126 full range speakers hung to cover the UNDER BALCONY.

The Audio system is run by a YAMAHA CL-5 mixing console.

### **Outboard Gear Includes:**

- RIO 3224-D2 I/O Rack
- (3) Shure ULXD-4D, G50 band, handheld/Lavalier microphone systems
- (6) Shure PSM900 InEar Monitor systems

Audio can be patched throughout the Arena using (7) JBT access boxes each consisting of (12) XLR Male/Female patch points

### **Box Locations:**

- (1) TVRP JBT box located on outside loading dock
- (2) Concourse JBT boxes – NORTH and SOUTH
- (4) Arena Floor JBT boxes – NORTH, SOUTH, EAST, and WEST – located behind the retractable seats

# BROADCAST

## FIBER CONNECTIVITY:

Our recently upgraded fiber connectivity helps to complete the video package in the Arena. We have 48 single-strand single-mode fiber running from the production truck dock to our main hub where it can be distributed around the Arena. Another 24 fibers from the production trucks feed directly into our video booth. The concourse has a JBT box at center court on either side, each with 24 fiber connections and matching boxes at floor level with 12 fiber patches each.

## VIDEO FEED:

All videos from in-house production or video village can be fed to any of the dressing rooms, locker rooms, suites, and the concourse. With over 130 monitors throughout the building in our IPTV system, we can send your event to as many or as few rooms as requested. Your crew or talent can tune into 55 different channels to watch any entertainment or sporting event while in the venue.

# PRODUCTION

## CURTAINING SYSTEM:

Legacy Arena has a fully automated upper level masking system, that is deployed in (8) distinct segments. For curtain breakdown, contact event management.

Legacy Arena has a house black curtain that is 80' wide x 60' tall and is hung via truss and motors. The curtain must be hung prior to show load in by IATSE 78 and show will incur labor fees for install & strike.

## RIGGING:

**FLOOR TO LOW STEEL:** 74'  
**FLOOR TO HIGH STEEL:** 94'

The maximum total load distributed to each roof truss shall be limited as follows:

TRUSS MARK	MAXIMUM LOAD
Truss T - 1	30,000 lbs.
Truss T - 1A	36,000 lbs.
Truss T - 1 (Reinforced)	60,000 lbs.
Truss T - 2	30,000 lbs.
Truss T - 2 (Reinforced)	60,000 lbs.
Truss T - 3	25,000 lbs.
Truss T - 4	20,000 lbs.



The symbol above indicates the top chord panel point of the roof truss, as shown on Drawing R - 1. The total vertical load at any of the pnts shall not exceed 5,000 lbs.

All rigging loads shall be applied to the exisiting roof trusses at the Truss Panel Points only. Do not apply any rigging loads to the roof joists, roof deck, catwalks, truss bracing or any other secondary members.

Any rigging loads that fall outside of these guidelines should be specifically reviewed by a structural engineer.

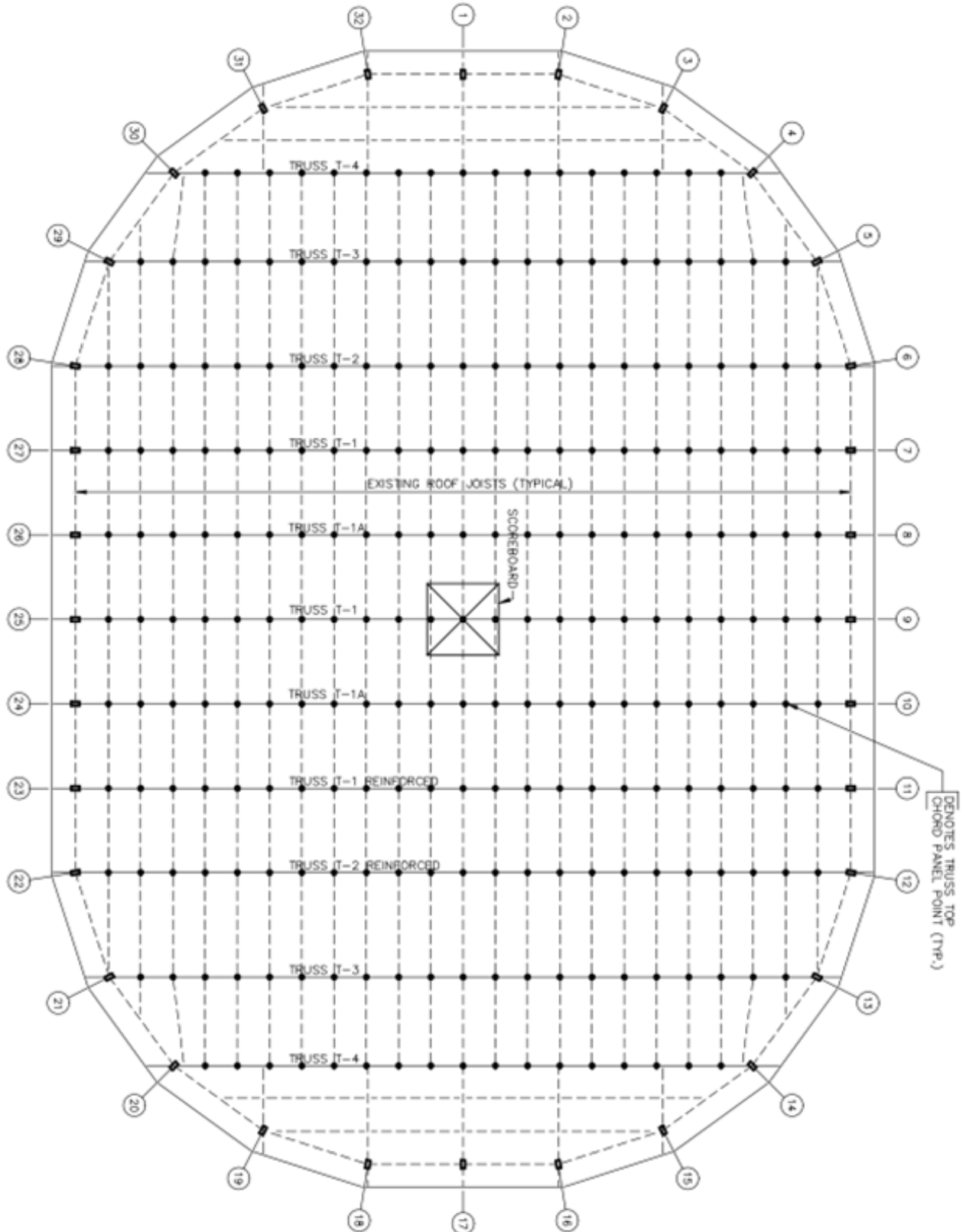
Any rigging loads that fall outside of these guidelines should be specifically reviewed by a structural engineer.

The maximum vertical load at any point on the supplemental framing beams shall not exceed 30,000 lbs. The maximum total load distributed on any member shall not exceed 36,000 lbs.

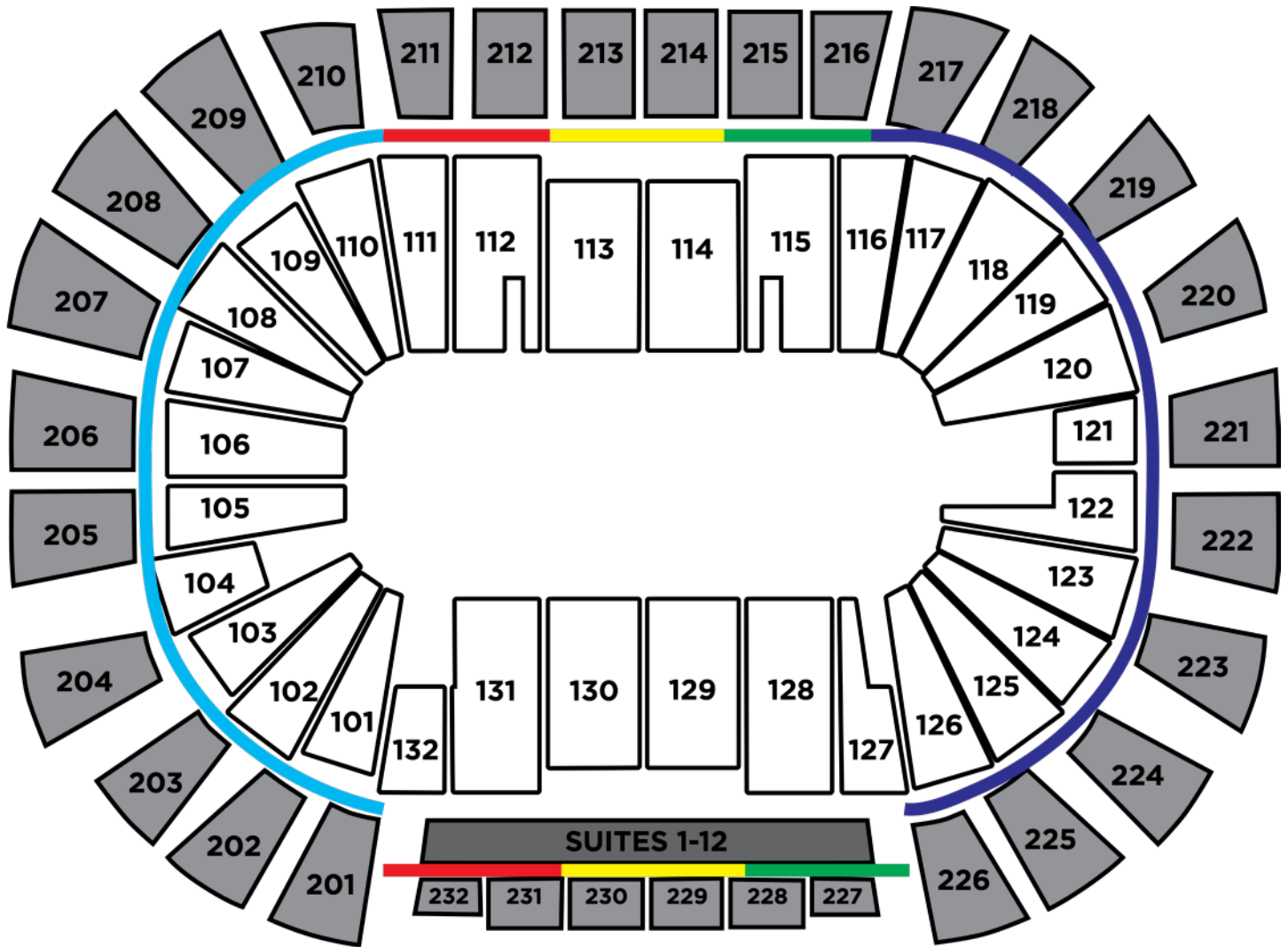


## ROOF FRAMING LAYOUT

We do not have a grid, but lateral beams. The lines running downstage on the drawing are not for rigging. All beams for rigging are marked as "Truss T - XX"

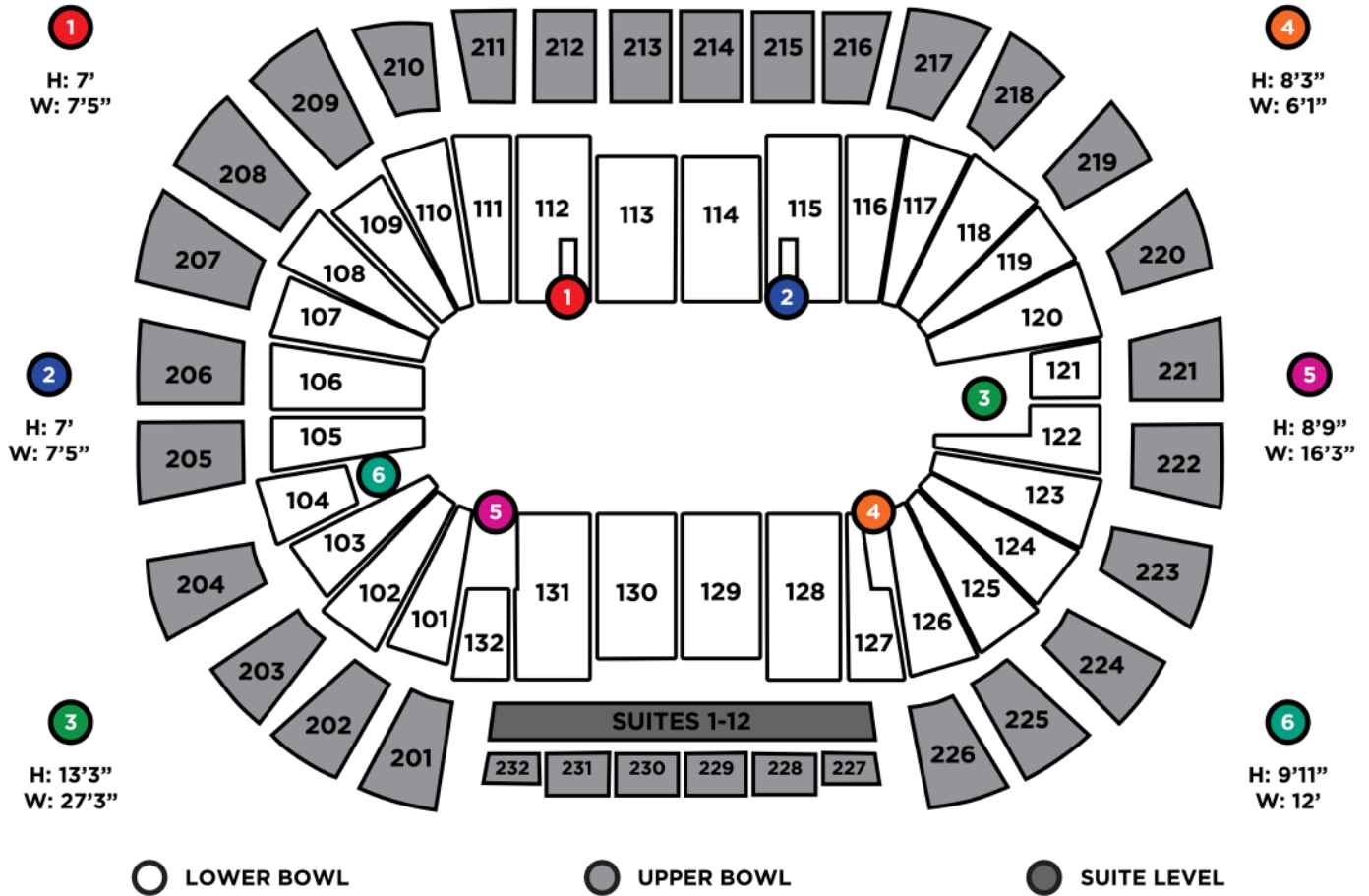


## UPPER BOWL CURTAIN SEGMENTS



- LOWER BOWL
- UPPER BOWL
- SUITE LEVEL
- SEGMENT A
- SEGMENT B
- SEGMENT C
- SEGMENT D
- SEGMENT E

## ARENA FLOOR ACCESS



# DIGITAL MEDIA

Legacy Arena is outfitted with full HD Daktronics center hung video boards and 360 ribbon boards.

## CONTENT SPECIFICATIONS:

- COLOR MODE: RGB
- RESOLUTION: 72 dpi
- STATIC FILES: PNG, BMG, GIF, OR JPG
- ANIMATED FILES: MP4 w/ H.264
- PIXEL ASPECT RATIO: Square Pixels
- FRAME RATE: 30 fps
- AUDIO: AAC Audio



## DISPLAY SPECIFICATIONS:

Main Fullscreen

MAIN FULL SCREEN  
720w x 480h

CENTERHUNG VIDEO  
Main Video & Score

MAIN 16:9 TOP  
720w x 405h

MAIN SCORE 720w x 75h

Main Centered Video

MAIN 16:9 CENTER  
760w x 238h

CENTERHUNG RING  
Option 1 - Single Side

448w x 64h

Option 2 - All Sides

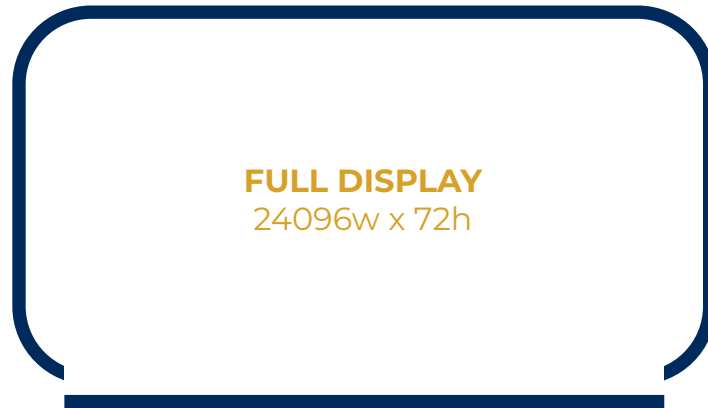
1792w x 64h

NOTE: Each side of the ring is 448w; this is where corners are located in the design.



## RIBBON DISPLAY

Option 1 - Full Takeover



*\*Based on the configuration of this system, content rendered for the full display will need to be striped as shown in the diagram below:*

**FIRST STRIPE:** 12,048w x 72h

**SECOND STRIPE:** 12,048w x 72h

## Ribbon Zones



**SIDES:** 4944w x 72h

**CORNERS:** 2786w x 72h

**ENDZONES:** 1534w x 72h

## SCORER'S TABLE

1296w X 96h

## ARM

768w x 192h

# ARENA EQUIPMENT

## ADDITIONAL EQUIPMENT:

In addition to fixed furniture, fixtures, and equipment in place throughout Legacy Arena, additional tables (8' rectangle, 6' rectangle, 5' round), chairs, risers, and staging can be made available to support your event. Please develop a comprehensive list of your needs and your Event Manager can advise you on applicable pricing and availability for in-house options and provide local vendor recommendations for anything not on-site.

## SET UP STAFF:

Arena staff will set up all BJCC equipment rented for your event. If you require a same day reset in a particular space, an additional labor charge will be applied.

## LAUNDRY FACILITIES:

Legacy Arena is equipped with (2) commercial washers and dryers that are available for show or event use.



# ARENA INVENTORY

## CHAIRS:

**Dark Blue Padded Folding Chairs:** 2,200

## TABLES:

**8' Rectangular Tables:** 100

**6' Rectangular Tables:** 25

**5' Round Tables:** 50

## RISERS:

**Risers 4' x 8' Fold & Roll:** 25 (*Can adjust to 16" or 24" in height*)

## BARRICADES:

**Mojo Barricade:** Available upon request, incurs a fee for set up / breakdown.

**Bike Rack:** 240 linear ft. of rack available upon request.

# STAGING

## STAGE SPECIFICATIONS:

The stage in Legacy Arena is built to suit using 4' x 8' decks that have an adjustable height between 4' - 6'. (28) 8' x 8' Stage Frame units are available, and railings can be provided. Stage weight capacity is 125 lbs. per sq. ft.

Legacy Arena's stage decks are manufactured by Stage Right.

# **POLICIES & GUIDELINES**

Legacy Arena, as a facility within the Birmingham-Jefferson Convention Complex (BJCC), is owned and managed by the Birmingham-Jefferson Civic Center Authority.

While your Event Manager is available to clarify any specific policies and guidelines, some of our most referenced policies are listed below.

## **EVENT STAFFING:**

The BJCC strives to maintain a friendly and safe environment for its guests. To achieve this level of service, minimum staffing levels are required for both ticketed and non-ticketed events that will be contracted for and supervised by the BJCC. Your Event Manager will work with you to determine the appropriate crowd management staffing model required to conduct a safe and secure event by evaluating event attendance, nature of event, show and venue history. Best Crowd Management is the exclusive provider of crowd management personnel. Fees for staffing are to be considered an event expense and the responsibility of the licensee.

## **PRODUCTION LABOR:**

Licensee, working in coordination and direction of the BJCC, must use labor provided by International Alliance of Theatrical Stage Employees (IATSE) Local 78 for show-related rigging and production needs.

## **SIGNAGE:**

Banners and signs are welcome in our facilities, upon advanced approval from the BJCC. This includes, but is not limited to, exterior, interior, wayfinding, and entrance signage. Permanent facility signs and directional graphics may not be blocked. Signs must be placed on easels and not taped, tacked, or adhered to any other surface. Signage in the common spaces of the BJCC must be professionally printed or computer generated - no hand-written signs are permitted. Signs may not be placed in any complex elevator. Any damage by adhesive materials on floors, walls, or any BJCC property will incur charges. After an event, all posted signage must be removed, or a removal charge will be incurred.

## **SPONSORSHIPS:**

All sponsorships including signage, giveaways and other promotional items displayed or handed out on Legacy Arena property must be coordinated with your Event Manager. Due to some building exclusivities, certain sponsors may be precluded from displays inside the arena and on building property. Please contact your Event Manager for the most up-to-date list of Legacy Arena protected advertisers and partnerships.



## **FOOD & BEVERAGE:**

All food and beverage to be consumed within Legacy Arena including catering, concessions, and alcohol service must be coordinated through the BJCC's exclusive partner, Sodexo Live!. Sodexo Live!, as the alcoholic beverage license holder, must enforce all applicable laws and codes in association with the sale and consumption of alcoholic beverages and during activities serving alcoholic beverages, uniformed law enforcement officers, at the expense of licensee, must be on-site. Permission to distribute or dispense, without charge, samples of food, beverages, refreshments, sundries related to an event, etc. shall be arranged in advance and be clearly stated and identified as "further terms and conditions" to the License Agreement.

## **PYROTECHNICS:**

All pyrotechnics displays must be approved by the BJCC and then permitted through Birmingham Fire and Rescue and State of Alabama as required. Birmingham Fire and Rescue's Fire Marshall division can be reached at (205) 250-7540 for any questions regarding the permitting processes, licenses, and fees required.

## **CONFETTI:**

With advanced review and approval from the BJCC including the Director of Event Management, confetti may be used. Confetti should be made from a water-soluble paper source and be a minimum of 1" x 1" in size. Absolutely no mylar material or glitter shall be used in any confetti display. A minimum clean-up charge shall be assessed for the use of confetti.

# ABOUT THE BJCC

Located in the heart of the Uptown Entertainment District, the Birmingham Jefferson Convention Complex is more than just a venue for conventions and trade shows, it is a magnet for the local community, too. As one of the city's premier gathering places, it is where Best in Class sporting events, concerts, Broadway shows, local meetings, galas, educational seminars, cultural, religious, and social events take place on a daily basis.

On the BJCC campus, you will find everything you need for your event, starting with an array of top-notch facilities, 791 guest rooms in our Westin Birmingham and Sheraton Birmingham Hotels, convenient dining and entertainment as well as helpful event staff and a host of specialized services. The complex offers over 420,000 sq. ft. of flexible meeting space, 88 breakouts and 18 unique venues all in one walkable location.

2100 Richard Arrington Junior Blvd. N  
Birmingham, AL 35203

Visit the BJCC's website for more information by clicking [here](#).



## EAST EXHIBITION HALL

92,234 sq. ft. Exhibition Space  
22 Meeting Rooms  
Largest Room 14,193 sq. ft.  
1850 Capacity

## NORTH EXHIBITION HALL

94,269 sq. ft. Exhibition Space  
11 Meeting Rooms  
Largest Room 9,574 sq. ft.  
432 Capacity

## SOUTH EXHIBITION HALL

21,182 sq. ft. Exhibition Space  
10 Meeting Rooms  
Largest Room 14,530 sq. ft.  
1440 Capacity

## THE FORUM CONFERENCE CENTER

3,750 sq. ft. Theater  
12 Meeting Rooms  
Largest Room 7,280 sq. ft.  
480 Capacity

## BJCC CONCERT HALL

2,835 Capacity  
2 chorus rooms and 12 dressing rooms as well as 2 rehearsal areas and a VIP Reception Room.

## BJCC THEATRE

1000 Capacity  
2 rehearsal areas, 7 dressing rooms total, including 2 chorus rooms, 2 star dressing rooms, and 3 other dressing rooms.

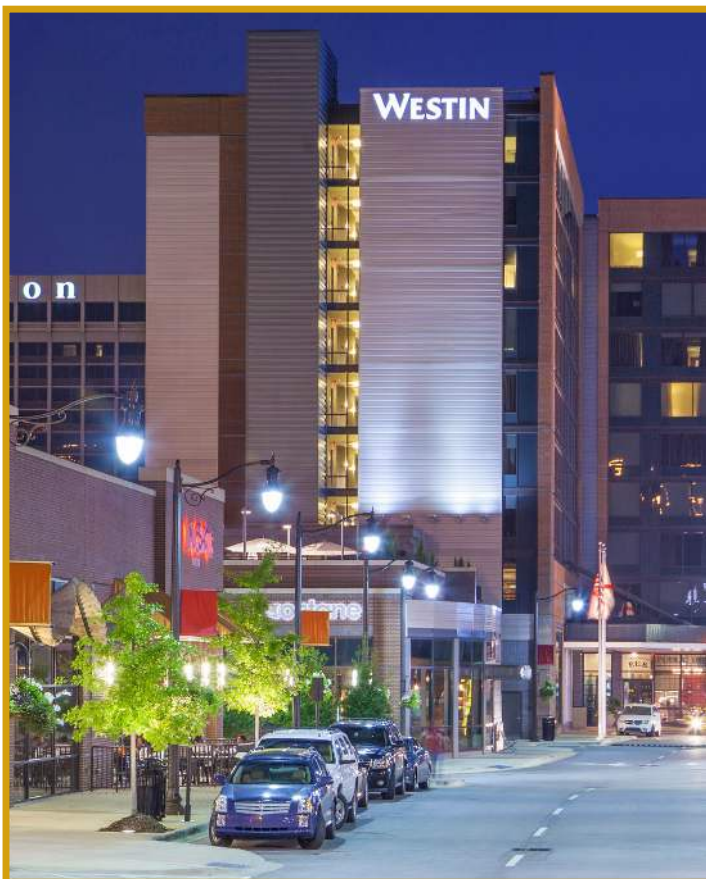


### **SHERATON BIRMINGHAM HOTEL**

2100 Richard Arrington Jr. Blvd. N  
Birmingham, AL 25203

Sheraton Birmingham Hotel is a luxurious property with modern amenities and spacious, newly renovated guest rooms. Showcasing nearly 43,000 sq. ft. of event space, a total of 20 function rooms are available for private rental.

Visit the Sheraton's website for more information by clicking [here](#).



### **THE WESTIN BIRMINGHAM**

2212 Richard Arrington Jr. Blvd. N  
Birmingham, AL 35203

The Westin Birmingham is a AAA 4-Diamond approved hotel. Offering 294 contemporary and stylish sleeping rooms, the Westin can accommodate up to 340 meeting attendees in a theater configuration. State-of-the-art technology and high-speed internet access is available in all meeting rooms.

Visit the Westin's website for more information by clicking [here](#).





## PROTECTIVE STADIUM

1101 22nd St. North  
Birmingham, AL 35203

The 45,000-capacity multi-purpose, open air stadium hosts large concerts, private functions, and a variety of sporting events year round. The 11,500 sq. ft. Stadium Club with views of the playing field and 6,400 sq. ft. Recruiting Room looking out to the Uptown Entertainment District are also available for rental. The Stadium is an ideal venue to host kick-off/closing events and VIP experiences.



## CITY WALK BHAM

Covering 31 acres and 10 city blocks, City Walk offers 10 unique outdoor spaces that will accommodate almost any type of event. The venue includes recreational sports facilities, an amphitheater and classroom and a variety of open flexible spaces. City Walk BHAM is an ideal outdoor venue for kick off and closing parties, receptions, team building or other corporate gatherings.

Visit City Walk BHAM website for more information by clicking [here](#).