

PROTECTIVE STADIUM

TECHNICAL GUIDE



BIRMINGHAM, ALABAMA

TABLE OF CONTENTS

Click on header to jump to page.

STAFF DIRECTORY	4	LIGHTING	16
		HOUSE LIGHTING	16
ADDRESS	5	DIGITAL MEDIA	17
MAILING ADDRESS	5	CONTENT SPECIFICATIONS	17
SHIPPING ADDRESS	5	DISPLAY SPECIFICATIONS	17
PARKING	6	AUDIO	19
PARKING CAPACITY	6	HOUSE SOUND SYSTEM	19
ON-SITE PARKING	6	AUDIO & VISUAL CONNECTIVITY	19
PARKING MAP	6		
TICKETING	7	PRODUCTION	19
TICKETMASTER	7	CAMERA DECKS	19
BOX OFFICE	7	BROADCAST TABLING & TV	20
		TRUCK PARKING	
QUICK FACTS	8	TV CABLE SCHEDULE	21
		IN-HOUSE PRODUCTION	23
LOADING	9	POLICIES & GUIDELINES	25
LOCATION	9	EVENT STAFFING	25
LOGISTICS	9	PRODUCTION LABOR	25
ELEVATORS	9	SIGNAGE	25
		SPONSORSHIPS	25
CAPACITY	9	FOOD & BEVERAGE	26
SEATING	9	PYROTECHNICS	26
SECTIONS	9	CONFETTI	26
ADDITIONAL SEATING	9	DRONES	26
PREMIUM SEATING	10		
BACK OF HOUSE	11	MEETING SPACES	27
LOCKER ROOMS	11	STADIUM CLUB	28
PRODUCTION SPACE	11	RECRUITING ROOM	29
		POLICIES & GUIDELINES	30
KEY PLANS	12	ABOUT THE BJCC	32
100 LEVEL: WEST	12		
100 LEVEL: SOUTH	13		
100 LEVEL: EAST	14		
PRESS BOX	15		
POWER	16		
ELECTRICAL SUPPLY	16		
INTERNET	16		
INTERNET CONNECTIVITY	16		



Protective Stadium

The multi-purpose, open air stadium hosts 55,000-capacity events like large concerts and private functions along with a variety of 45,000-capacity sporting events year round. The 11,500 sq. ft. Stadium Club with views of the playing field and 6,400 sq. ft. Recruiting Room looking out to the heart of the Uptown Entertainment District are also available for rental. The Stadium is an ideal venue to host kick-off/closing events and VIP experiences.

It's nice
TO HAVE YOU IN
BIRMINGHAM

STAFF DIRECTORY

DIRECTOR OF STADIUM EVENTS

Michael McGreevey

michael.mcgreevey@bjcc.org

205.440.8348

EVENT MANAGER

Jackson Seawell

jackson.seawell@bjcc.org

205.458.8632

SR DIRECTOR OF SALES & MARKETING

Nicole Klein

nicole.klein@bjcc.org

205.458.8441



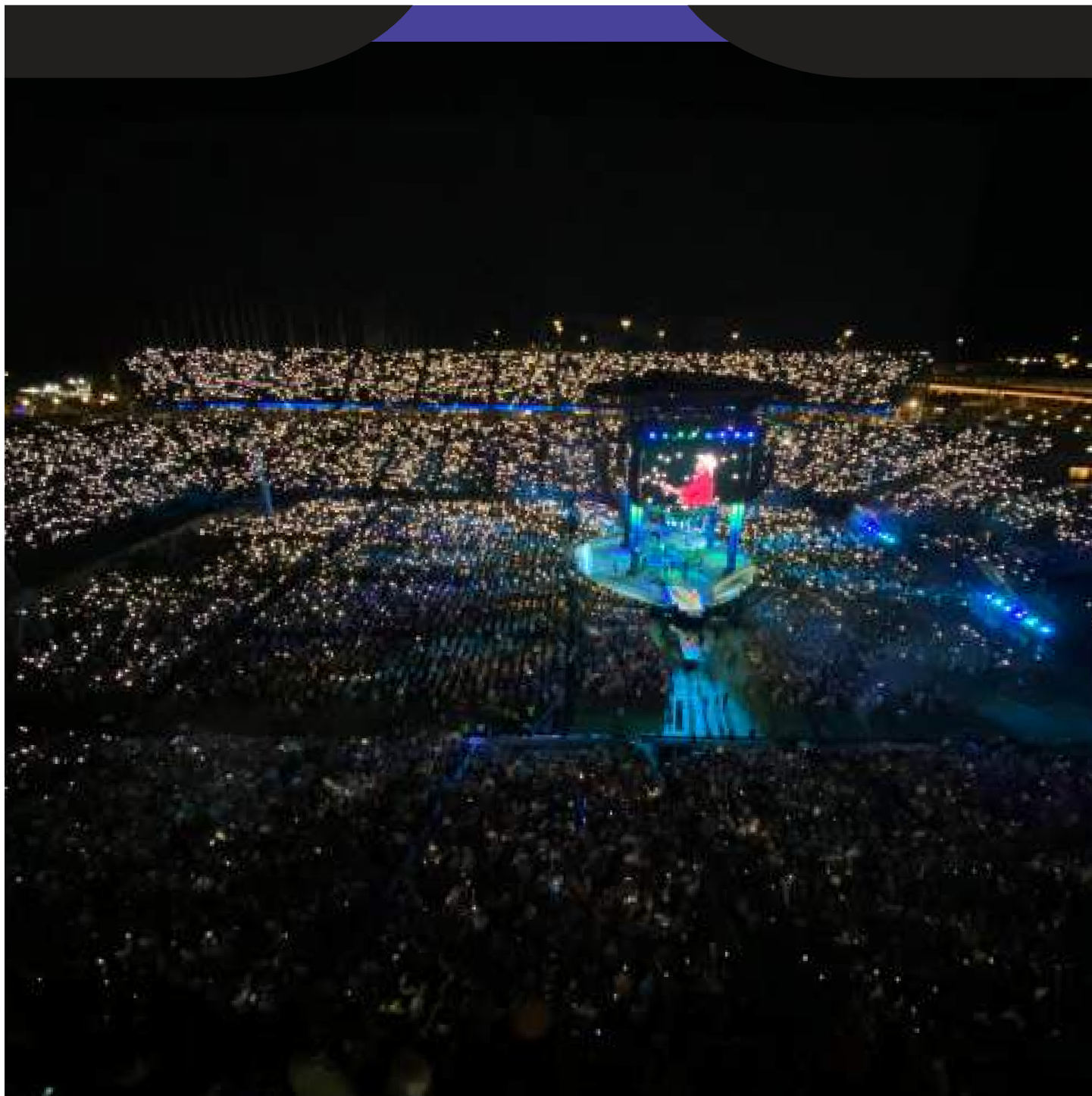
ADDRESS

MAILING ADDRESS

1101 22nd Street North, Birmingham, AL 35203 ([Map It](#))

SHIPPING ADDRESS

Protective Stadium Dock #8
Attn: Contact, Organization
1101 22nd Street North, Birmingham, AL 35203



A true downtown and urban venue, Protective Stadium parking is a mix of BJCC owned parking areas and facilities as well as local partners used to supplement major crowds. Please consult with your Event Manager early in your planning process to account for standard guest parking as well as oversized vehicles (trucks, buses, RVs, etc.) parking, shuttle services, and traffic modifications or road closures as may be necessitated by the size of your event.



Located inside two gated loading docks.

Standard Car Spaces	9
Truck High Loading Bays	1
Bus Slips (45ft)	4

TICKETING

TICKETMASTER:

Protective Stadium exclusively uses Ticketmaster as its ticketing platform for all complex events. No other ticketing company or third party can be used to sell tickets on behalf of the Licensee through outlets, internet, phone or otherwise. Ticketed events held at Protective Stadium will be serviced by the BJCC Box Office staff and include all applicable fees as set forth in the rental agreement.

BOX OFFICE:

There are two permanent box offices at Protective Stadium situated at the South Gate and Northeast Gate. The South box office has a total of twelve (12) windows, and the Northeast box office has a total of four (4) windows to be utilized for points of sale, will call, or ticket resolution. The BJCC maintains a Central Ticket Office for daily in-person sales at Legacy Arena located at 1898 9th Ave. N, Birmingham, AL 35203.



STADIUM TICKET OFFICE

QUICK FACTS

GENERAL CONTRACTOR:

Brasfield and Gorrie (Birmingham, AL)

TOTAL CONSTRUCTION COST:

\$215 Million

PRINCIPAL ARCHITECT:

Populous (Kansas City, MO)

GROUND BREAKING:

July 2019

CURRENT TENANTS:

UAB Blazers Football, United Football League - Birmingham Stallions, United Soccer League - Birmingham Legion FC (USL)

First Event: UAB Football, October 2, 2021

First Concert: Garth Brooks, June 4, 2022

Since October 2, 2021, over 700,000 fans have visited, with the stadium carrying over 140 live television broadcasts.

LOADING

LOCATION:

Protective Stadium is outfitted with two (2) gated loading dock areas (West and East). The West loading dock can be accessed via 22nd St. N, and the East loading dock can be accessed via 24th St. N.

LOGISTICS:

For logistics management, Protective Stadium is outfitted with four (4) truck-high loading bays including leveling systems with three (3) on the West Dock (#8) and one (1) located on the East Dock (#9). The East Loading Dock also includes four (4) bus slips measuring 45 ft. long each to house team buses or other oversized vehicles.

In addition, the BJCC owns a Marshalling yard (approx. 130,000 sq. ft.) at 1301 F L Shuttlesworth Dr., Birmingham, AL 35234, for the parking and storage of large tour buses or production trucks.

ELEVATORS:

Inside, a total of five (5) elevators are in service including three (3) standard passenger elevators, one (1) service elevator, and one (1) freight elevator. Two (2) passenger elevators service the Stadium Club to the suites (400 and 500 levels) and the 600 level, one (1) passenger elevator travels all floors from the Field (100) level to the 600 level along with the service elevator, and the freight elevator runs from the Field (100) level to the main concourse (300) level.

CAPACITY

SEATING:

General Seating

100 Level

200 Level

ADA

Premium Seating

South Field Club

Stadium Club

Suites

TOTAL:

SECTIONS:

38,923 Full Padded Chairbacks:

- East: 124, 125, 126 (1,749)
- South: 112, 113, 114, 115 (321)
- West: 101, 102, 103 (1,692)
- North: NA

2,888 Bleacher w/ Back:

- East: 121, 122, 123 (2,352)
- East: 127, 128, 129 (2,359)
- South: 112, 113, 114, 115 (1,103)
- West: 104, 105, 106 (2,136)
- West: 144, 145, 146 (2,370)
- North: NA

Remaining Sections Standard Bleacher:

- 24,371 seats

ADDITIONAL SEATING:

In addition to fixed seating and standard sports configurations, the 107,870 sq ft. (402.5ft L x 268ft W) of Protective's artificial turf field can be utilized for additional seating in concert/performance settings. Depending on the configuration and size of the stage, Protective Stadium can accommodate roughly up to 11,000 total fans on the field.



PREMIUM SEATING:

Accessed via the dedicated entrance on the West side, Protective Stadium currently features two (2) premium seating options including thirty-four (34) private suites and the 11,569 sq. ft. Stadium Club providing the 1,692 fans seated in sections C101, C102, and C103 shared hospitality space including two bars, built-in reception style furniture, and a nearly 900 sq. ft. modern buffet area for food and beverage service.

18 of 34 private suites reside on the Stadium's 400 level, and 16 are located on the 500 level along with three (3) camera decks. All suites are licensed on multi-year agreements between the BJCC and local partners, and most provide space for 24 total guests to enjoy the best views, private food and beverage via Sodexo Live!, and built-in amenities including double French door refrigerators, lockable storage, and televisions.

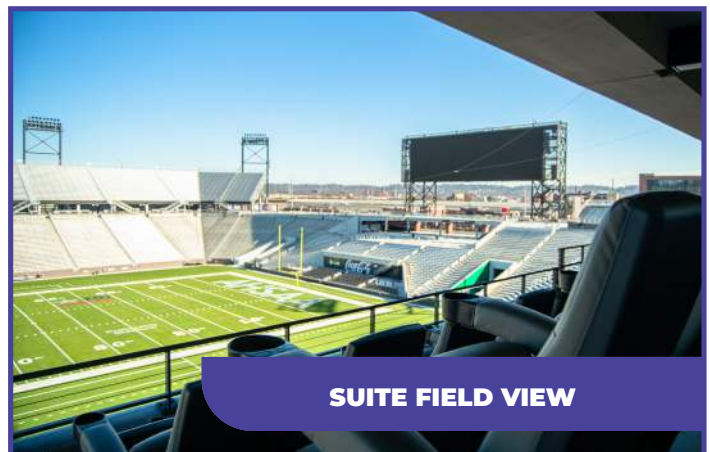
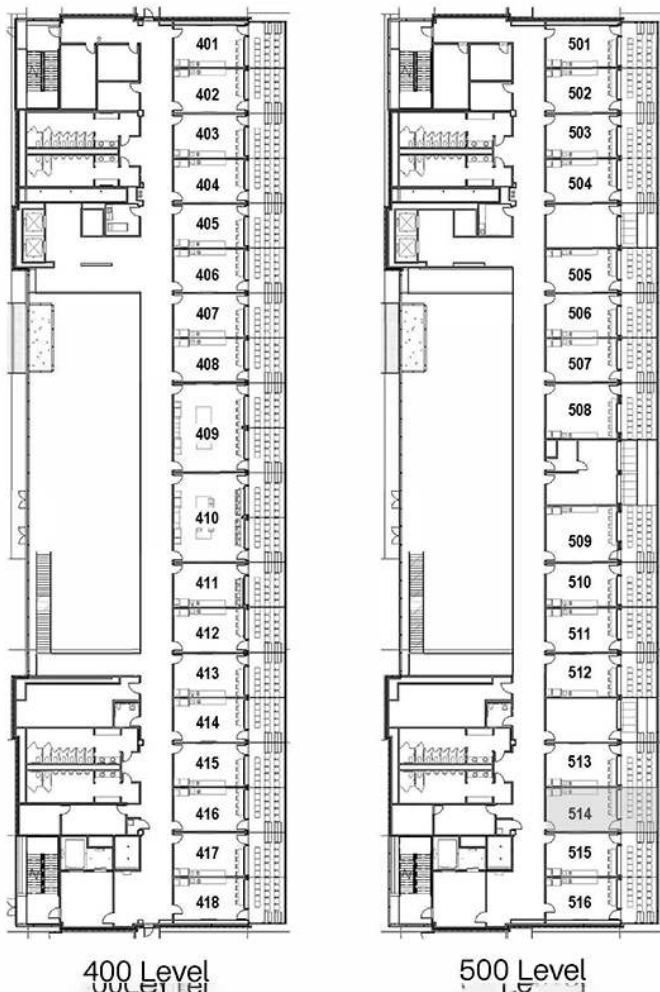
Premium Seating **2,888**

Future South Field Club 324

Stadium Club 1,692

Suites 872

- 34 Suites
- 30 at 24
- 2 at 30
- 2 at 46



BACK OF HOUSE

Featuring all of the square footage needed for the modern event, Protective Stadium has ample back of house spaces for multi-team or multi-day sporting events as well as concert events on the 100 level.

LOCKER ROOMS:

Main Home Locker Room includes 102 Lockers, Equipment Storage Room, Athletic Training Room with Exam and X-Ray rooms, Staff Locker Room with 28 Lockers, restrooms and showers, and multipurpose space.

Permanent UAB Football Locker Room includes 76 Lockers and a Head Coach's office with private restroom for exclusive UAB use along with a staff locker room with 17 lockers.

Main Visiting Team Locker Room includes 91 Lockers, Athletic Training Room with Exam room, staff Locker Room with 27 Lockers, restrooms and showers, and multipurpose space.

Officials Locker Room includes multipurpose meeting space and two (male and female) locker rooms with 8 lockers, restrooms and showers.

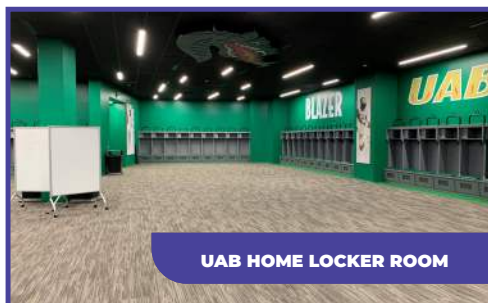
In addition to the locker rooms and supporting spaces, the 100 level also features a UAB branded 6,442 sq. ft. multipurpose meeting and banquet space designed to host pre-game recruiting activities just down the hall from a post-event press conference room and on-field media room.

PRODUCTION SPACE:

On the 600 level of Protective Stadium, events can house media and production operations in the 3-Tiered Media Press Box with seating for 75 including copy room and dining space as well as sixteen (16) total booth spaces for visiting team athletic director, visiting radio, visiting coaches, team filming location, TV broadcast, home radio, home coaches, statisticians, stadium command, clock and scoreboard operators, instant replay, video production, public address and sound, and flex spaces.



GENERIC HOME LOCKER ROOM



UAB HOME LOCKER ROOM



UAB COACHES OFFICE



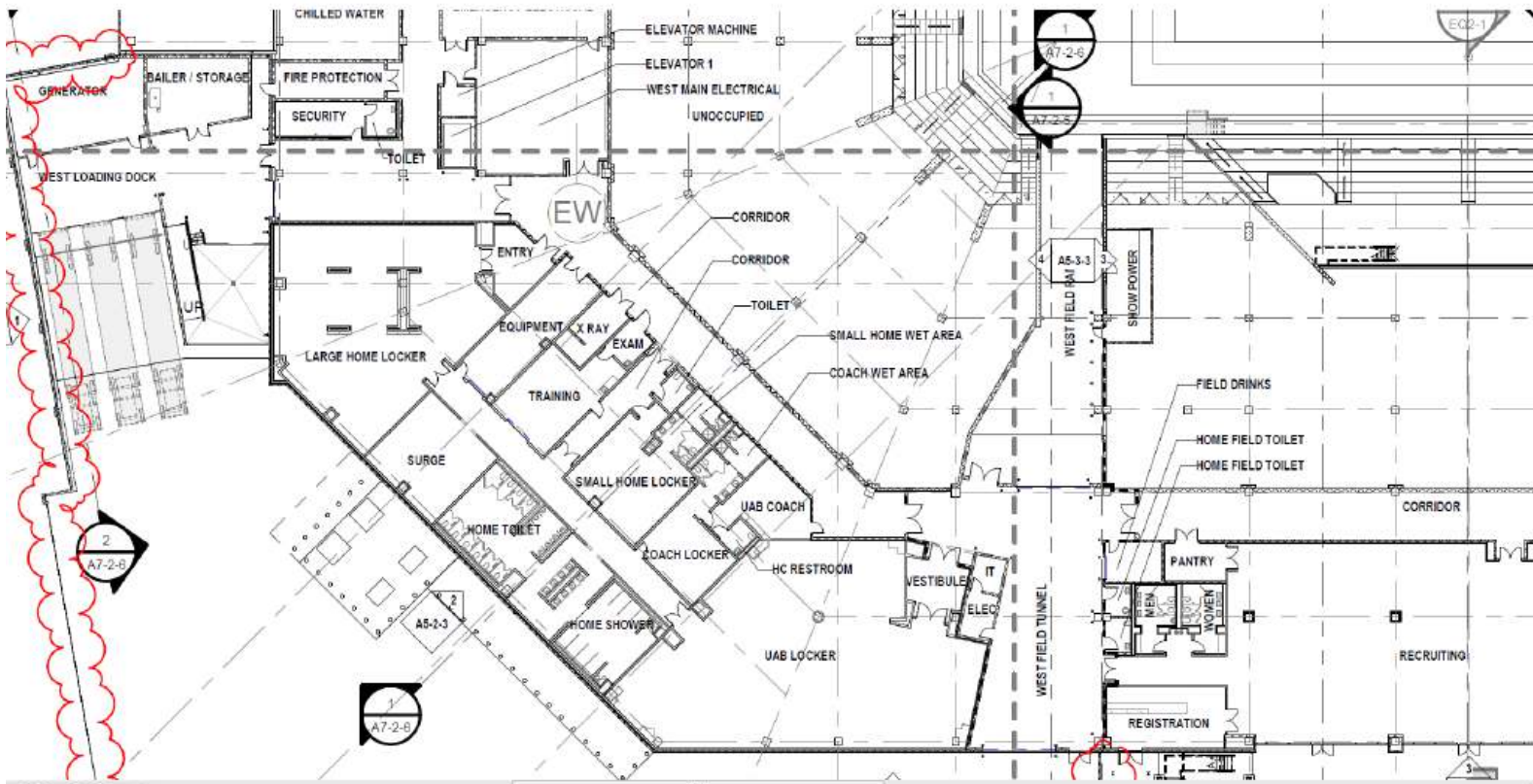
ATHLETIC TRAINING ROOM



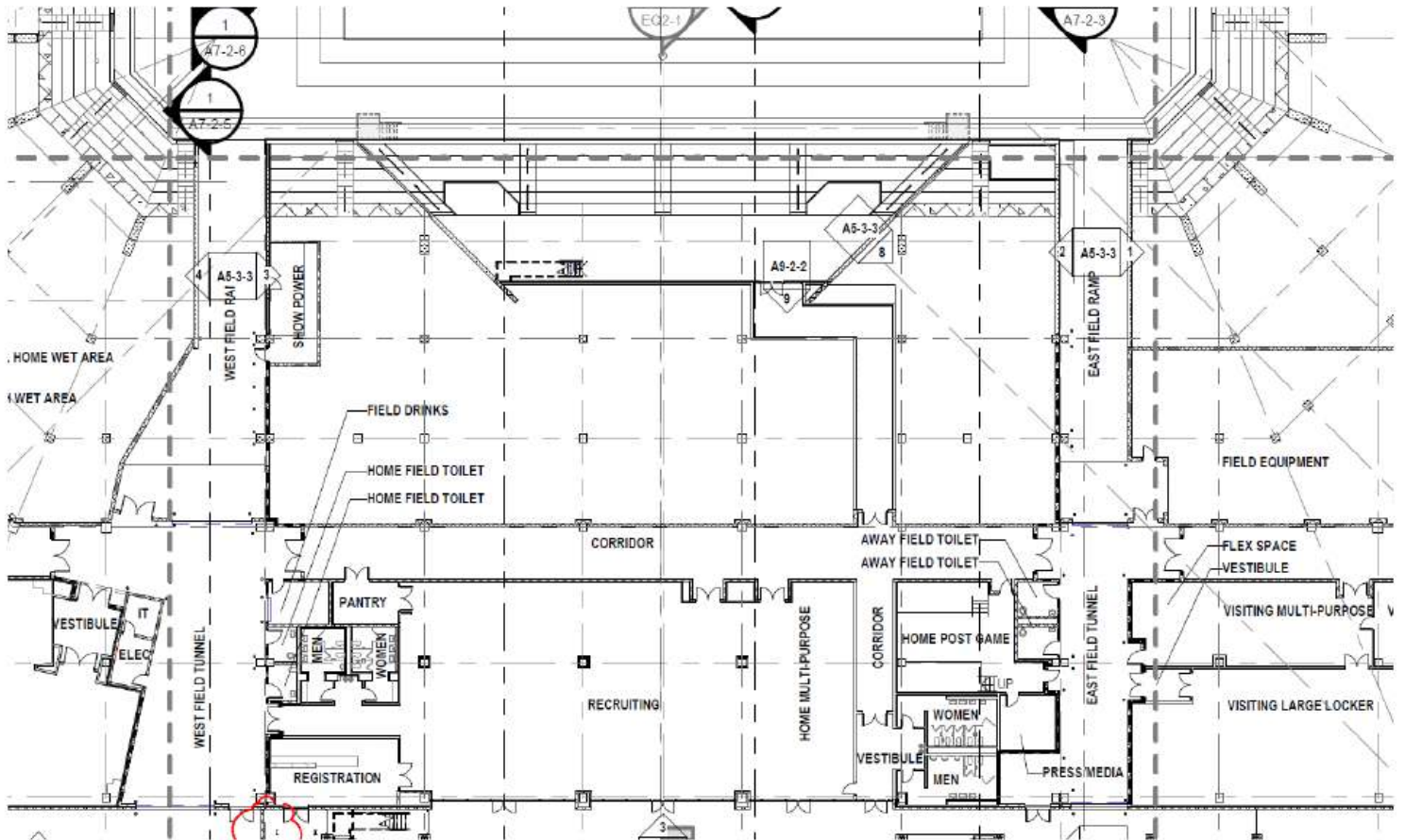
RECRUITING ROOM

KEY PLANS

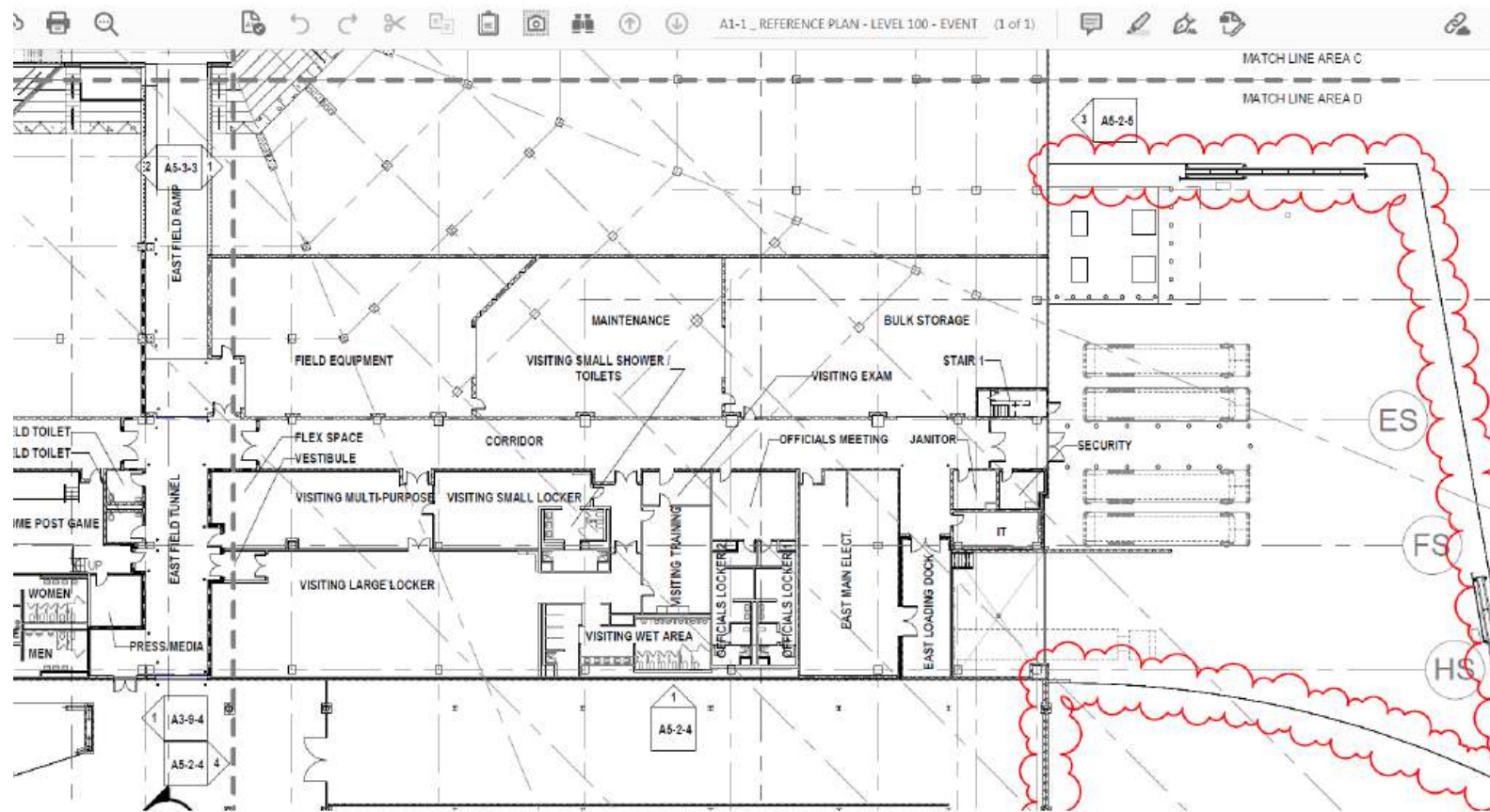
100 LEVEL: WEST



100 LEVEL: SOUTH

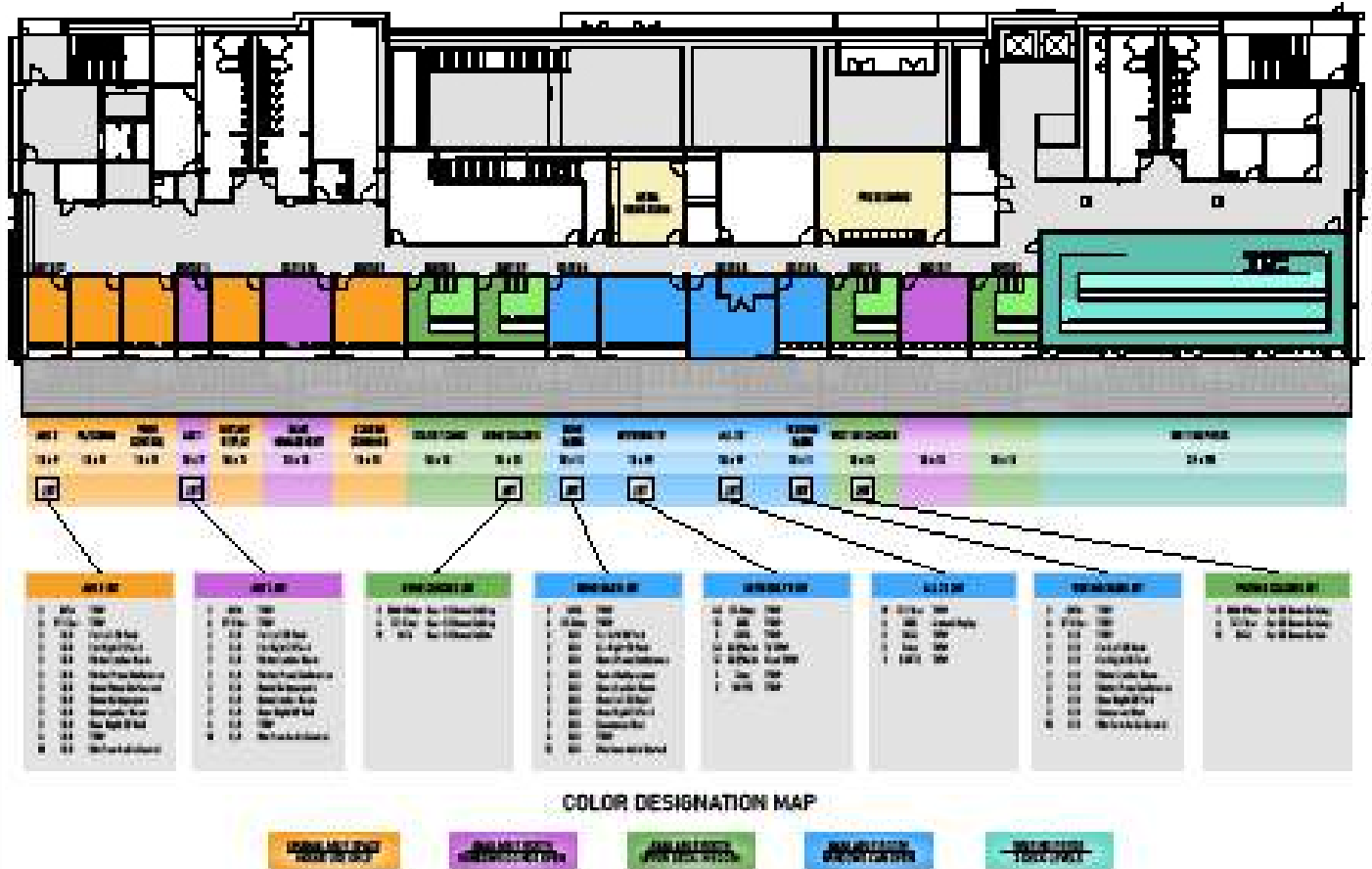


100 LEVEL: EAST



PRESS BOX

Protective Stadium 6th Floor Booth Layout



TECHNICAL INFO

Opened in October of 2021, Protective Stadium's core technical systems were designed to utilize the latest technology and to give event production and broadcast staff the tools they need to create an amazing fan experience.

POWER

ELECTRICAL SUPPLY:

In addition to the ample standard outlets around the venue found in new construction, to supply shore power in a variety of locations, Protective Stadium has been wired with cam lock show power panels on the field with two (2) 200 amp panels and three (3) 100 amp panels on each sideline, two (2) 400 amp panels and four (4) 200 amp panels in the Show Power electrical room just off the West Field Tunnel, and on the West Loading Dock at the TVRP, there are four (4) 200 amp camlock services for production trucks and three (3) 100 amp camlock services for satellite trucks.

INTERNET

INTERNET CONNECTIVITY:

Protective Stadium provides in-house information technology and telecommunications support to all events on the complex. The BJCC's infrastructure supports connection speeds up to one gigabyte. Services can be accessed via CAT6 UTP and wireless connectivity throughout the Stadium, Legacy Arena, meeting rooms and exhibit halls of the complex. Protective Stadium's total facility capacity is 10Gig that can be provisioned as required/requested in the back of house areas on the 100-level and the Stadium Club tower. The Wi-Fi network is not available in the seating bowl and field, but cellular coverage is enhanced through a distributed antenna system installed by AT&T.

LIGHTING

HOUSE LIGHTING:

LED Field lighting was installed during construction by Musco Sports Lighting tuned for football TV broadcast standards with programmable white light sequences for additional fan engagement. Average horizontal foot candles as of July of 2021 were 179.63 with a max of 225 in North End Zone and min of 156 on West Sideline for an average of 179.63 or 1933.52 Lux.

DIGITAL MEDIA

Protective Stadium is outfitted with full HD Daktronics video boards including a main 140ft W x 30ft H video board in the South End Zone and ribbon boards (11) on the East fascia between 100 level and 200 level seating. All scoreboard and clock displays are shown on these videoboards with the exception of the two fixed football play clocks in the North and South End Zones.

CONTENT SPECIFICATIONS:

- COLOR MODE:** RGB
- RESOLUTION:** 72 dpi
- STATIC FILES:** PNG, BMG, GIF, OR JPG
- ANIMATED FILES:** MP4 w/ H.264
- PIXEL ASPECT RATIO:** Square Pixels
- FRAME RATE:** 30 fps
- AUDIO:** AAC Audio



DISPLAY SPECIFICATIONS: MAIN VIDEO DISPLAY OPTION 1 - FOOTBALL SCOREBOARD

LEFT TOP 760w x 238h	CENTER VIDEO 1842w x 1036h	RIGHT TOP 760w x 238h
LEFT WING 760w x 560h		RIGHT WING 760w x 560h
LEFT BOTTOM 760w x 238h		RIGHT BOTTOM 760w x 238h

MAIN VIDEO DISPLAY OPTION 2 - FULL DISPLAY TAKEOVER

CENTER VIDEO 3360w x 1036h

MAIN VIDEO DISPLAY
OPTION 3 - 3 PANELS - NON-FOOTBALL



RIBBON DISPLAY
OPTION 1 - INDIVIDUAL DISPLAYS

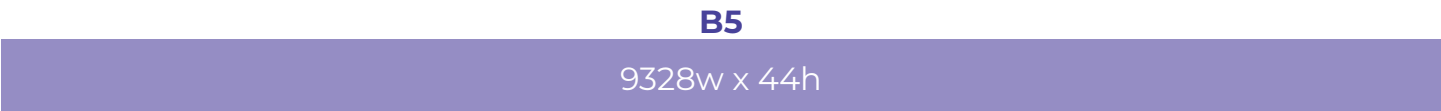


OVERHEAD VIEW



RIBBON DISPLAY
OPTION 2 - ALL DISPLAY TAKEOVER

When designing content that spans the entire length of the ribbon display, do not place any text or logos on the following pixel gap locations. (572, 1144, 2266, 3256, 4256, 5082, 6072, 7062, 8184, 8756)



OVERHEAD VIEW



AUDIO

HOUSE SOUND SYSTEM:

Flanking the main South End Zone video board are the main speakers of Protective Stadium's house sound system. These are made up of 22 speakers and 12 subwoofers with enough power to entertain a 45,000+ audience. The Concourse, Club Lounge and restrooms have Time-Delayed speakers to keep the sound going when you're not in the main bowl. The sound booth is on the 600-level with a Yamaha QL1 mixer and Rio 3224 I/O which are connected to boxes in the bowl, in the 600 level booths, and at our truck dock providing maximum flexibility for any show. This booth also includes Shure wireless microphones and in-ear monitors to complete the package. Additionally, a connected, but standalone system supports the dedicated press conference room on the 100-level for post-event media activities.

AUDIO & VISUAL CONNECTIVITY:

To support a high-level broadcast experience, Protective Stadium partnered with Wrightson, Johnson, Haddon & Williams, Inc. to incorporate thirty (30) JBT box locations throughout the facility to patch audio and video easily including single mode fiber, SMPTE, and Triax connections.

PRODUCTION

CAMERA DECKS:

Located on the 500 Level are (3) Camera Decks to assist with camera setup and filming. Camera Deck 1 is positioned to capture North end of the Stadium. Camera Deck 2 is positioned at midfield. Camera Deck 3 is positioned to capture South end of the Stadium.

High Endzone – Top of Scoreboard in South End Zone. There is a permanent camera deck set back enough from the edge to not require fall protection, but please review with your organization's safety contacts. Note that for sporting events, platform/top of the scoreboard will be shared with both teams, filming staff as well as pyrotechnics staff utilizing close proximity effects from that position. The primary way to haul equipment to top of scoreboard is by hand via the stairwell. There is a small crane hook that can be used; however, it only reaches the base of the scoreboard and not the concourse area.

Low Endzone – TV crews have utilized the North End Zone opposite of the High Endzone in the South. There is not a built-in position in the stands or on field level, broadcasting has brought in staging to set this position. A third party contractor will need to be used to accommodate this need of equipment.

Sideline Cart – Protective Stadium's turf was constructed for FIFA (soccer) width regulations and is 268 ft wide allowing ample room for a sideline cart. Any broadcast that utilizes the cart will need to provide specifications, including weight and tire details, for review. Plan with your event manager to ensure fan safety.

Protective Stadium has been pre-wired based on NCAA Football calling standards. Reference the following pages & broadcast cable schedule for camera and cable per location.

WEST LOADING DOCK TV COMPOUND

TV CABLE SCHEDULE

RADIO CABLE SCHEDULE						
ENCLOSURE TYPE	DESIGNATOR	BOX DESCRIPTION	RADIO - HOME JBT6G4	RADIO - VISITOR JBT6H3	RADIO - AUX BOOTH 1 JBT 6G2	RADIO - AUX BOOTH 2 JBT6G1
			2pr Audio	2pr Audio	2pr Audio	2pr Audio
JBT	1B1	FAR LEFT 30 YARD LINE	1	1	1	1
JBT	1C2	FAR RIGHT 30 YARD LINE RADIO	1	1	1	1
JBT	1D1	VISITING LOCKER ROOM CORRIDOR	0	1	1	1
JBT	1E1	VISITOR PRESS CONFERENCE	0	1	1	1
JBT	1E3	HOME PRESS CONFERENCE	1	0	1	1
JBT	1E4	HOME MULTI PURPOSE ROOM	1	0	1	1
JBT	1F1	HOME LOCKER ROOM CORRIDOR	1	0	1	1
JBT	1G2	NEAR RIGHT 30 YARD LINE RADIO	1	1	1	1
JBT	1H1	NEAR LEFT 30 YARD LINE	1	0	0	0
JBT	3K2	CONCOURSE HOST POSITION	1	1	0	0

IN HOUSE CABLE SCHEDULE				
ENCLOSURE TYPE	DESIGNATOR	BOX DESCRIPTION	PRODUCTION (IN HOUSE) ER102	
			SMPTE 3 CHANNEL	SMPTE TERMINATION
JBT	1B1	FAR LEFT 30 YARD LINE	1	1
JBT	1E3	HOME PRESS CONFERENCE	1	1
JBT	1G1	NEAR RIGHT 30 YARD LINE NETWORK	1	1
JBT	1L2	FAR LOW LEFT ENDZONE	1	1
JBT	1M2	FAR LOW RIGHT ENDZONE	1	1
JBT	5H1	HIGH 50 YARD LINE	1	1
JBT	6E1	HIGH RIGHT ENDZONE / BLIMP	1	1

NOTES:

1. ER-102 LOCATED IN VIDEO SCOREBOARD 06.52.03.
2. COORDINATE CABLING LOCATION IN ER RACK WITH 11 63 50.

[Click here to access the Interactive JBT Guide.](#)

NETWORK BROADCAST CABLE SCHEDULE

ENCLOSURE TYPE	DESIGNATOR	BOX LABEL	NETWORK TV									NOTES
			AUDIO PR	COAX	DT12 FEMALE	DT12 MALE	SMFO	SMPT 3 CHANNEL	SMPT 3 TERMINATION	TRIAx	UTP	
ER	102	IN-HOUSE INTERCONNECT RACK	6	0	0	0	48	2	6	0	0	SMPT 3 PLUG AT TV TRUCK DOCK//SMPT 3 SOCKET END AT IN-HOUSE RACK
JBT	1B1	FAR LEFT 30 YARD LINE	6	5	0	0	12	1	1	2	0	
JBT	1C1	FAR RIGHT 30 YARD LINE NETWORK	6	0	0	0	12	1	1	2	0	
JBT	1D1	VISITING LOCKER ROOM CORRIDOR	0	0	1	0	12	1	1	1	3	
JBT	1E1	VISITOR PRESS CONFERENCE	6	0	0	0	6	1	1	1	0	
JBT	1E2	VISITOR ENTERANCE TUNNEL	2	0	0	0	12	1	1	1	2	
JBT	1E3	HOME PRESS CONFERENCE	6	0	0	0	6	1	1	1	0	
JBT	1E4	HOME MULTI PURPOSE ROOM	0	0	1	0	12	1	1	1	0	
JBT	1E5	HOME ENTERANCE TUNNEL	2	0	0	0	12	1	1	1	2	
JBT	1F1	HOME LOCKER ROOM CORRIDOR	0	0	1	0	12	1	1	1	3	
JBT	1G1	NEAR RIGHT 30 YARD LINE NETWORK	0	0	1	0	12	1	1	2	0	
JBT	1H1	NEAR LEFT 30 YARD LINE	0	5	1	0	24	1	1	2	0	
JBT	1L1	NEAR LOW LEFT ENDZONE	6	0	0	0	12	1	1	1	0	
JBT	1L2	FAR LOW LEFT ENDZONE	6	0	0	0	12	1	1	1	0	
JBT	1M1	NEAR LOW RIGHT ENDZONE	6	0	0	0	12	1	1	1	0	
JBT	1M2	FAR LOW RIGHT ENDZONE	6	0	0	0	12	1	1	1	0	
JBT	3C1	CONCOURSE MIDFIELD REVERSE	0	0	0	0	6	1	1	1	0	
JBT	3J1	LEFT SLASH	0	0	0	0	6	1	1	1	0	
JBT	3K1	LEFT HIGH ENDZONE	0	0	1	0	12	1	1	1	0	
JBT	3K2	CONCOURSE HOST POSITION	0	0	1	0	24	1	2	1	2	
JBT	5G1	HIGH RIGHT 20 YARD LINE	6	0	0	0	6	1	2	1	2	
JBT	5H1	HIGH 50 YARD LINE	6	0	0	0	12	1	3	2	2	
JBT	5H2	HIGH LEFT 20 YARD LINE	6	0	0	0	6	1	2	1	2	
JBT	6E1	HIGH RIGHT ENDZONE / BLIMP	6	0	0	0	12	1	1	1	2	
JBT	6G1	AUX BOOTH 2	4	0	0	0	6	0	0	0	2	
JBT	6G2	AUX BOOTH 1	4	0	0	0	6	0	0	0	2	
JBT	6G4	HOME RADIO BOOTH	4	0	0	0	6	0	0	0	2	
JBT	6G5	TV ANNOUNCE BOOTH	0	10	2	1	48	1	2	1	2	
JBT	6H1	ALL 22	0	0	0	0	12	1	1	2	2	
JBT	6H2	VISITING RADIO BOOTH	4	0	0	0	6	0	0	0	2	
NOTES: ED	P1	SATELLITE PEDESTAL	6	5	0	0	12	0	0	0	2	
CABLE TERMINATED IN UNIDIRECTIONAL ATTEN. ATTEN 20 DB 50 OHM												

NOTES: ED 1. ER-102 CABLING TERMINATES IN VIDEO SCOREBOARD 06.52.03.
2. COORDINATE CABLING LOCATION IN ER RACK WITH 11 63 50.

BROADCAST BOX SCHEDULE

ENCLOSURE TYPE	DESIGNATOR	PLAN ENCLOSURE LOCATION	BOX LABEL	MANUFACTURER	MODEL SERIES	HEIGHT	WIDTH	DEPTH	CABLE PASS THROUGH	DOOR	DRIp SHIELD	ENCLOSURE FINISH	ENCLOSURE MOUNTING	MOUNTING DESCRIPTION	PEDESTAL MOUNT AC QUAD BOXES
JBC	1C1	EAST MIDFIELD GRIDLINE 16	FAR 50 YARD LINE GAME CABLING	BULLOCH	AV-RP	1" - 10"	1" - 10"	1" - 1"	CPT	X	DS	SS	S	SURFACE	
JBC	1G1	EAST MIDFIELD	NEAR 50 YARD LINE GAME CABLING	BULLOCH	AV-RP	1" - 10"	1" - 10"	1" - 1"	CPT	X	DS	SS	S	SURFACE	
JBT	1B1	NE 30 YARD LINE	FAR LEFT 30 YARD LINE	BULLOCH	AV-RP	1" - 10"	1" - 10"	1" - 1"	CPT	X	DS	SS	S	SURFACE	
JBT	1C1	SE 30 YARD LINE	FAR RIGHT 30 YARD LINE NETWORK	BULLOCH	AV-RP	1" - 10"	1" - 10"	1" - 1"	CPT	X	DS	SS	S	SURFACE	
JBT	1C2	SE 30 YARD LINE	FAR RIGHT 30 YARD LINE RADIO	BULLOCH	AV-RP	1" - 10"	1" - 10"	1" - 1"	CPT	X	DS	SS	S	SURFACE	
JBT	1D1	VESTIBULE 01.29.06	VISITING LOCKER ROOM CORRIDOR	BULLOCH	AV-RP	1" - 10"	1" - 10"	1" - 1"	CPT	SD	DS	SS	F	FLUSH	
JBT	1E1	FLEX SPACE 01.31.02	VISITOR PRESS CONFERENCE	BULLOCH	AV-RP	1" - 10"	1" - 10"	1" - 1"	CPT	X	DS	SS	S	SURFACE	
JBT	1E2	EAST FIELD RAMP 01.35.01	VISITOR ENTERANCE TUNNEL	BULLOCH	AV-RP	1" - 10"	1" - 10"	1" - 1"	CPT	SD	DS	SS	F	FLUSH	
JBT	1E3	HOME POST GAME 01.35.05	HOME PRESS CONFERENCE	BULLOCH	AV-RP	1" - 10"	1" - 10"	1" - 1"	CPT	X	DS	SS	SF	SEMI-FLUSH	
JBT	1E4	HOME MULTI-PURPOSE 01.36.04	HOME MULTI PURPOSE ROOM	BULLOCH	AV-RP	1" - 10"	1" - 10"	1" - 1"	CPT	X	DS	SS	S	SURFACE	
JBT	1E5	WEST FIELD RAMP 01.41.01	HOME ENTERANCE TUNNEL	BULLOCH	AV-RP	1" - 10"	1" - 10"	1" - 1"	CPT	SD	DS	SS	F	FLUSH	
JBT	1F1	CORRIDOR 01.46.01	HOME LOCKER ROOM CORRIDOR	BULLOCH	AV-RP	1" - 10"	1" - 10"	1" - 1"	CPT	SD	DS	SS	F	FLUSH	
JBT	1G1	SW 30 YARD LINE	NEAR RIGHT 30 YARD LINE NETWORK	BULLOCH	AV-RP	2" - 5"	1" - 10"	1" - 1"	CPT	X	DS	SS	S	SURFACE	
JBT	1G2	SW 30 YARD LINE	NEAR RIGHT 30 YARD LINE RADIO	BULLOCH	AV-RP	1" - 10"	1" - 10"	1" - 1"	CPT	X	DS	SS	S	SURFACE	
JBT	1H1	NE 30 YARD LINE	NEAR LEFT 30 YARD LINE	BULLOCH	AV-RP	2" - 5"	1" - 10"	1" - 1"	CPT	X	DS	SS	S	SURFACE	
JBT	1L1	NW ENDZONE CAMERA PLATFORM	NEAR LOW LEFT ENDZONE	BULLOCH	AV-RP	1" - 10"	1" - 10"	1" - 1"	CPT	X	DS	SS	S	SURFACE	
JBT	1L2	NE ENDZONE CAMERA PLATFORM	FAR LOW LEFT ENDZONE	BULLOCH	AV-RP	1" - 10"	1" - 10"	1" - 1"	CPT	X	DS	SS	S	SURFACE	
JBT	1M1	SW ENDZONE CAMERA PLATFORM	NEAR LOW RIGHT ENDZONE	BULLOCH	AV-RP	1" - 10"	1" - 10"	1" - 1"	CPT	X	DS	SS	S	SURFACE	
JBT	1M2	SE ENDZONE CAMERA PLATFORM	FAR LOW RIGHT ENDZONE	BULLOCH	AV-RP	1" - 10"	1" - 10"	1" - 1"	CPT	X	DS	SS	S	SURFACE	
JBT	3C1	EAST CONCOURSE MIDFIELD	CONCOURSE MIDFIELD REVERSE	BULLOCH	AV-RP	1" - 10"	1" - 10"	1" - 1"	CPT	SD	DS	SS	PM	PEDESTAL	1
JBT	3J1	CONCOURSE LEVEL NW CORNER	LEFT SLASH	BULLOCH	AV-RP	1" - 10"	1" - 10"	1" - 1"	CPT	SD	DS	SS	F	FLUSH	
JBT	3K1	CONCOURSE LEVEL NORTH ENDZONE	LEFT HIGH ENDZONE	BULLOCH	AV-RP	1" - 10"	1" - 10"	1" - 1"	CPT	SD	DS	SS	PM	PEDESTAL	1
JBT	3K2	CONCOURSE LEVEL NW CORNER	CONCOURSE HOST POSITION	BULLOCH	AV-RP	1" - 10"	1" - 10"	1" - 1"	CPT	SD	DS	SS	PM	PEDESTAL	1
JBT	5G1	CAMERA DECK 1181	HIGH RIGHT 20 YARD LINE	BULLOCH	AV-RP	1" - 10"	1" - 10"	1" - 1"	CPT	X	DS	SS	S	SURFACE	
JBT	5H1	CAMERA DECK 1180	HIGH 50 YARD LINE	BULLOCH	AV-RP	1" - 10"	1" - 10"	1" - 1"	CPT	X	DS	SS	S	SURFACE	
JBT	5H2	CAMERA DECK 1182	HIGH LEFT 20 YARD LINE	BULLOCH	AV-RP	1" - 10"	1" - 10"	1" - 1"	CPT	X	DS	SS	S	SURFACE	
JBT	6E1	HIGH RIGHT ENDZONE	HIGH RIGHT ENDZONE / BLIMP	BULLOCH	AV-RP	1" - 10"	1" - 10"	1" - 1"	CPT	SD	DS	SS	PM	PEDESTAL	1
JBT	6G1	AUX BOOTH 2 06.52.01	AUX BOOTH 2	BULLOCH	AV-RP	1" - 10"	1" - 10"	1" - 1"	CPT	X	DS	SS	S	SURFACE	
JBT	6G2	AUX BOOTH 1 06.53.01	AUX BOOTH 1	BULLOCH	AV-RP	1" - 10"	1" - 10"	1" - 1"	CPT	X	DS	SS	S	SURFACE	
JBT	6G3	HOME COACHES 06.55.02	HOME COACHES	BULLOCH	AV-RP	1" - 10"	1" - 10"	1" - 1"	CPT	SD	DS	SS	PM	PEDESTAL	1
JBT	6G4	HOME RADIO 06.56.01	HOME RADIO BOOTH	BULLOCH	AV-RP	1" - 10"	1" - 10"	1" - 1"	CPT	X	DS	SS	S	SURFACE	
JBT	6G5	NETWORK TV 06.56.02	TV ANNOUNCE BOOTH	BULLOCH	AV-RP	3" - 0"	1" - 10"	1" - 1"	CPT	X	DS	SS	S	SURFACE	
JBT	6H1	ALL 22 CAMERA 06.57.01	ALL 22	BULLOCH	AV-RP	1" - 10"	1" - 10"	1" - 1"	CPT	X	DS	SS	S	SURFACE	
JBT	6H2	VISITING RADIO 06.57.03	VISITING RADIO BOOTH	BULLOCH	AV-RP	1" - 10"	1" - 10"	1" - 1"	CPT	X	DS	SS	S	SURFACE	
JBT	6H3	VISITING COACHES 06.58.01	VISITING COACHES	BULLOCH	AV-RP	1" - 10"	1" - 10"	1" - 1"	CPT	SD	DS	SS	PM	PEDESTAL	1

IN-HOUSE PRODUCTION:

In addition to supporting the broadcast, these same systems provide infrastructure for your event's in-house video production and Protective Stadium including the ability to utilize up to five (5) HD cameras including one (1) wireless camera from the 600-level control room complete with switchers, graphic encoders, and wireless communications headsets.

Protective Stadium features a TriplePlay IP television system connecting 242 monitors throughout the stadium for broadcast, digital signage, menu boards, and in-house feeds.

VIDEO PRODUCTION SYSTEM TECHNICAL EQUIPMENT INFORMATION

CAMERAS: (MANNED WIRED HARD - QTY: 3) CAMERA BODY: SONY HXCFB80HL VIEWFINDER: SONY HDVFL750 VIEWFINDER HOOD: SONY VFH790 MICROPHONE: SONY ECM874/9X LENS: CANON HJ40EX14B IASE-V H LENS SERVO: CANON SEMI SERVO LENS FILTER: CANON UV/127 P0.75 TRIPOD - VINTEN VP250 CP2M RAIN GEAR: MTO S-10 OVERNIGHT COVER: MTO S7 (MANNED WIRED HANDHELD - QTY: 1) CAMERA BODY: SONY HXCFB80HL VIEWFINDER: SONY HDVFL10 MICROPHONE: SONY ECM874/9X LENS: CANON CJ24EX7.5B IRSE S LENS SERVO: MS210D LENS FILTER: TIFFEN 105CUVP TRIPOD - SACHTLER 2073S1 (MANNED WIRELESS HANDHELD - QTY: 1) CAMERA BODY: SONY HXCFB80HL VIEWFINDER: SONY HDVFL10 MICROPHONE: SONY ECM874/9X LENS: CANON HJ14EX4.3B IASE LENS SERVO: MS210D LENS FILTER: CANON UV/127 P0.75 TRIPOD - SACHTLER 2073S1 WIRELESS SYSTEM: WAVE CENTRAL BATTERIES: ANTON BAUER 8875-0097 (QTY: 8)	PTZ CAMERAS: (OUTDOOR RATED - QTY: 2) CAMERA: PANASONIC AW-HR140PJ8 LOCATIONS: PRESS BOX ROOF - SCOREBOARD CONFIDENCE TOP OF SCOREBOARD - BEAUTY (INDOOR RATED - QTY: 1) CAMERA: PANASONIC AW-HE130KPJ LOCATION: PRESS CONFERENCE ROOM PTZ CONTROLLER (QTY: 1) PANASONIC AW-RP150GJ5 PRODUCTION SWITCHER (QTY: 1) ROSS CARBONITE ULTRA 24 3GSDI Inputs, 14 3GSDI Outputs LICENSES: ME 2, MULTIVIEWER 2 & 4 PANEL: ROSS CARBONITE CB2 CHARACTER GENERATOR (QTY: 1) NEWBLUE FX TITLER LIVE COMPLETE SINGLE CHANNEL (1 KEY, 1 FILL) OUTPUTS VIA HDSDI SLOW MOTION & CLIPS (QTY: 1) NEWTEK 3PLAY 3P1 (4 INPUTS, 2 OUTPUTS) BLUE RAY DECK (QTY: 1) BLU-RAY - JVC SR-HD2700US	INTERCOM: WIRED PARTYLINE MASTER (QTY: 1) CLEARCOM ENCORE MS-704 4 CHANNEL USER STATION (QTY: 2) CLEARCOM RM-704 2 CHANNEL USER STATION (QTY: 2) CLEARCOM RS-702 WIRELESS INTERCOM BASE (QTY: 1) CLEARCOM FRESPEAK II BELTPACKS (QTY: 5) CLEARCOM FSII-BP19-X4 SPARE BATTERIES (QTY: 5) AUDIO: MIXER: YAMAHA TF-1 16 INPUTS / 16 OUTPUTS USE CASE: CONTROL ROOM SUB MIXES & SEND MIXES TO HOUSE PA SYSTEM MULTIWIWERS (QTY: 4) GENERATED VIA ROSS CARBONITE (2) ARE HARDWIRED TO TD MONITORS (2) ARE PATCHABLE CAMERA CONNECTIONS: IN-HOUSE PRODUCTION IS SMPTE FIBER. SEE BROADCAST SCHEDULE & MARKUPS FOR ADDITIONAL INFORMATION
--	---	---

STADIUM EQUIPMENT

ADDITIONAL EQUIPMENT:

In addition to fixed furniture, fixtures, and equipment in place throughout Protective Stadium, additional tables, chairs, tents, pipe and drape, and staging can be made available to support your event. Please develop a comprehensive list of your needs and your Event Manager can advise you on applicable pricing and availability for in-house options and provide local vendor recommendations for anything not on-site. Decorative/sitting furniture (couches) and drivable equipment such as forklifts and golf carts must be rented from an outside vendor. A standard set-up charge of \$750 shall be assessed to remove the existing game day furniture in the Stadium Club.

SET UP STAFF:

Stadium staff will set up all BJCC equipment rented for your event. If you require a same day reset in a particular space, an additional labor charge will be applied.

SPECIALTY EQUIPMENT:

Specialty equipment in-house at Protective Stadium includes 70,000 sq. ft. of Signature Systems Armor Deck 2. Total field is 107,870 sq. ft.

LAUNDRY FACILITIES:

Laundry facilities are not available on-site, and all towel/linen services must be provided off-site by an outside vendor.



ARMOR DECKING

POLICIES & GUIDELINES

Protective Stadium, as a facility within the Birmingham-Jefferson Convention Complex (BJCC) is owned and managed by the Birmingham-Jefferson Civic Center Authority.

While your Event Manager is available to clarify any specific policies and guidelines, some of our most referenced policies are listed below.

EVENT STAFFING:

The BJCC strives to maintain a friendly and safe environment for its guests. To achieve this level of service, minimum staffing levels are required for both ticketed and non-ticketed events that will be contracted for and supervised by the BJCC. Your Event Manager will work with you to determine the appropriate crowd management staffing model required to conduct a safe and secure event by evaluating event attendance, nature of event, show and venue history. Best Crowd Management is the exclusive provider of crowd management personnel. Fees for staffing are to be considered an event expense and the responsibility of the licensee.

PRODUCTION LABOR:

Licensee, working in coordination and direction of the BJCC, must use labor provided by International Alliance of Theatrical Stage Employees (IATSE) Local 78 for show-related rigging and production needs.

SIGNAGE:

Banners and signs are welcome in our facilities, upon advanced approval from the BJCC. This includes, but is not limited to, exterior, interior, wayfinding, and entrance signage. Permanent facility signs and directional graphics may not be blocked. Signs must be placed on easels and not taped, tacked, or adhered to any other surface. Signage in the common spaces of the BJCC must be professionally printed or computer generated - no hand-written signs are permitted. Signs may not be placed in any complex elevator. Any damage by adhesive materials on floors, walls, or any BJCC property will incur charges. After an event, all posted signage must be removed, or a removal charge will be incurred.

SPONSORSHIPS:

All sponsorships including signage, giveaways and other promotional items displayed or handed out on Protective Stadium property must be coordinated with your Event Manager. Due to some building exclusivities, certain sponsors may be precluded from displays inside the stadium and on building property. Please contact your Event Manager for the most up-to-date list of Protective Stadium protected advertisers and partnerships to include such brands at Protective Life (insurance category exclusive) and Coca-Cola (soft drink and non-alcoholic beverage exclusive pouring rights).

FOOD & BEVERAGE:

All food and beverage to be consumed within Protective Stadium including catering, concessions, and alcohol service must be coordinated through the BJCC's exclusive partner, Sodexo Live!. Sodexo Live!, as the alcoholic beverage license holder, must enforce all applicable laws and codes in association with the sale and consumption of alcoholic beverages. During activities serving alcoholic beverages, uniformed law enforcement officers, at the expense of licensee, must be on-site. Permission to distribute or dispense, without charge, samples of food, beverages, refreshments, sundries related to an event, etc. shall be arranged in advance and be clearly stated and identified as "further terms and conditions" to the License Agreement.

PYROTECHNICS:

All pyrotechnics displays must be approved by the BJCC and then permitted through Birmingham Fire and Rescue and State of Alabama as required. Birmingham Fire and Rescue's Fire Marshall division can be reached at (205) 250-7540 for any questions regarding the permitting processes, licenses, and fees required. As a general rule, BFRS will not issue permits for any large-scale pyrotechnic displays North of Protective Stadium on 12th Avenue or surrounding streets due to amount of traffic in the area for the Stadium's first aid activities as well as patrons' safety exiting the Stadium from the Northwest and Northeast gates. Protective Stadium and Birmingham Fire and Rescue Service have the authority to suspend or terminate firework displays at any time upon at their discretion.

CONFETTI:

With advanced review and approval from the BJCC including the Director of Stadium Operations, confetti may be used. Confetti should be made from a water-soluble paper source and be a minimum of 1" x 1" in size. Absolutely no mylar material or glitter shall be used in any confetti display. A minimum clean-up charge shall be assessed for the use of confetti, and if conditions (ex. wind) create additional housekeeping issues that charge may increase. Confetti may not be permitted if another event requires use of the field the next day after your event.

DRONES:

Subject to advance review and approval from the BJCC along with proper notification and approval from the FAA, aerial drones can be utilized at events held at Protective Stadium. Please consult the Federal Aviation Administration's (FAA) resources related to the operation of Unmanned Aircraft Systems (UAS) at the following link: <https://www.faa.gov/uas> and note that Protective Stadium's capacity of more than 30,000 creates specific temporary flight restrictions for certain events.

PROTECTIVE STADIUM

MEETING SPACES



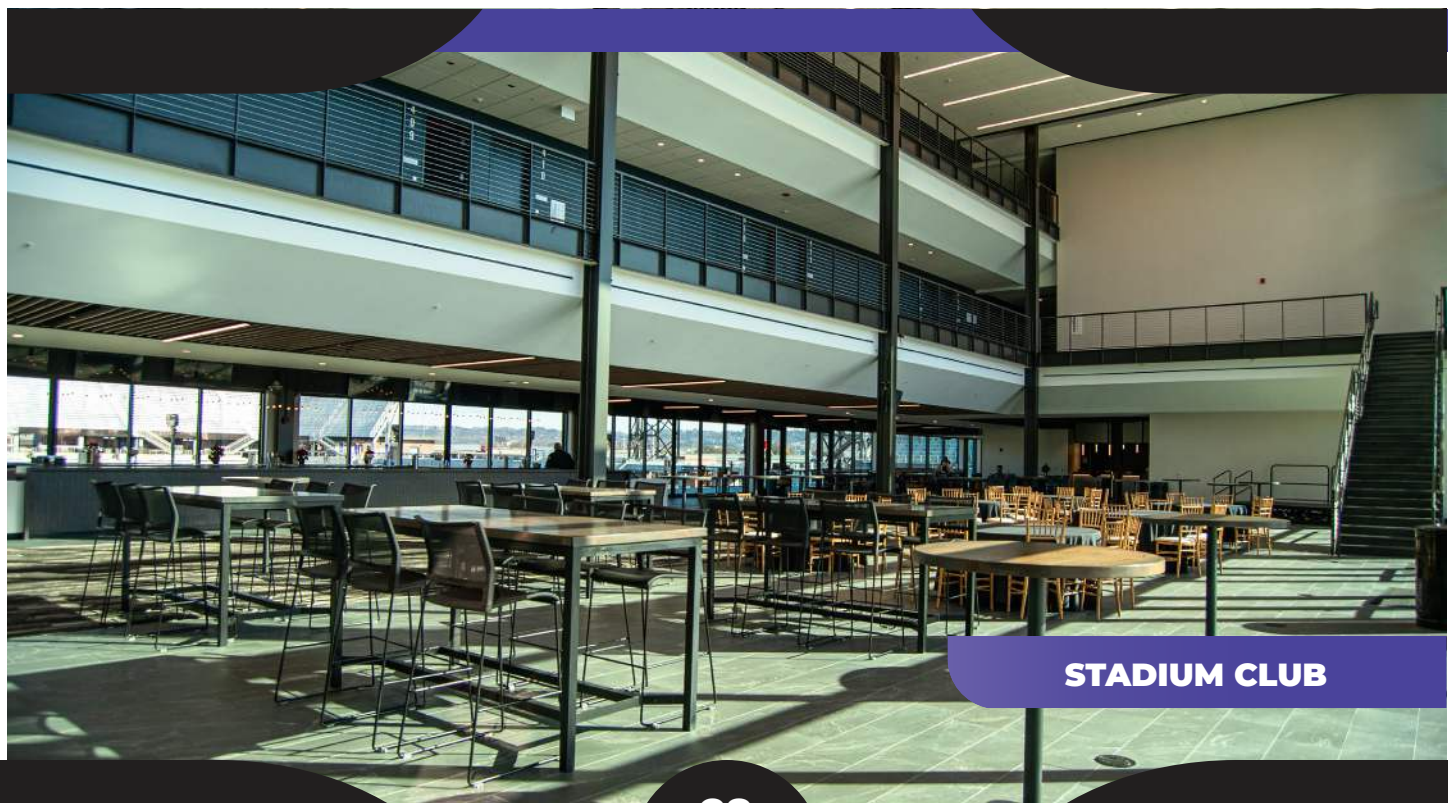
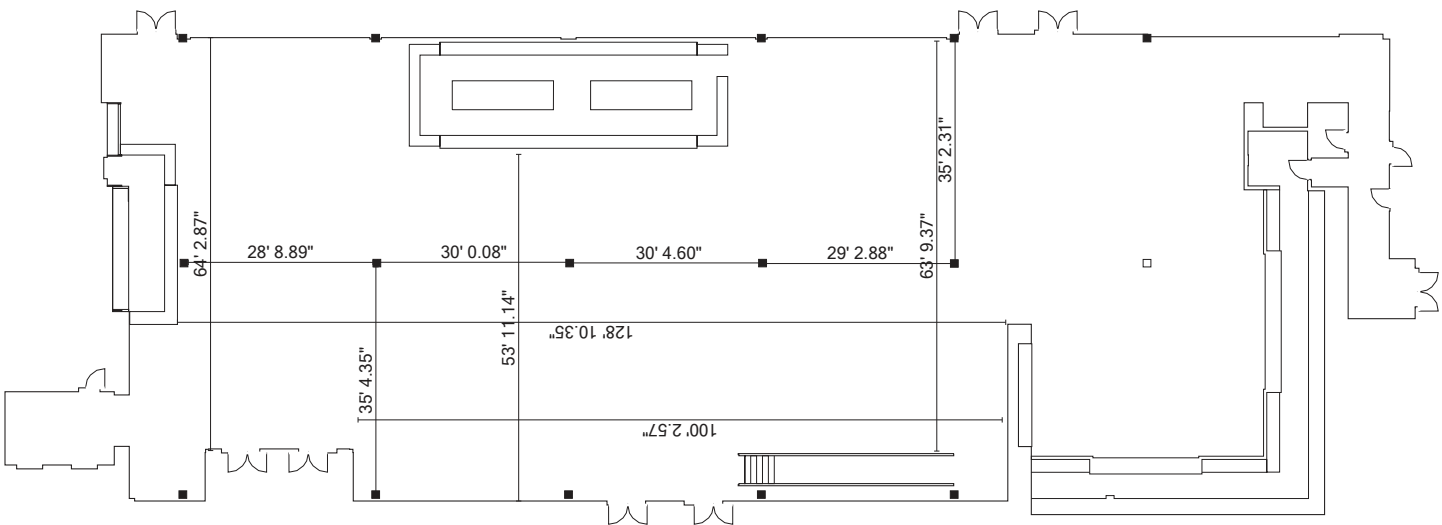
STADIUM CLUB

MEETING SPACES

In addition to hosting large scale events utilizing the field and seating areas, Protective Stadium is proud to offer two (2) spaces for private event and meeting rentals including the Stadium Club Hospitality Area and the Recruiting Room.

STADIUM CLUB:

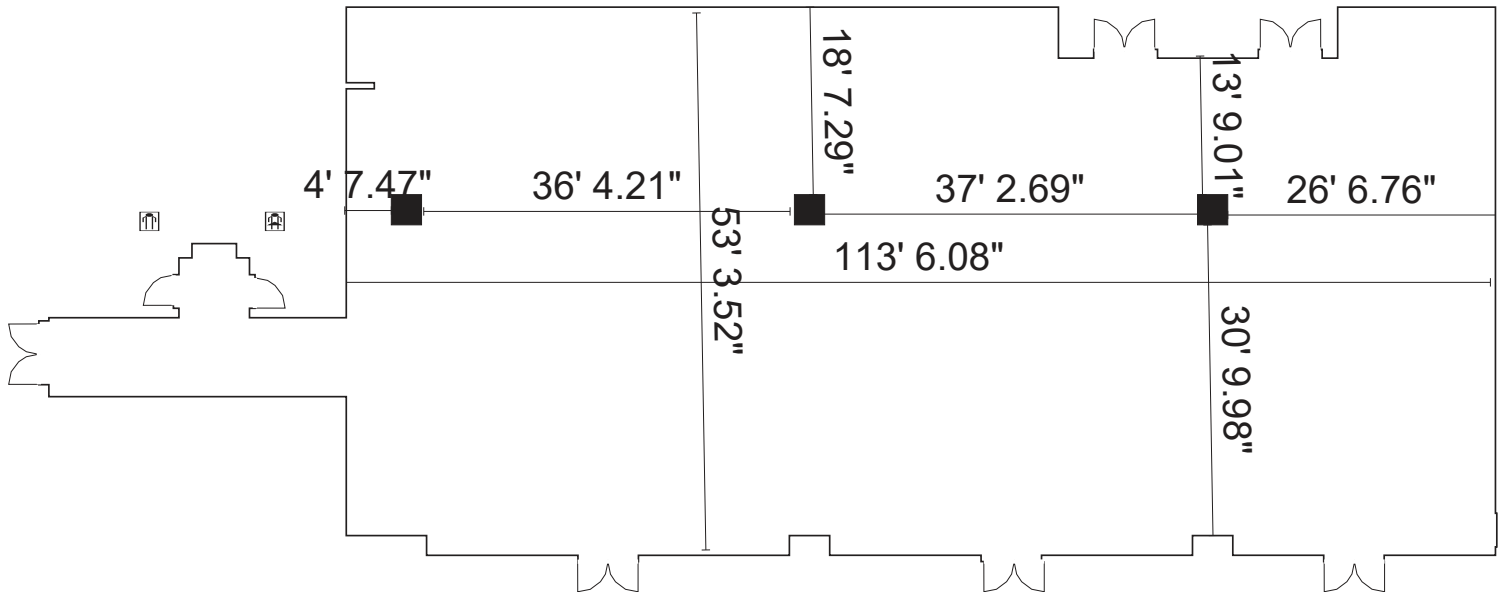
The Stadium Club includes 11,569 sq. ft. of meeting and entertainment space with field view designed best for larger reception style events including two bars, built-in reception style furniture, and a nearly 900 sq. ft. modern buffet area for food and beverage service. The space can be configured to meet a variety of needs including sit down dinners, press conferences, and educational workshops and is guaranteed to give your guests unique views that cannot be achieved in a traditional event space.



STADIUM CLUB

RECRUITING ROOM:

The Recruiting Room is an ideal option for smaller group meetings or presentations. The room is equipped with three (3) mounted 75" TVs that can be integrated seamlessly into a presentation. The room provides 6,442 square feet of meeting and entertainment space.



POLICIES & GUIDELINES:

Protective Stadium, as a facility within the Birmingham-Jefferson Convention Complex (BJCC) is owned and managed by the Birmingham-Jefferson Civic Center Authority.

While your Event Manager is available to clarify any specific policies and guidelines, some of our most referenced policies are listed below.

RENTAL BASICS:

Daily use of BJCC facilities is considered to be a continuous 11-hour period which begins no earlier than 6 a.m. and ends no later than 11:59 p.m. the same day. Please make note that additional charges will be incurred for events exceeding the contracted rental period and between 12 a.m. and 6 a.m. Charges may be made for tables, chairs, staging setups and electrical/utility services and additions or arrangements of the building's sound systems. Rentals include normal heating or air conditioning during event days, excluding move-in or move-out. Normal housekeeping services are provided with some exclusions.

FOOD & BEVERAGE:

All food and beverage to be consumed within Protective Stadium including catering, concessions, and alcohol service must be coordinated through the BJCC's exclusive partner, Sodexo Live!. Sodexo Live!, as the alcoholic beverage license holder, must enforce all applicable laws and codes in association with the sale and consumption of alcoholic beverages. During activities serving alcoholic beverages, uniformed law enforcement officers, at the expense of licensee, must be on-site.

SIGNAGE:

Banners and signs are welcome in our facilities, upon advanced approval from the BJCC. This includes, but is not limited to, exterior, interior, wayfinding, and entrance signage. Permanent facility signs and directional graphics may not be blocked. Signs must be placed on easels and not taped, tacked, or adhered to any other surface. Signage in the common spaces of the BJCC must be professionally printed or computer generated - no hand-written signs are permitted. Signs may not be placed in any complex elevator. Any damage by adhesive materials on floors, walls, or any BJCC property will incur charges. After an event, all posted signage must be removed, or a removal charge will be incurred.

PARKING:

A true downtown and urban venue, Protective Stadium parking is a mix of BJCC owned parking areas and facilities as well as local partners used to supplement major crowds. Please consult with your Event Manager and the Director of Operations early in your planning process to account for standard guest parking as well as oversized vehicles (trucks, buses, RVs, etc.) parking, shuttle services, and traffic modifications or road closures as may be necessitated by the size of your event.

VENUE EQUIPMENT:

In addition to fixed furniture, fixtures, and equipment in place throughout Protective Stadium, additional tables, chairs, tents, pipe and drape, and staging can be made available to support your event. Please develop a comprehensive list of your needs and your Event Manager can advise you on applicable pricing and availability for in-house options and provide local vendor recommendations for anything not on-site. Decorative/sitting furniture (couches) and drivable equipment such as forklifts and golf carts must be rented from an outside vendor. A standard set-up charge of \$750 shall be assessed to remove the existing game day furniture in the Stadium Club.

AUDIO & VISUAL:

Encore AV is the BJCC's preferred A/V vendor and is located on site at the BJCC. Your Event Manager can arrange communications between you and Encore AV to determine the appropriate needs of the event, or you may choose to select another outside vendor. The Stadium Club and the Recruiting Room have limited built in A/V capabilities, and your event manager can discuss options for staffing and costs associated with those elements.

A highlight for many private events is the utilization of the full HD Daktronics video boards including a main 140ft W x 30ft H video board in the South end zone and ribbon boards (11) on the East fascia between 100 level and 200 level seating for private event messaging and branding as well as the TriplePlay IP television system monitors throughout the complex. All content must be formatted to specifications and provided no later than 48 hours prior to the event.

ABOUT THE BJCC

Located in the heart of the Uptown Entertainment District, the Birmingham Jefferson Convention Complex is more than just a venue for conventions and trade shows, it is a magnet for the local community, too. As one of the city's premier gathering places, it is where Best in Class sporting events, concerts, Broadway shows, local meetings, galas, educational seminars, cultural, religious, and social events take place on a daily basis.

On the BJCC campus, you will find everything you need for your event, starting with an array of top-notch facilities, 791 guest rooms in our Westin Birmingham and Sheraton Birmingham Hotels, convenient dining and entertainment as well as helpful event staff and a host of specialized services. The complex offers over 420,000 sq. ft. of flexible meeting space, 88 breakouts and 18 unique venues all in one walkable location.

2100 Richard Arrington Junior Blvd. N
Birmingham, AL 35203

Visit the BJCC's website for more information by clicking [here](#).



EAST EXHIBITION HALL

92,234 sq. ft. Exhibition Space
22 Meeting Rooms
Largest Room 14,193 sq. ft.
1850 Capacity

NORTH EXHIBITION HALL

94,269 sq. ft. Exhibition Space
11 Meeting Rooms
Largest Room 9,574 sq. ft.
432 Capacity

SOUTH EXHIBITION HALL

21,182 sq. ft. Exhibition Space
10 Meeting Rooms
Largest Room 14,530 sq. ft.
1440 Capacity

THE FORUM CONFERENCE CENTER

3,750 sq. ft. Theater
12 Meeting Rooms
Largest Room 7,280 sq. ft.
480 Capacity

BJCC CONCERT HALL

2,835 Capacity
2 chorus rooms and 12 dressing rooms as well as 2 rehearsal areas and a VIP Reception Room.

BJCC THEATRE

1000 Capacity
2 rehearsal areas, 7 dressing rooms total, including 2 chorus rooms, 2 star dressing rooms, and 3 other dressing rooms.

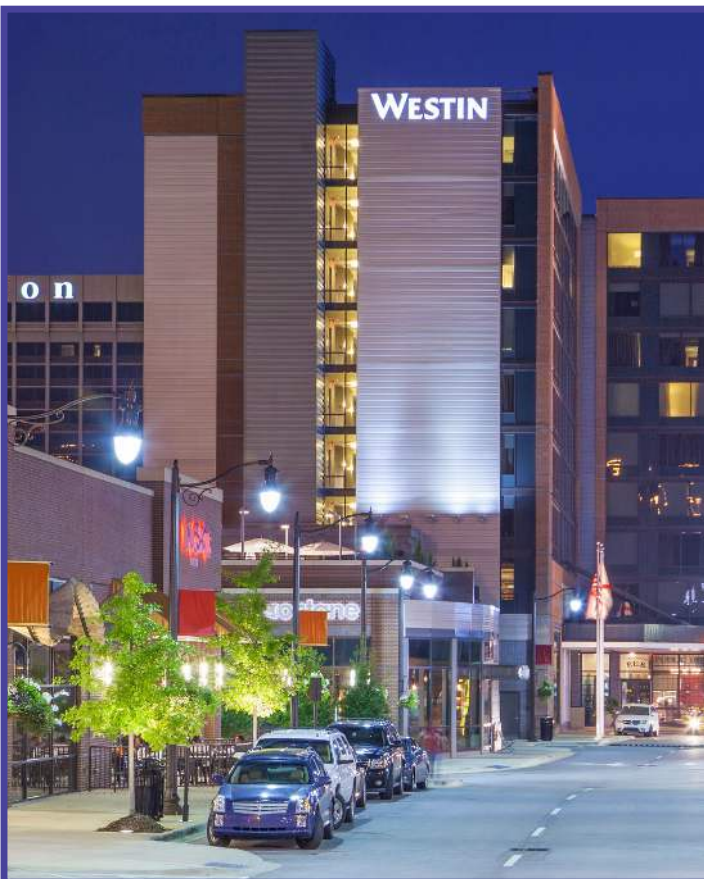


SHERATON BIRMINGHAM HOTEL

2100 Richard Arrington Jr. Blvd. N
Birmingham, AL 25203

Sheraton Birmingham Hotel is a luxurious property with modern amenities and spacious, newly renovated guest rooms. Showcasing nearly 43,000 sq. ft. of event space, a total of 20 function rooms are available for private rental.

Visit the Sheraton's website for more information by clicking [here](#).



THE WESTIN BIRMINGHAM

2212 Richard Arrington Jr. Blvd. N
Birmingham, AL 35203

The Westin Birmingham is a AAA 4-Diamond approved hotel. Offering 294 contemporary and stylish sleeping rooms, the Westin can accommodate up to 340 meeting attendees in a theater configuration. State-of-the-art technology and high-speed internet access is available in all meeting rooms.

Visit the Westin's website for more information by clicking [here](#)



LEGACY ARENA

1898 9th Ave. N.
Birmingham, AL 35203

The newly modernized 18,000-capacity arena stands ten-stories high and hosts national and international touring concerts, productions, and a variety of sporting events each year. The arena has a curtaining system that allows the space to scale to a 6,200-capacity theater, and is available for private events of all types.



CITY WALK BHAM

Covering 31 acres and 10 city blocks, City Walk offers 10 unique outdoor spaces that will accommodate almost any type of event. The venue includes recreational sports facilities, an amphitheater and classroom and a variety of open flexible spaces. City Walk BHAM is an ideal outdoor venue for kick off and closing parties, receptions, team building or other corporate gatherings.

Visit City Walk BHAM website for more information by clicking [here](#).